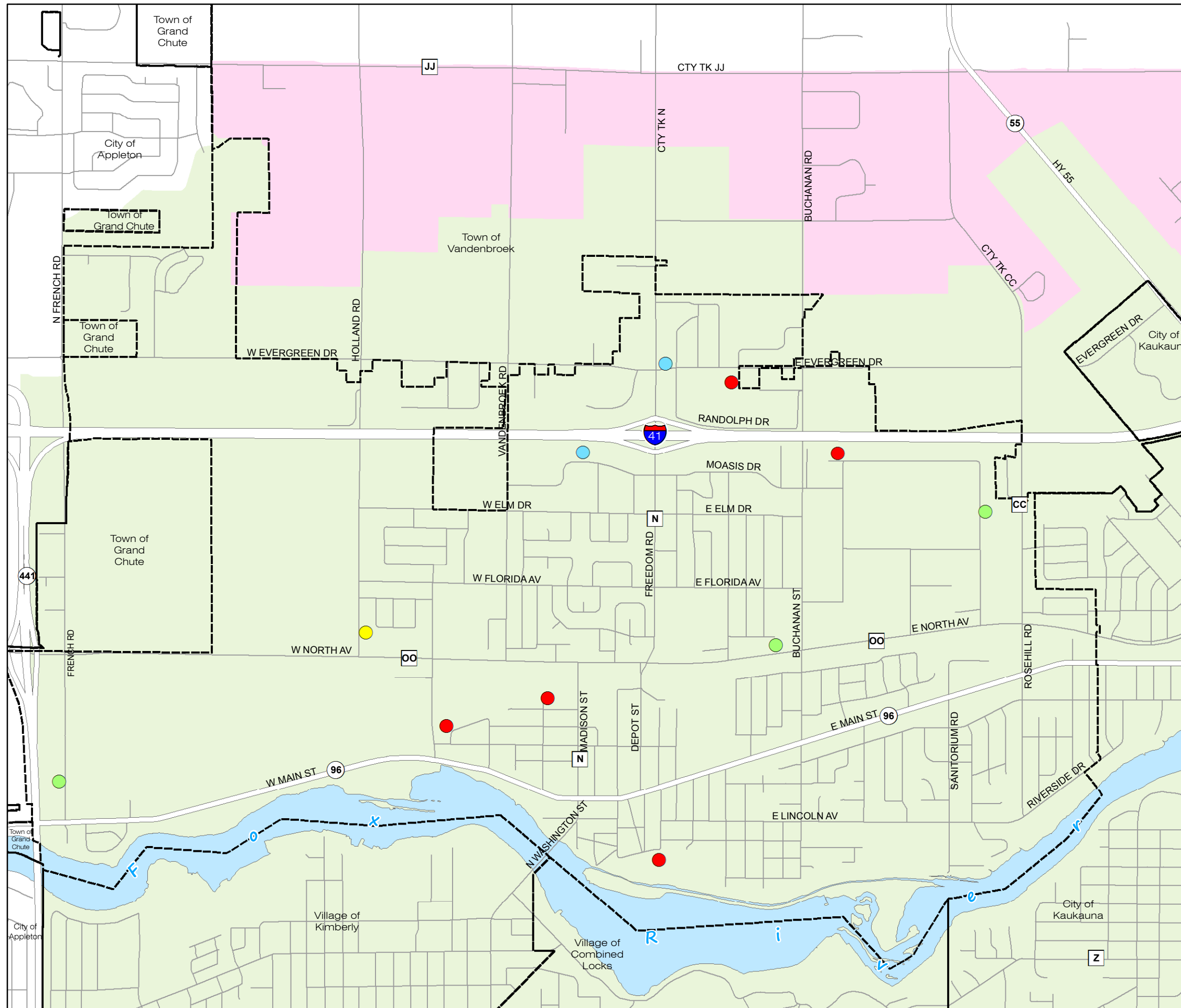


MAP 7

Utilities & Sewer Service Area

Village of Little Chute
Comprehensive Plan

-  Broadcasting/Telecommunications
-  Electric Utilities
-  Natural Gas
-  Water Utilities
-  Sewer Service Area 2030
-  Sewer Service Area 2050
-  Municipal Boundary



Sources: Outagamie County, Village of Little Chute and East Central Regional Planning Commission. April 2016.

