

Village of

Little Chute

AGENDA

LITTLE CHUTE VILLAGE BOARD COMMITTEE OF THE WHOLE MEETING

PLACE: Little Chute Village Hall

DATE: Wednesday, December 14, 2016

TIME: 6:00 p.m.

- A. Call to Order
- B. Roll Call
- C. Public Appearance for Items Not on the Agenda

- 1. Approval of Minutes
Minutes of the Regular Board Meeting of December 7, 2016
- 2. Discussion—Event Parking on Gardenia Drive
- 4. Presentation/Discussion—Quiet Zones
- 5. Discussion—Municipal Services Building
- 6. Discussion—Mill Street Bridge Update
- 7. Unfinished Business
- 8. Items for Future Agendas
- 9. Closed Session:
19.85(1)(c) Consideration of Employment, Promotion, or Performance Evaluation Data of any Public Employee of the Village of Little Chute. *Personnel Evaluations*
- 10. Return to Open Session
- 11. Adjournment

Requests from persons with disabilities who need assistance to participate in this meeting or hearing should be made with as much advance notice as possible to the Clerk's Office at 108 West Main Street, (920) 423-3852 or email laurie@littlechutewi.org.

Prepared: December 9, 2016

MINUTES OF THE REGULAR BOARD MEETING OF DECEMBER 7, 2016

Call to Order: President Vanden Berg called the Regular Board Meeting to Order at 6:00 p.m.

Pledge Allegiance to the Flag

President Vanden Berg led members in the reciting of the Pledge of Allegiance.

Roll call of Trustees

PRESENT: Michael Vanden Berg, President
Larry Van Lankvelt, Trustee
John Elrick, Trustee
David Peterson, Trustee
James Hietpas, Trustee
Bill Peerenboom, Trustee
Skip Smith, Trustee

Roll call of Officers and Department Heads

PRESENT: James Fenlon, Village Administrator
Jim Moes, Community Development Director
Laurie Decker, Village Clerk
Teri Matheny, Finance Director
Adam Breest, Director of Parks, Recreation and Forestry
Jeff Elrick, Public Works Director
Erik Misselt, Fox Valley Metro Police Department Police Chief
Charles Koehler, Village Attorney
Jerry Verstegen, MCO
Interested Citizens
EXCUSED: Angela Schneider, Interim Library Director

Public Appearance for Items Not on the Agenda

None

Other Informational Items

November Fire and FVMPD Monthly Reports and October Report

Approval of Minutes

Minutes of the Committee of the Whole Meeting of November 30, 2016

Moved by Trustee Smith, seconded by Trustee Peterson to Approve the Minutes of the Committee of the Whole Meeting of November 30, 2016

Ayes 7, Nays 0 – Motion Carried

Department and Officers Progress Reports

Departments and Officers provided progress reports to the Board.

Operator License Approvals

Brietzke, Kateline	The Ladderhouse	Menasha
Smith, Shelly	Jacks or Better	Kaukauna

Moved by Trustee Van Lankvelt, seconded by Trustee Elrick to Approve the Operator Licenses as presented

Ayes 7, Nays 0 – Motion Carried

Discussion—Scannell Site Plan Approval

Administrator Fenlon noted that the berm height, fence selection, and protective screening around

mechanical structures are the items that the Board needs to approve for the Scannell Site Plan. Director Moes stated that the fence will be 6 feet high with barbed wire on top and the color will come to the Board for review. He also noted that a water tank is required for fire protection. Trustee Elrick would like the water tank to be screened. Scannell Properties will come in one more time to go over these last details.

Action—Well #1 Contract Award

Administrator Fenlon noted that the Utility Commission recommends approval of the Well #1 contract. Jerry Verstegen went over the seven alternative bids and the reasons to move forward with the plan as presented. The low bidder is August Winter & Sons, Inc. with a base bid of \$839,175. Another cost associated with this project is the Agreement of Professional Services from McMahon.

Moved by Trustee Elrick, seconded by Trustee Van Lankvelt to Award the Well #1 Contract to August Winter & Sons, Inc. and for the Total Cost of the Project not to exceed \$1,140,000

Ayes 7, Nays 0 – Motion Carried

Resolutions:

Adopt Resolution No. 49, Series 2016 Amend the Storm Water Utility ERU Rate

Moved by Trustee Van Lankvelt, seconded by Trustee Peerenboom to Adopt Resolution No. 49, Series 2016 Amend the Storm Water Utility ERU Rate to \$8.25

Ayes 7, Nays 0 – Motion Carried

Adopt Resolution No. 50, Series 2016 Committing Funds for Specific Purposes

Moved by Trustee Elrick, seconded by Trustee Smith to Adopt Resolution No. 50, Series 2016 Committing Funds for Specific Purposes

Ayes 7, Nays 0 – Motion Carried

Disbursement List

Moved by Trustee Peerenboom, seconded by Trustee Elrick to Approve Disbursement List and Authorize the Finance Director to pay all vendors

Ayes 7, Nays 0 – Motion Carried

Call for Unfinished Business

There was a question to Director Elrick regarding the Public Works building having the correct width for the beams.

Items for Future Agendas

None

Adjournment

Moved by Trustee Elrick, seconded by Trustee Smith to Adjourn the Regular Board Meeting at 7:02 p.m.

Ayes 7, Nays 0 - Motion Carried

VILLAGE OF LITTLE CHUTE

By: _____

Michael R. Vanden Berg, Village President

Attest: _____

Laurie Decker, Village Clerk

Village of Little Chute
REQUEST FOR VILLAGE BOARD CONSIDERATION

ITEM DESCRIPTION: Event Parking on Gardenia Drive

PREPARED BY: James P. Fenlon, Administrator

REPORT DATE: December 8, 2016

ADMINISTRATOR'S REVIEW/COMMENTS: (See Below)

EXPLANATION: In September of 2016, the Village Board was approached by a resident with concerns about parking on Gardenia Drive when an event is taking place at Scheels USA Sports Complex. The primary issue at hand is that during certain events, organizers charge a fee for parking. This issue forces people to make market decisions with regards to parking and for those looking for a creative, cheaper alternative, the parking on Gardenia Drive is an economical alternative.

This issue creates concerns for residents in that it creates issues with access to their driveways and safety hazards while events are underway. Additionally, the resident that brought this matter forward also raised the question from a public safety issue, namely is a piece of safety equipment needed to navigate the road, mobility would be diminished with two lanes of parking in play.

Staff at FVMPD did research this matter from the standpoint of information provided by the resident of what another community has done. An overview of that effort is attached in email form to this memo. Additionally, photos taken in that area during an event are included in this file (thanks to Trustee Peerenboom). Lastly, an aerial showing lot lines is attached to assist with orientation.

Village staff discussed this matter and have noted the following primary concerns or recommended alternatives:

- When an event is occurring at the Sports Complex and parking, the primary matter the Village should be concerned about is emergency/public safety ability to navigate the area and have the ability to respond in a timely and safe manner.
- Pedestrian and resident safety in navigating the roadways when parking is utilized on both sides of the roadway
- Creating permit parking or event parking restrictions, whether permanent or deployable, create enforcement and workforce concerns
- At some point, Gardenia and Tulip will be reconstructed with concrete streets and sidewalks, but not for at least another 18 years.
- The most effective solution to address the primary concern of public safety would be to restrict parking on the south side of Gardenia Drive for the 2017 sports season.

One other point to illustrate, the complex is actually owned by the City of Appleton and then leased to United Sports Association for Youth (nonprofit) through 2026. Staff discussed that if the nonprofit or city agreed to not charge for parking, which we have not explored but would likely seem as the driver for attendees to look for alternative parking solutions, you do not solve the matter of Gardenia being used as overflow for the extremely large tournaments that the complex hosts.

RECOMMENDATION: Discuss the items identified above and provide staff direction in moving forward on improving the situation on Gardenia Drive

James Fenlon

From: Scott Lund <Scott.Lund@fvmpd.org>
Sent: Friday, September 30, 2016 7:59 AM
To: Erik Misselt; James Fenlon
Cc: Michael Lambie
Subject: Parking on Gardenia

Erik and James,

After the September 21, 2016 Little Chute Board Meeting I asked Officer Mike Lambie to research the special event parking sign brought up by Vicky Kraus. I provided Officer Lambie with all the pictures and handouts Vicky gave me. Here is a summary of the information Officer Lambie collected.

The jurisdiction of the Polo Grounds Soccer complex falls within the jurisdiction of the Will County Sherriff's Department. Officer Lambie spoke with a Sergeant in their patrol division who stated the complex hosts 2-3 large tournaments a year. The Will County Sheriff's Department has Auxiliary Officers (staff without arrest/citation powers) handle all of the issues/traffic control around the complex during these events. The Sergeant told Officer Lambie that he was not familiar with any of his Patrol Officers addressing any parking issues in that area. The Sergeant agreed that there would be enforcement issues with the sign, as there is no documentation when the sign was put out and when cars began parking on the street. The Sergeant encouraged Officer Lambie to contact the Will County Zoning Department and the Wheatland Township Highway Department as they are listed on the sign.

Officer Lambie contacted the Will County Zoning Department and they stated they didn't have anything to do with the creation or placement of the sign. Officer Lambie was told they were familiar with area and the sign, but stated they had nothing to do with the enforcement of the sign. Officer Lambie said the township did sometimes request "Special Event" no parking for the surrounding streets during these soccer tournaments. The Wheatland Highway Department said their staff does not do any enforcement of the sign. The Wheatland Highway Department was not sure who was responsible for setting up or taking down the sign.

Officer Lambie was not able to get any information on the scope or depth of a past or present parking problem around the Polo Grounds Soccer complex. From Officer Lambie's research we can't conclude how this sign originated, is there a supporting municipal ordinance, and ultimately who is responsible for placement of the sign. It is apparent to me this is not an official sign, maintained or enforced by a municipality. This sign, as currently used, is a visual deterrent only.

Going forward I believe we have the following options:

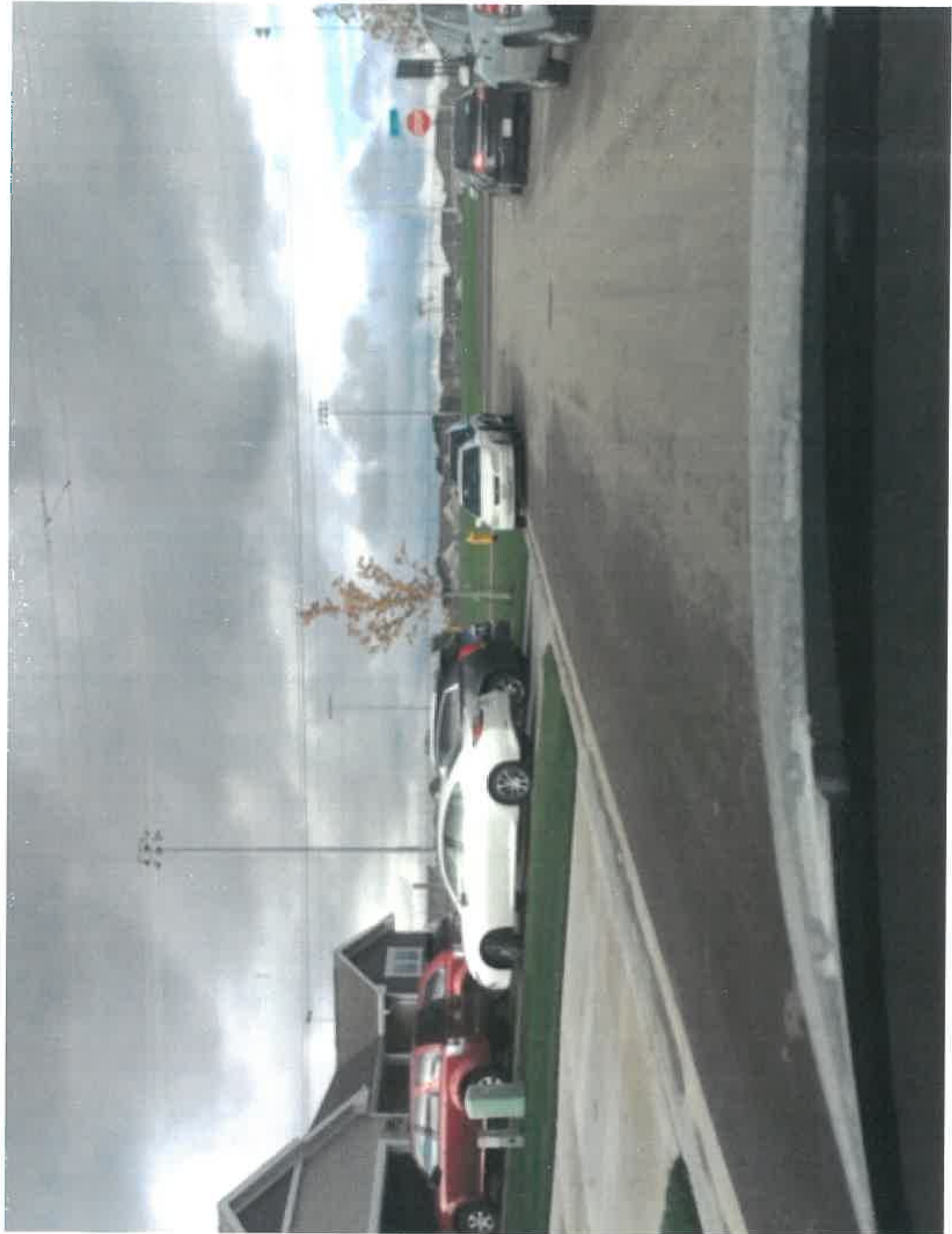
- Do nothing and maintain the status quo
- Ask the VCR's to conduct a traffic and/or parking study during tournament weekends to get a scope of the problem. With this information we could work with the residents on a solution
- Allow the residents on Gardenia to create a sign similar to the one Vicky Kraus showed the Village Board
 - If this is an option, I propose we mandate the size of the sign, the color of the sign, the size and color of the lettering and the language on the sign
 - This would be a visual deterrent only and not actively enforced
 - The sign would be the responsibility of the residents to put out, take down and maintain
- Post one side of the street no parking
 - Year round no parking
 - No permits for residents, etc.

If there are other options or ideas for this area, please let me know. Once an initial plan is made we will communicate with Vicky.

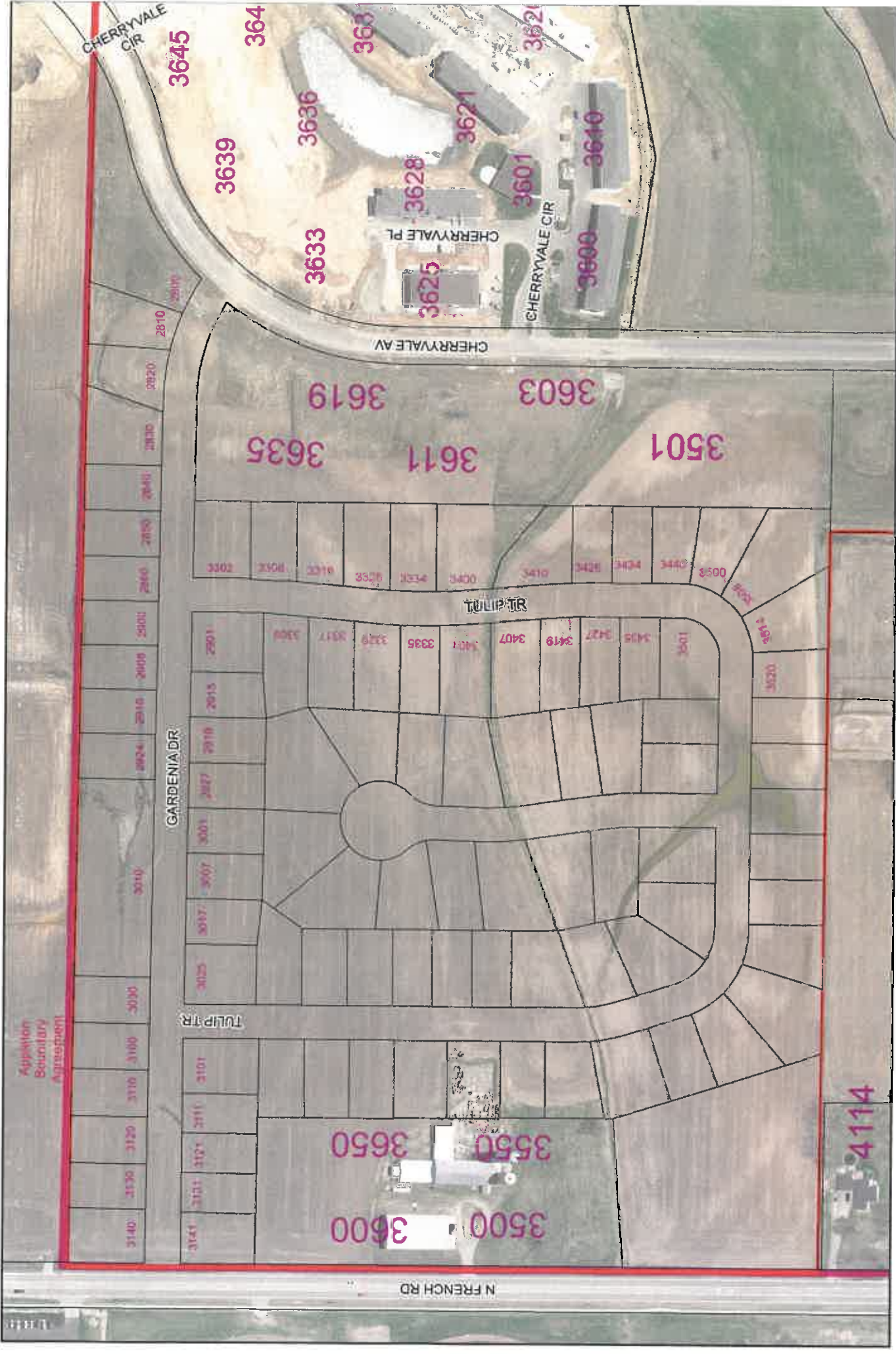
Scott Lund
Captain
Fox Valley Metro Police Department
200 W. McKinley Avenue
Little Chute, WI 54140
920-788-7505
920-788-7385FAX


www.fvmpd.org

This message and attachments are covered by the Electronic Communications Privacy Act, 18 U.S.C. 2510-2521, and contain information intended for the specified individual(s) only. This information is confidential. If the reader of this message is not the intended recipient, or an employee or agent responsible for delivering this message to the intended recipient, you are hereby notified that any dissemination, distribution or copying of this communication is strictly prohibited. If you have received this communication in error, please notify me immediately by replying to the message and deleting it from your computer. Thank You.











Village
of
Little Chute



N



0 140 280 560 840 1,120 1,400 1,680 Feet

Not a survey 1 inch = 222 feet

REQUEST FOR BOARD'S CONSIDERATION

ITEM DESCRIPTION:	Overhead Crane
REPORT PREPARED BY:	Jeff Elrick
REPORT DATE:	December 14, 2016
ADMINISTRATOR'S REVIEW / COMMENTS:	
No additional comments to this report:	<u>JEP</u>
See additional comments attached:	<u></u>
EXPLANATION:	
The new Municipal Building design there is an overhead crane option located in the mechanics area. The overhead crane was pulled out of the original bids and the Village was going to get quotes for future installation, but where and how the crane rails are attached to the building along with electrical for the crane will be installed in the building project. This is being done so if or when the crane is installed, the building will not have to revamp to accommodate the crane.	
The architect needs the crane configuration drawing for design so there are no conflicts with surrounding items.	
This doesn't mean a crane needs to be purchased at this time but it will help for the design purpose. When the time comes and a decision on which crane to purchase there might be some minor changes needed then.	
On the other hand if the board decides to purchase a crane now there should be no changes needed.	
Attached are two quotes the Village has received for an overhead crane.	
RECOMMENDATION:	
Discussion	



Kinetic Equipment, Inc.
 2146 W. Pershing St.
 Appleton, WI 54914
 PH 920-739-7438 FX 920-739-0826
 WWW.ALL-LIFTSYSTEMS.COM

Proud Distributor of Demag Cranes and Components

12012016A

Quote Number

Date	December 1, 2016		
Reference	Little Chute Municipal Bldg. 5 Ton Bridge Crane		
Company	Village of Little Chute		
Attn.	Jeff Elrick		
Address	1940 Buchanan St.		
City	Little Chute		
State	WI	Zip	54140
Office PH			
Cell Phone	423-3866		
E-mail			

Quote Prepared By

Kinetic Equipment, Inc.
 Mike Schwab, Territory Sales and Service
 Direct Cell: 920-378-5147
 E-Mail: mschwab@all-liftsystems.com

<u>Item</u>	<u>Qty.</u>	<u>Description</u>
1	1	Bridge Cranes and Hoists CRANE TYPE: Top Running Single Girder Crane. These rugged cranes, with wide flange beam girder construction, are designed for a minimum class "C" service. Model DMR 5t 10-15M TOP MT Capacity: 5.00 T Span: 37'- 5.50" Voltage: 460/3/60 Lift: 25'-8" Hoist/Trolley: EKDMR5-5-H20/10-4/1-Z-V1.2/7.2-CC (See Bridge Crane Specifications and Features Attachment). Price Includes incoming freight.
2	1	Runway Conductor-Bar Electrification Package The system is to be a runway application having 4 conductors each 115 ft long. The power feed for this system is to be located at the end. The total number of hangers is based on a spacing of 59 in. For voltage drop calculation the distance between conductors as determined by the hanger and/or bracket is 1.62 in. The bar system is supplied by 460 V at the power feed and draws a maximum of 9.64 amps between 1 vehicles(s). This system will be exposed to temperatures ranging from 0 °F to 110 °F. Based on this information and the conductor bar selection the bar system will have a maximum approximate voltage drop of 0.39% at 110 °F. RADIO CONTROL - MAGNETEK FLEX-6EX HANDHELD RADIO SYSTEM WITH TWO TRANSMITTERS, WITH SIGNAL HORN
3	1	Runway Rail Package 2 runs new 40# ASCE Rail 115'-0" each, 230'-0" total. Complete with necessary splice bars w/hardware, 234 each ¾" dia. Hook bolts for 40# rail Rail punched standard for ¾" dia. hook bolts. Hook bolts to fit contractor determined size beam or channel. All plain steel finish. 4 each 40# fixed bump stops.



Kinetic Equipment, Inc.
 2146 W. Pershing St.
 Appleton, WI 54914
 PH 920-739-7438 FX 920-739-0826
 WWW.ALL-LIFTSYSTEMS.COM

Proud Distributor of Demag Cranes and Components

12012016A

Quote Number

Date	December 1, 2016		
Reference	Little Chute Municipal Bldg 5 Ton Bridge Crane)		
Company	Village of Little Chute		
Attn.	Jeff Elrick		
Address	1940 Buchanan St.		
City	Little Chute		
State	WI	Zip	54140
Office PH	(920) 423-3866		
Cell Phone			
E-mail			

Quote Prepared By

Kinetic Equipment, Inc.
 Mike Schwab, Territory Sales and Service
 Direct Cell: 920-378-5147
 E-Mail: mschwab@all-liftsystems.com

4	1	Installation Install (1) Complete Runway Rail Only, Runway Electrical Conductor Bar, and Bridge Crane. Crane Runway installation by others. Site must be free and clear of obstructions and on an open level ground for assembly and installation. Concrete surface required for the ass'y. and installing the cranes.
5	1	Load Test Test Bridge Crane to 125% of Rated 5 Ton Load Capacity per OSHA 1910.179 5 Ton (10,000 Lbs.) Capacity Bridge Crane will be tested to 12,500 Lbs.
6		Electrical Power-up Power-up of the Bridge Crane after complete installation of cranes and incoming power. Crane electrical supply source will be hooked up and supplied by others. Site will be free and clear of obstructions.
Total		Total Package Price for Above: \$36,500.00 (Tax if applicable is not included)



Kinetic Equipment, Inc.
2146 W. Pershing St.
Appleton, WI 54914
PH 920-739-7438 FX 920-739-0826
WWW.ALL-LIFTSYSTEMS.COM

Proud Distributor of Demag Cranes and Components

Bridge Crane Specifications and Features

12012016A

Quote Number

CRANE DATA:
MODEL / TYPE:

QUANTITY 1
CR KIT#6 DMR 5t 10-15M TOP MT
VFC 460v
Item 20251502

CAPACITY:
SPAN:
LIFT (hook to floor):
MAX. WHEEL LOAD:
SHIPPING WEIGHT:
VOLTAGE:

5.00 T
37 FT 5.500 IN
0 FT 0.000 IN
6550 LBS
1760 LBS
460/3/60

ENDTRUCK DATA:

MODEL: DFW-S-E 112/2000
WHEEL DIAMETER: 4.4 IN
WHEEL BASE: 79 IN
SPEED: 160 VFC FPM (Ramp and Hold)
MOTOR: 2 x ZBA 90A4
GEAR: 2 x AME10
HORSEPOWER: 2 x 2.6 HP @87Hz

HOIST DATA:
MODEL:

QUANTITY 1
DMR5-5-H20/10-4/1-Z-V1.2/7.2-CC

CAPACITY:
LIFT (avail. on hoist):
SPEED:
MAIN MOTOR:
CREEP MOTOR:
GEAR:
HORSEPOWER:

5.00 TONS
32 FT
24/4 FPM(2 Speed)
ZBV112C12/2
1.3/8.3 HP

TROLLEY DATA:

QUANTITY 1
MODEL: EKDMR
CAPACITY: 5.00 TONS
WHEEL DIAMETER: 5 IN
SPEED: 100 VFC FPM (Ramp and Hold)
MOTOR: ZBC 80A4
GEAR: EKDMR5
HORSEPOWER: 1.5 HP @120Hz

STANDARD FEATURES (Please see separate detailed equipment feature list for further explanation):

HEAVY DUTY BRIDGE DRIVES WITH TOTALLY ENCLOSED GEARS IN OIL BATH.

THERMAL PROTECTION ON ALL MOTORS.

SQUIRREL CAGE MOTORS WITH FAIL SAFE DISK BRAKES ON ALL MOTIONS.

HIGHER THAN INDUSTRY STANDARD DUTY RATING FOR LONGER LIFE.

HEAVY DUTY ROPE GUIDE TO PREVENT WIRE ROPE OVERLAP.

LIMIT SWITCH FOR HOISTING UP AND DOWN WITH 4 ADJUSTABLE LIMITS.

DMR SENSOR SYSTEM

ADDITIONAL FEATURES:

RADIO CONTROL - MAGNETEK FLEX-6EX HANDHELD RADIO SYSTEM WITH TWO TRANSMITTERS, WITH SIGNAL HORN



Kinetic Equipment, Inc.
2146 W. Pershing St.
Appleton, WI 54914
PH 920-739-7438 FX 920-739-0826
WWW.ALL-LIFTSYSTEMS.COM

Proud Distributor of Demag Cranes and Components

Little Chute Municipal Building 5 Ton Bridge Crane

12012016A

Quote Number

TERMS: This quote is valid for 30 days from the above date, unless otherwise stated.

Pricing and equipment are subject to change upon final review of application and crane drawings.

The lead-time for production is: 12 weeks for production to ship after receipt of an order.

PAYMENT TERMS 30%, 30%, 30%, 10%

- 30% due immediately with order
- 30% due upon engineering completion
- 30% due prior to shipping
- 10% due 30 days after shipment

Applicable Taxes, if any, are not included.

TERMS & CONDITIONS

1. All-Lift Systems, Inc. (hereinafter the "seller") reserves the right to accept or reject any order and shall not be required to give any reason for its non-acceptance.
2. Your order, when accepted by seller, shall become a binding contract, but shall be subject to seller's unilateral cancelation in the event of strikes, lockouts, accidents, fire, delay in manufacture or transportation, acts of god, embargos, governmental action, or any other causes beyond the control of the seller, whether the same as, or different from, the matters and things hereinbefore specifically enumerated and any of said causes shall absolutely absolve the seller from any liability to the purchaser under the terms hereof. Delivery promises are based upon our best judgment. Delivery dates will be projected from the date of receipt of complete manufacturing information including necessary blueprints, purchaser acceptance, specifications, and any other information necessary for production. We will not be responsible for deliveries arriving later than promised, regardless of the cause.
3. Title to the right of possession of all products and goods shall remain vested in the seller until all indebtedness and all sums due or to become due from the purchaser, whether evidenced by note, book account, judgment, or otherwise, shall have been fully paid at which time ownership shall pass to the purchaser.
4. Unless otherwise specified, all prices are net cash on presentation of invoice. Accounts not paid within 30 days of invoice, or customer negotiated special extended Net terms, will bear an interest at the rate of 3% per month.
5. The seller's responsibility for shipment ceases upon delivery to transportation company, or purchaser's agent, and any claims for shortages, delays, or damages occurring thereafter shall be made by the purchaser direct to the transportation company or purchaser's agent, whichever is applicable. Any claims against the seller for shortages in shipments shall be made within fifteen days after receipt of shipment or are deemed waived. Quoted or estimated prices are Net F.O.B. point of shipment, unless otherwise indicated. Where transportation costs are specified in a quote, proposal or estimate, said costs are subject to change based upon available rates existing at the time of shipment.
6. The seller shall not be held liable, or responsible, for any damages; whether, on account of property damage, or personal injury, or loss of business, or for any other reason or cause whatsoever, suffered or sustained in the use, operation, order, or storage of products or goods from seller. A manufacturer's warranty may pass through to you if the terms thereof allow for pass through, but the seller shall have no liability therefore. Used equipment or products are sold without any warranty whatsoever. ALL PRODUCTS ARE SOLD BY SELLER "AS IS," WITHOUT ANY IMPLIED WARRANTY OF MERCHANTABILITY OR FITNESS FOR A PARTICULAR PURPOSE, AND THERE ARE NO WARRANTIES THAT EXTEND BEYOND THE FACE OF THE DESCRIPTION HEREOF.
7. Taxes- in addition to the prices specified, the purchaser shall pay promptly when due, any Federal, State, County, or Municipal sales, use, personal property, compensating, transaction, or similar taxes, or any public charges imposed by reason of the sale, use possession, rent, rental purchase, lease, or control of the merchandise involved as well as any other taxes, or public charges which go into effect between the time the price was established and delivery of the equipment involved.
8. In all cases the title and ownership of goods shall remain vested in All Lift Systems, Inc. until paid for and Seller may retake possession of the goods upon a breach of any payment term or at anytime Seller reasonably believes that it is insecure with respect to your ability to comply therewith.
9. Clerical errors in documents prepared by Seller or Seller's agents are subject to correction.
10. State and local taxes are not included in the above prices unless shown. When applicable, taxes will be added to the above prices.



Waukesha, Wisconsin Office
Phone (262) 542-0099
FAX (262) 542-7767

October 6, 2016

Little Chute Municipal Building
108 West Main Street
Little Chute, WI 53140

Miron Construction
1471 McMahon Drive
Neenah, WI 54956

Subject: 5 ton Capacity Crane Project
SCC Proposal #MR100616-1

Gentlement:

We are pleased to enclose our proposal for a 5 ton capacity bridge crane complete with hoist/trolley, runway rail with end stops, and conductor bar electrification, freight and installation for the Little Chute Municipal Building.

The equipment offered in our proposal represents over 50 years' experience by Superior Crane Corporation in designing, building, and servicing overhead Cranes and other material handling equipment.

The proposed equipment is backed by Superior Crane Corporation's reputation for unquestioned quality and large inventory of repair parts and 24 hour "Hot Line" service. In addition service is available through our service technicians based in Waukesha and Northeastern Wisconsin.

We would welcome an opportunity to discuss our proposal with you in greater detail, and to show how the proposed equipment will contribute to long, trouble-free service and efficient material handling.

If you have any questions, comments or concerns, please do not hesitate to call.

Yours very truly,

SUPERIOR CRANE CORPORATION

Mike Rickard



P.O. Box 1464, Waukesha, Wisconsin 53187-1464
(262) 542-0099 FAX # (262) 542-7767

October 6, 2016

TO: Little Chute Municipal Building
108 West Main Street
Little Chute, WI 53140

Miron Construction
1471 McMahon Drive
Neenah, WI 54956

Subject: Repair Bay #166
Section 41 22 00 Five Ton Capacity Bridge Crane System
Includes Addendums 1, 2, 3 & 4

PROPOSAL #MR100616-1	SALES TERRITORY MR	ESTIMATED SHIP DATE 8-10 WEEKS After receipt of signed crane approval drawings.
SHIP VIA TRUCK	F.O.B. Jobsite	FREIGHT Allowed with installation
CRANE CLEARANCE DRAWING Prints: 2	WIRING DIAGRAMS Prints: 2	PARTS MANUALS Sets: 2

- A. One (1) 5-ton capacity, Top Running Single Girder, Floor Controlled Overhead Crane, as described herein.

Span: 37'—5-1/2"

Service: CMAA Class C, Indoors

OPERATING CHARACTERISTICS				
MOTION	SPEEDS	CONTROL	MOTORS	BRAKES
Hoist	19/3.2 fpm	2 speed	7.2/1.2 HP	Dynamic Load & Disc
Trolley	80 fpm	Variable Frequency	1 @ .6 HP	Magnetic disc
Bridge	100 fpm	Variable Frequency	2 @ .4 HP	Magnetic disc

PERFORMANCE CHARACTERISTICS					
	CAPACITY	TYPE	LIFT	REEVING	LIMIT SWITCHES
HOIST	5 Ton	R&M	29'-8" Available	4 part single reeved	Geared Upper/Lower
TROLLEY	Type: R&M				
BRIDGE	End Trucks: R&M		Wheel Base: 6'- 6-3/4"		
	Drive: A-4		Wheels: Four (4) @ 6-5/16" diameter		
	Girders: Wide Flange				
	Runway Rail: 30 lbs. ASCE		Runway Elect: 4-Bar 90 amp FS		
ELECTRICAL	Power: 460 volts, 3 phase, 60 Hz				
	Control Volts: 115 VAC				
	Span Conductors: Festooned Flat Cable on C-Track				
	Pendant Location: Radio control with spare transmitter, warning horn and back-up festooned pendant				



P.O. Box 1464, Waukesha, Wisconsin 53187-1464
(262) 542-0099 FAX # (262) 542-7767

DATE: October 6, 2016

Proposal No: #MR090616

Page: 2

SPECIAL FEATURES

- Adjustable upper and lower hoist travel limit switches
- Dynamic load brake
- Direct acting disc brakes
- Rubber bridge & trolley bumpers
- NEMA control enclosures
- Fused disconnect switch
- Mainline contactor operated by Start/Stop buttons

B. One (1) lot Runway Electrification System x 115'-0" long; consisting of 4-bars of enclosed conductor bar, complete with tandem collector shoes, end caps, power-feeds, hangers, and weld on support brackets.

C. One (1) lot Runway Rail x 115'-0" long, consisting of 30 lb. ASCE rail, splice bars, hook bolts and runway end stops are included. Note: Runway end stops are field located and welded into position.

D. One (1) lot Prevailing Wage (non-union) labor and equipment required to deliver and install the above runway rail material, overhead bridge crane and conductor bar system. Includes onsite crane operation instruction with installation of the crane.

TOTAL PROJECT PRICE \$35,410.00

Add \$1,100.00 to the above price for performance and payment bond.



P.O. Box 1464, Waukesha, Wisconsin 53187-1464
(262) 542-0099 FAX # (262) 542-7767

DATE: October 6, 2016

Proposal No: #MR090616

Page: 3

CLARIFICATIONS/EXCEPTIONS:

1. Freight is included in the installation cost.
2. Insurance coverage is provided but does not meet all of specified coverages. See attached copy of SCC's standard certificate of liability insurance.
3. Load test is included with weights to be provided by the customer. If SCC is to provide the weights for load testing an additional cost will be charged to the customer.
4. 1.3 D: Certificates, permits, fees, bonds, testing are not included.
5. 1.6 A: Maintenance and/or service, after installation, is not included. A maintenance/service contract can be provided at additional costs.
6. 2.2 A: Rail is 30# ASCE rail, not 40# ASCE rail.
7. 3.3 B: Inspection by an enforcing agency is not included.
8. Runway end stops are weld down not removable.
9. All quote lead times are subject to adjustment based on current production at the time of order.
10. Approval drawings with equipment weights, wheel loads and dimensional information to be provided prior to fabrication and assembly of the bridge crane. It is the customer's responsibility for certifying and approving all dimensional measurements that we build our equipment to.
11. The crane are tested in our shop without load before disassembly for shipping.
12. Manuals are included and are delivered after the installation of the equipment unless otherwise noted in this proposal. Additional paper copies or electronic CD copies are available for \$75.00 per additional copy. This pricing is only valid if additional Maintenance/Parts Manuals are specifically outlined in the customers' purchase order at time of order placement.
13. Our cranes are designed and built in accordance with OSHA, ANSI, CMAA and NEC.
14. Customer is to bring 460/3/60 electrical power to the conductor bar system at time of the crane installation. The final electrical hookup from the incoming building power to our mainline power feeds on any of our supplied equipment is to be completed by others.
15. This proposal does not include load testing of the crane. SCC will perform a test lift if the customer has a known weight on site that SCC deems is suitable for the test lift.



P.O. Box 1464, Waukesha, Wisconsin 53187-1464
(262) 542-0099 FAX # (262) 542-7767

DATE: October 6, 2016

Proposal No: #MR090616

Page: 4

16. There are no special heat shields included in this proposal unless otherwise stated.
17. All installation work performed by Superior Crane Corporation is performed by non-union workers, prevailing wage.
18. Runway steel to be installed by others to CMAA specifications.
19. If welding material suspended from the hoist load hook the customer needs to provide a means of electrically insulated protection to prevent electrical current flow that may damage the overhead bridge crane and hoist components.
20. The NEC requires that any live part of electrical equipment be a minimum of 8'-0" above the floor or working surface or if not, it must be guarded. This proposal does not include any special conductor bar guarding. Guarding can be provided and installed at an additional cost if required.
21. SCC installation equipment is not equipped with non-marking tires. If tire socks are required (if available) tire socks can be provided at an additional cost.
22. Variable frequency parameters are adjusted for the customer at time of installation. If additional parameter adjustments are requested after SCC has completed the installation and left the jobsite our standard published rates will apply for all additional site visits.
23. This price does not include any standby/delay time outside the control of Superior Crane. Any time lost on-site due to these circumstances will be billed at prevailing wage rates & materials rates. If time lost results in additional travel & living expenses, these will also be billed at prevailing wage rates.
24. Work site to be free and clear with open floor space for all lift equipment and or crane equipment required for the installation of the overhead bridge crane, runway rail and mainline electrification.
25. Unless otherwise specified, all work to be performed on a straight time first shift basis during a normal work week in one consecutive trip. Work area to be reasonably clear and accessible. Construction permits, if required, shall be obtained by the owner.



P.O. Box 1464, Waukesha, Wisconsin 53187-1464
(262) 542-0099 FAX # (262) 542-7767

DATE: October 6, 2016

Proposal No: #MR090616
Page: 5

TERMS AND CONDITIONS

ESTIMATED SHIP DATE: 11-13 weeks after approval
Approvals: 2 weeks after order/contract

PAYMENT TERMS: PROGRESS PAYMENTS:

10% down with order

80% due on or about the first day of each month,
progress payments will be billed for the cost of
materials, labor, engineering, and other services
incurred to date, proportionate to the amount of the
contract, as estimated by Superior Crane Corporation.

10% due net 30 days after shipment

TAXES: WI Sales Tax Is Not Included.

PROPOSAL VALIDITY: 30 Days from Date of Proposal.

WARRANTY: Superior Crane Corporation warrants its material
handling equipment products to be free from defects in
materials and workmanship for Two (2) Years from date
of shipment.

Respectfully submitted,

SUPERIOR CRANE CORPORATION

Mike Rickard

ACCEPTED BY

Company: _____

By: _____

Title: _____