



AGENDA

REGULAR BOARD MEETING

PLACE: Little Chute Village Hall
DATE: Wednesday, September 19, 2018
TIME: 6:00 p.m.

REGULAR ORDER OF BUSINESS

- A. Invocation
- B. Pledge of Allegiance to the Flag
- C. Roll call of Trustees
- D. Roll call of Officers and Department Heads
- E. Public Appearance for Items Not on the Agenda
- F. Other Informational Items—August Fire Monthly Report and August Report
- G. Approval of Minutes
Minutes of the Committee of the Whole Meeting of September 12, 2018
- H. Operator License Approvals:

Leitermann, Peter	Hollander's	Little Chute
Wacaser, Ashley	5 th Quarter	Little Chute
Johnson, Nastassja	Village Limits	Little Chute
- I. Resolutions:
 - a) *Adopt Resolution No. 28, Series 2018, Consideration of an Initial Resolution Regarding Industrial Development Revenue Bond Financing for GLK Foods, LLC Project. Information with respect to the job impact of the project will be available at the time of consideration of the Initial Resolution.*
 - b) *Adopt Resolution No. 29, Series 2018, Commercial Horizons CSM*
 - c) *Adopt Resolution No. 30, Series 2018, Karen Drive CSM*
 - d) *Adopt Resolution No. 31, Series 2018, Altergott CSM*
- J. Department and Officers Progress Reports
- K. Discussion/Possible Action—FVMPD Office Position
- L. Discussion—Small Business Saturday 2018
- M. Discussion/Action—2018 Deer Culling

- N. Disbursement List
- O. Call for Unfinished Business
- P. Items for Future Agendas
- Q. Closed Sessions:
19.85(1)(e) Wis. Stats. Deliberations or negotiations on the purchase of public properties, investing of public funds or conducting other specific public business when competitive or bargaining reasons require a closed session. *Economic Development Negotiations – (Land acquisition and Development Negotiation Review)*
- R. Return to Open Session
- S. Adjournment

Requests from persons with disabilities who need assistance to participate in this meeting or hearing should be made with as much advance notice as possible to the Clerk's Office at 108 West Main Street, (920) 423-3852, email: Laurie@littlechutewi.org Prepared: September 14, 2018

VILLAGE OF LITTLE CHUTE MONTHLY REPORT – AUGUST 2018



Little Chute

E S T A B L I S H E D 1 8 4 8

August 2018

Village Administrator Report to the Board of Trustees

Submitted to the Village Board of Trustees and the residents of Little Chute is a report of the various departments of the Village. The information contained herein is intended to keep the Board and public apprised of their government at work.

VILLAGE OF LITTLE CHUTE MONTHLY REPORT – AUGUST 2018

The information in this report is meant to provide a snapshot of Village operations for the month preceding. The goal is to provide statistics and measures that can be analyzed and viewed over time. These reports will be reported to the Board on a monthly basis. The reports will be added to the official files of the Village of Little Chute and be published on the Village's website at www.littlechutewi.org.

As we continue this effort, the style and metrics will be fine-tuned to better capture operational aspects that will serve staff, the board and public with a more robust understanding of operations. Ultimately, this information can be used to assist in policy and fiscal decisions on the future of Village operations.

Department Overview

The report will track monthly activities for the following:

- Village Administrator
- Clerk
- Community Development
- Finance Department
- Fox Valley Metro Police Department
- Kimberly/Little Chute Library
- Parks, Recreation and Forestry Department
- Department of Public Works
- Engineering Department

Questions or Comments

Should you have questions or comments with the information contained herein, please contact the Village Administrator:

James P. Fenlon
Village Administrator
108 W. Main Street
Little Chute, WI 54140
920-423-3850
james@littlechutewi.org

Village Administrator

HIGHLIGHTS

- The Village's new Finance Director, Valerie Clarizio, was appointed and started in early August and is quickly getting up to speed in her new role. Welcome the team Valerie!
- 2019 Budget guidance and the official budget calendar were adopted. Preliminary work on the budget has been started by all village departments.
- Executed on the second phase of a micro-loan for Seth's Coffee so that they can add outdoor seating.
- The Village Board approved an amended site plan and development agreement for Cherryland's Best, approved an amended a development site plan for CR Structures/Trigger Action Sports development, approved moving forward on maintenance of the Grand Avenue/Main Street crosswalks and approved a recommendation to update traffic controls on CTH N north of I-41.
- Finalized the 2019-2023 CIP with staff.
- With the Heart of the Valley Chamber of Commerce, hosted a Little Chute Business Association meeting with a number of great updates for Little Chute businesses.
- Continued work with a number of industrial and commercial developers regarding future opportunities in the Village of Little Chute.

TOP PRIORITIES FOR SEPTEMBER

- Present the CIP for 2019-2023 to the Board of Trustees for adoption in October.
- Begin to finalize the 2019 budget which will be presented in the month of October with adoption in the month of November.
- Continue to work on numerous development opportunities across the village and finalize a number of documents related to those developments, including CSMs, rezoning and development agreement review/adoption.
- Host a final presentation from the consultant that has been working on the Quiet Zone effort.
- Finalize and host 3rd Quarter Training for all staff.

Clerk

HIGHLIGHTS

We would like to thank the residents of Little Chute for their 22% voting participation rate for the Partisan Office Primary election. As always, elections take up a large amount of time and resources in the Clerk's office so a number higher than the Wisconsin average is great. The next two months we will be preparing for the November election along with our other various duties.

- Continue in-person early voting
- Enter returned absentee ballots in voting system
- Public test of voting equipment 8-7-18
- Conduct August 14th Partisan Office Primary Election
- Report election results and ensure timely delivery to the county
- Agendas and Minutes for 5 meetings
- Village Market assistance
- Operator/Solicitor licensing
- Social media/website posting and monitoring
- Supply ordering
- Weekly maintenance reports
- Civic Center/Village Hall rentals

TOP PRIORITIES FOR SEPTEMBER

- Coordinate Communication Calendar
- Finalize the Village Market
- Agendas and Minutes for 6 meetings
- Operator/Solicitor licensing
- Social media/website posting and monitoring
- Supply ordering
- Weekly maintenance reports
- Civic Center/Village Hall rentals

CLERK'S OFFICE DATA FOR AUGUST

Village of Little Chute Website and Social Media Metrics - August 2018						
	This Month	This Month Last Year	% Change	Year to Date	Last Year to Date	% Change
Website Visits	11,180	10,521	6.26%	127,849	119,923	6.61%
Website Page Views	16,745	14,194	17.97%	165,816	132,117	25.51%
Facebook Likes	3,000	2,247	33.51%			
Facebook Reach	163,698	52,807	209.99%	579,506	457,150	26.76%
Village Hall Blog View	561	757	-25.89%	4,106	4702	-12.68%
Instagram Followers	390	169	130.77%			
Twitter Followers	295	200	47.50%			
Twitter Impressions	9,855	3,621	172.16%	40,805	45,897	-11.09%

Community Development

HIGHLIGHTS

- Met with Commercial Developers regarding sites in village.
- Continued Inspections of homes, apartments, schools and commercial projects.
- Completed Annexation on Holland Road
- Attended Economic Development Summit in Green Bay
- Assisted developers with Zoning changes and requirements.

TOP PRIORITIES FOR SEPTEMBER

- Meet with builders and owners about upcoming commercial projects.
- Continued Inspections of homes, apartments, schools and commercial projects.
- Inspector code training.
- League Assessor training.
- Budget submissions for 2019.
- Complete TID 6, 7, 8 valuation documents for submittal to the Department of Revenue.
- Assist Administration and Finance with valuation status.
- Assist Administration and Finance with real estate purchase.
- Assist developers with Zoning changes and requirements.

COMMUNITY DEVELOPMENT AUGUST DATA

Community Development Department 2018 Permit Data			
	August-18	2018 TOTALS	2017 TOTALS
Permits Issued	130	475	644
Property Complaints	3	43	37
Property/Field Inspections	111	580	1067
Letters Sent		0	0
Action Corrected	1	9	21
Referred for Action	1	4	0
Ongoing	1	30	16
Community Development Department 2018 Permit Data			
	August-18	2018 TOTALS	2017 TOTALS
Permits Issued	130	475	644
Permit Fees	\$10,712	\$196,089	\$114,330
Permit Value	\$1,372,869	\$38,881,813	\$35,708,279

Finance Department

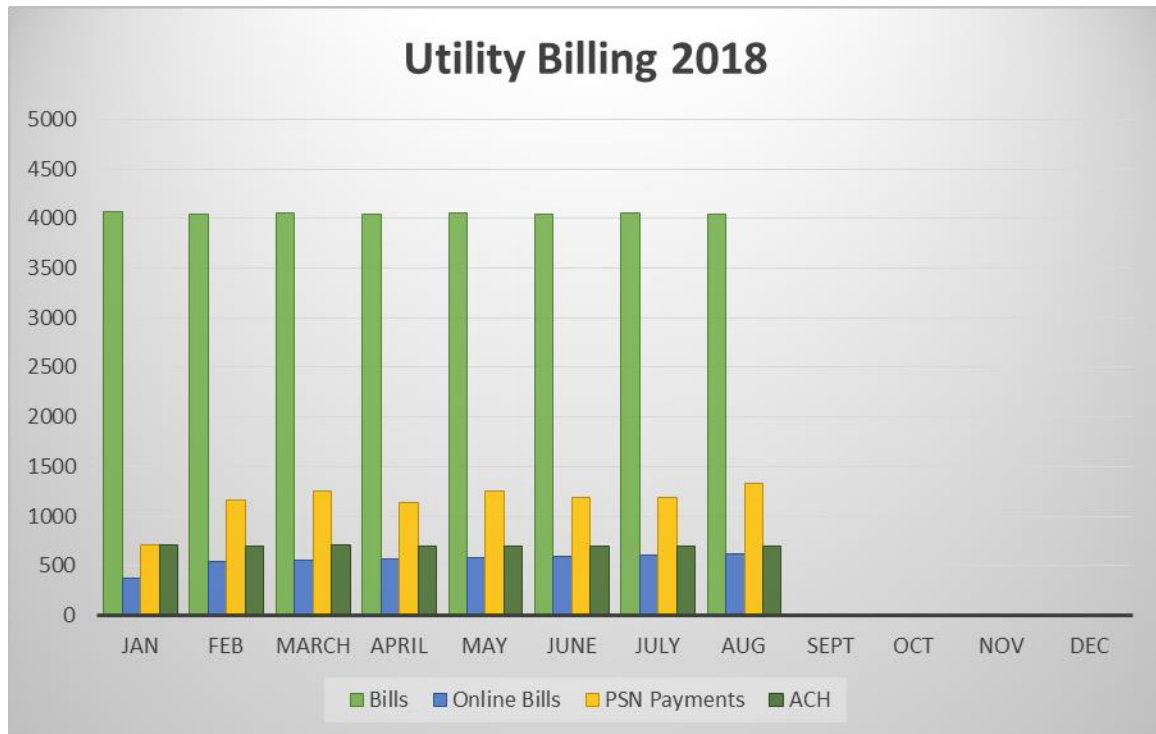
HIGHLIGHTS

- 4,048 Utility Bills created and 698 ACH payments processed by Finance Department.
- 112 Service Orders (Final Reads, High/Low Reads, Meter Installations) for Utility Billing created and coordinated with MCO.
- 615 Ratepayers opted out of postcard billing and 1,325 ratepayers utilized PSN for payments through August 31, 2018.
- 251 Landlord Notices were mailed for tenant delinquency notification.
- Continue work to finalize 2017 Audit.

TOP PRIORITIES FOR SEPTEMBER

- Complete 2017 Comprehensive Audited Financial Statements (Sept/Oct).
- Continue work on the 2019 Budget
- Finance Director will attend the Municipal Treasurer Conference on September 20th and 21st
- Two Finance staff members attended the Civic symposium on September 13th and 14th.

FINANCE DEPARTMENT AUGUST DATA





Fox Valley Metro Police Department

HIGHLIGHTS

- **HIRING/PROMOTIONS** - With the departure of full-time clerk Inge Murphy, we are in the process of filling that position. The goal is to fill the position by hiring a new, office manager. The new job description was authorized by the board last week. We are working on getting the pay structure approved and the position approved. The plan is post the job internally between both villages.
- **ADMINISTRATION** - On August 29th Chief Meister was a guest on the Fresh Take radio show with Josh Dukelow on WHBY radio. <https://www.whby.com/2018/08/30/fox-valley-metro-pd-chief-on-cooperation-in-law-enforcement/>
- **FACILITIES** - The backup generator for the public safety building recently had to have some repairs done to the tune of several hundred dollars. In speaking with staff and our custodian, it is my understanding that the generator is at or near the point of replacement. This is something we must start planning replacement for. It is estimated that a new system would cost between \$20,000 to \$30,000.
- **FLEET** - Our department currently used Ford Police Interceptors in our fleet. Ford has recently announced that they will be making some significant changes to the Interceptor by 2020. As such, they are manufacturing only a limited number of Interceptors for the 2019 model year. We must prepare for the possibility that we might have to purchase another make/brand of squad cars in the coming years.
- **PATROL** –
 - With the start of school, we have had extra patrol being conducted around the schools to enhance safety for the students.
 - In preparation for the start of school, the social media team produced a brief video about traffic safety in the school zones. The video consisted of an adult, school crossing guard showing the public how to drive in the school zones.
 - Our department was able to purchase a drug processing ventilation hood through a local grant. The device allows for our staff to open, test and package substances in a safe manner. The grant is through the Capital Credit Union Elevate Communities Grant. We were awarded \$5,000.00. The ventilation hood cost about \$3,500. The remaining funds are being used to purchase other testing and safety equipment associated with processing drugs for evidence.
- **INVESTIGATIONS**
 - Investigator Van Schyndel and Capt. Slotke transitioned into taking the lead on evidence/property management since Clerk Murphy had previously done this but has since left the department. They are also processing all evidence requests from the District Attorney's Office.
 - A full audit of our evidence room was conducted.
 - Three (3) officer candidate background checks were completed.
 - Sexual Assault Kit Initiative (SAKI) kits are coming back from crime lab and follow up being completed.
 - Scam/fraud case investigated from Kentucky PD
 - Numerous devices (over 20 done and more than 20 more to go) were digitally examined for a variety of cases to include child porn, child exploitation, stalking, sexual assault, scam/fraud, domestic violence and drugs.
 - Multiple sexual assault cases are being worked on.
 - There was a stalking case investigated which resulted in a search warrant for residence.
 - Child exploitation case resulting in search warrant for residence.
 - Two (2) electronic devices were forensically analyzed for Kaukauna PD
 - We had a drug overdose death investigation
 - We had a suicide death investigation case
 - A Multi jurisdiction fraud case was solved and closed with lots of high value items recovered.
- **TRAINING**
 - The two, new patrol officers are in about their third week of their 12-week field training process.
 - Department Unified Tactics training has begun.
- **SPECIAL EVENTS**
 - During August we participated in the Touch a Truck Event at Doyle Park and Cop on a Rooftop event at the Dunkin Donuts in Darboy.

As always, you can check out what we're doing by visiting our Facebook page:
<https://www.facebook.com/FoxValleyMetro>

FOX VALLEY METRO POLICE DEPARTMENT AUGUST DATA

The below table shows activity for August 2018. Some information is incomplete due to the transition from the old records system to the new one.

August 2018						
	This Month	This Month Last Year	% Change	Year to Date	Last Year to Date	% Change
Total # of Incidents				5648	5039	12%
Citizen Generated				1441	1655	-13%
Officer Initiated				1149	1062	8%
Citizen Contacts	284	212	34%	1438	1127	28%
Traffic Citations	105	87	21%	591	509	16%
Speeding	18	20	-10%	113	81	40%
Seatbelt	5	17	-71%	61	92	-34%
OWI	13	4	225%	49	30	63%
Ordinance Summons	25	25	0%	185	144	28%
UA Drinking	0	3	-100%	2	5	-60%
Parking Tickets	13	16	-19%	398	304	31%
Warrant Pick Ups				12	17	-29%
	This Month	This Month Last Year	% Change	Year to Date	Last Year to Date	% Change
Adult Criminal Referrals				135	159	-15%
Juvenile Criminal Referrals	1	6	-83%	33	72	-54%
Offense Reports (CAD)				5118	4445	15%
Narratives				530	594	-11%

Kimberly/Little Chute Joint Public Library

HIGHLIGHTS

- Summer Reading Program 2018 has been completed. The library has been a busy place this summer, and it is great to see so many families excited about reading and enjoying the great programs that are offered. - Ann
- All staff training on Inter Library Loan. Staff was trained in placing orders and checking the status for items held by libraries outside the library catalog. This will help us provide immediate information to patron's information request in regard to orders.
- Little Chute Digital signage has been up for several months and staff are keeping programs updated weekly.
- Jon Wos facilitated a collaborative art project he will be donating to Kimberly when is has been completed. The piece is a grouted glass bookshelf. Several community members helped create the piece.
- Leif Larson donated a concept painting of the mural on S & S Trading. The piece is currently on display in the Little Chute Library.
- Little Chute bookshelves were moved to eliminate the accessibility issues from support columns. We completed the task with the help of a volunteer who also helped with wallpaper removal.
- Our library team performed exceptionally during a three day internet outage in Little Chute due to an equipment failure on the AT&T network. Patrons could not use our computers for internet but the team maintained circulation and services the best they could with help from the Kimberly Library. Several team members put in extra hours to clean up items that could not be checked in and shelved during the outage.

TOP PRIORITIES FOR SEPTEMBER

- Facilitate equipment replacement through OWLS according to plan. Equipment is typically replaced at warranty expiration. OWLS establishes specifications and orders directly through the vendor for best pricing. In addition to all network maintenance, OWLS provides additional support for all software and equipment within the warranty period at no additional cost to member libraries.
- Public Printing Equipment Staff Training and Public cues.
- Website/Social media review and strategy development
- Winter programming planning, and Fall program finalization.
- Develop Annual training schedule.
- Restructure Display Plan for 2019. We will be integrating community member and organizational displays in addition to artist displays. Displays will be curated and reflect our mission and services.
- Investigate digital signage options with automated changes through feeds. Determine placement of signage in Kimberly.
- Complete donation request for hotspot.
- Continue to lead Integrated Library System (Catalog and Database) merger discussions with Winnefox.
- Recruit members to the Friends of the Library.

JOINT LIBRARY AUGUST DATA

MONTHLY STATISTICS REPORT - KIMBERLY-LITTLE CHUTE PUBLIC LIBRARY - AUGUST 2018

Category		Current Month KIM	Current Month LT	Current Month Combined	YTD Combined	Previous Year Comparison	% Change
Circulation		16,109	10,853	26,962	197,919	26,018	4%
Self Check included above		2794	2500	5,294			
		17%	23%		-		
Collections	Title count	41,640	41,424	83,064		85,328	-3%
	Item count	43,605	43,006	86,611		89,269	-3%
					-		
Computer Use	Sessions	674	397	1,071	8,106	1,069	0%
					-		
Wireless	Distinct clients	486	475	961	7,452	893	8%
	Daily average	35	29	64	64	60	7%
					-		
Interlibrary Loan	Items borrowed	4,062	2,275	6,337	48,512	6,082	4%
	Items loaned	2,938	3,236	6,174	46,429	5,274	17%
					-		
Overdrive Usage	eBook uses	682	497	1,179	7,175	1,209	-2%
Previous Month	Audiobook uses	276	161	437	7,629	512	-15%
	Video	2	1	3	4,641	2	50%
RB Digital	Magazine uses	9	2	11	268	13	-15%
					-		
Patron Visits		6,143	3,839	9,982	77,931	9,091	10%
Programming	Adults	2	4	3	22	12	-75%
	Children	1	2	-	47	8	-100%
	Teens	-	-	1	9	2	-50%
	Community (all ages)	-	1	1	7	1	0%
Program Attendance	Adults	44	35	79	706	122	-35%
	Children	60	300	360	3,955	237	52%
	Teens	-	-	-	100	5	-100%
	Community (all ages)	-	252	252	322	300	-16%
Web Site sessions				4,799	14,925	4,575	5%
Social Media	Facebook fans			1,652		1,340	23%
	Pinterest viewers			345		250	38%
	Twitter followers			111		109	2%
Hoopla							
	Audiobook	September	October	November	December	January	February
	Comics	27	30	30	40	86	95
	Ebook	0	0	0	4	22	9
	Movie	15	13	27	43	66	40
	Music	12	22	18	23	32	22
	Television	11	9	14	16	19	16
		2	1	3	1	17	16
	Audiobook	March	April	May	June	July	Aug
	Comics	111	105	101	127	127	136
	Ebook	8	8	15	11	13	11
	Movie	48	57	59	41	50	46
	Music	34	23	16	27	22	29
	Television	24	33	20	18	26	24
		8	14	15	20	13	18

Parks, Recreation and Forestry Department

HIGHLIGHTS

- Began grading work at the Legion 3 Baseball Field.
- The municipal services crew removed over 20 stumps in the Village.
- All seasonal staff left for the season in parks, recreation, and the pool.
- Partnered with the library to host pages in the park.
- Hosted the Youth Carnival, Party on the Plaza, and Movie on the Plaza.
- Community Band held their final summer concert.
- Hired crossing guards for the upcoming school year and held our summer meeting in cooperation with the Village of Kimberly.
- Volunteers installed sidewalk around the south east corner of the Rec Center at Van Lieshout Park.
- Hosted our first ever dog swim at Doyle Pool on August 25.
- Registration for fall/winter programs began on Wednesday, August 1 – families can register online, in our office, or by mail
- Held annual Youth Outdoor Carnival at Legion Park 8/8 – over 800 people attended (event included numerous games & inflatables, prizes, balloon twister, DJ, and food)
- Held our second Movie On The Plaza event on Wednesday, August 8 (rescheduled from 8/1 due to bad weather) – over 125 attended
- Jets Football season began on 8/13 – total of 74 players registered (equipment handout 8/13 AM, player meeting with coaches on 8/13 PM, practice started 8/14 PM)
- Held our first Touch A Truck Event at Doyle Park on 8/14 – over 400 people attended (free event included exploring various vehicles, kids hats, games, and craft)
- Held our annual Party On The Plaza (joint program with library) on 8/15 – over 350 attended (free event included large games for families to play, culvers ice cream, live band, and craft)

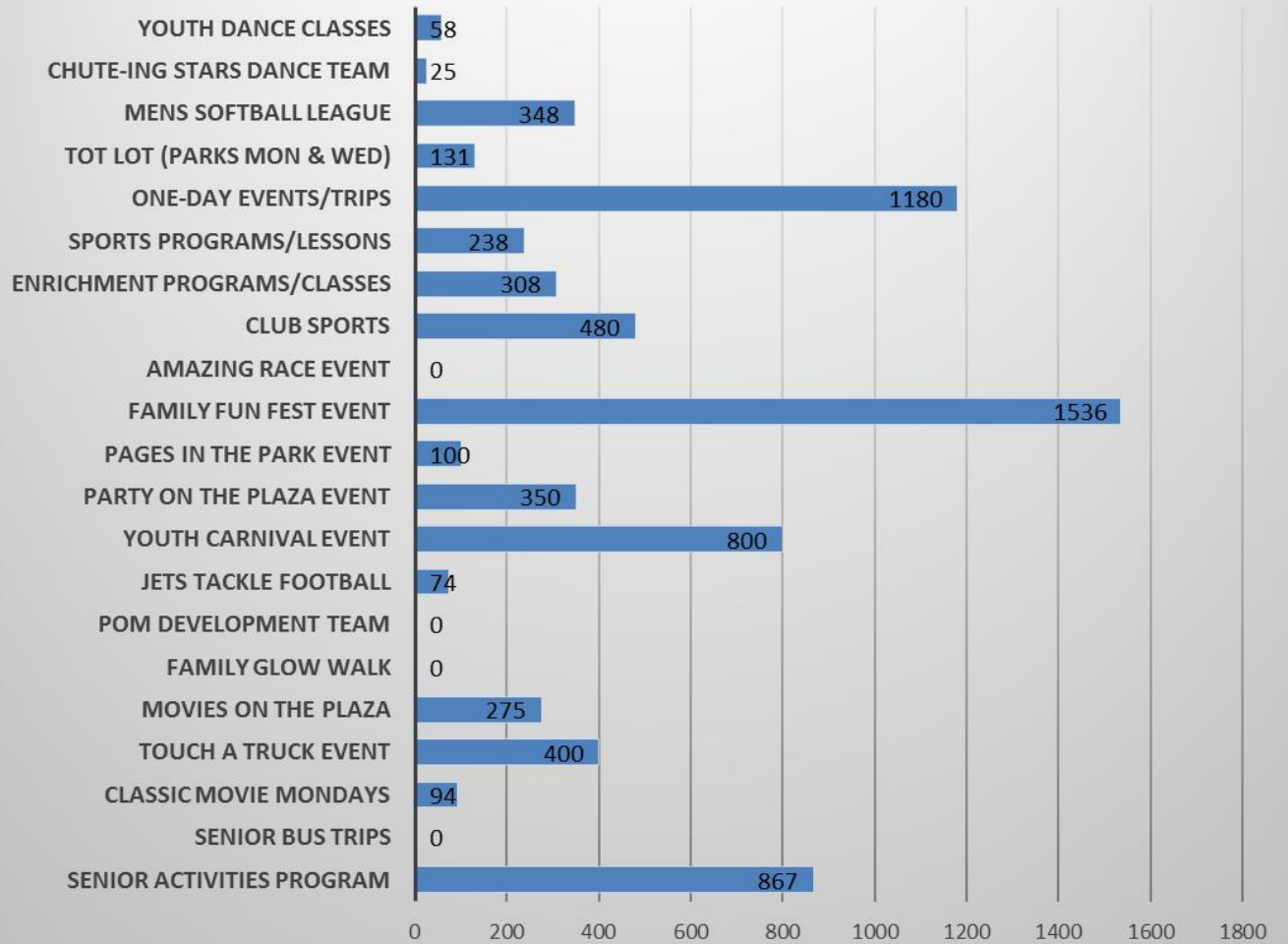


TOP PRIORITIES FOR SEPTEMBER

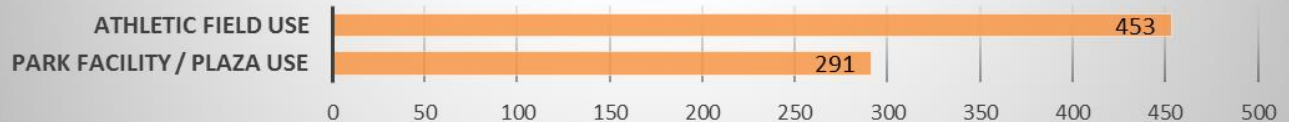
- Install the new monument sign outside Fox Valley Tool and Die and retro fit two other monument signs through the Village Wayfinding Plan.
- Midwest Athletic Fields to begin work on Van Lieshout Baseball Field Infield Renovation Project in late September.
- Compile the municipal tree planting list for October.
- Plan and prepare for the Creekview Park Playground Installation scheduled for October 3.
- Final prep for fall programs starting in September – teen/adult yoga, pom development team, youth soccer, youth flag football (schedules, rosters, concussion forms, equipment, ...)
- Planning for jets football banquet in October (confirm banquet hall and meal, mailing to parents and coaches, prep for sale of banquet tickets early October, etc.)
- Planning for family glow walk in October (special promotion of event, ordering of supplies, coordinating volunteers workers, etc.)



2018 Year-To-Date PROGRAM PARTICIPATION



2018 Year-To-Date SHELTER/FACILITY/FIELD USAGE



2018 TO-DATE POOL PARTICIPATION COUNTS (84 Days of Operation)



Department of Public Works

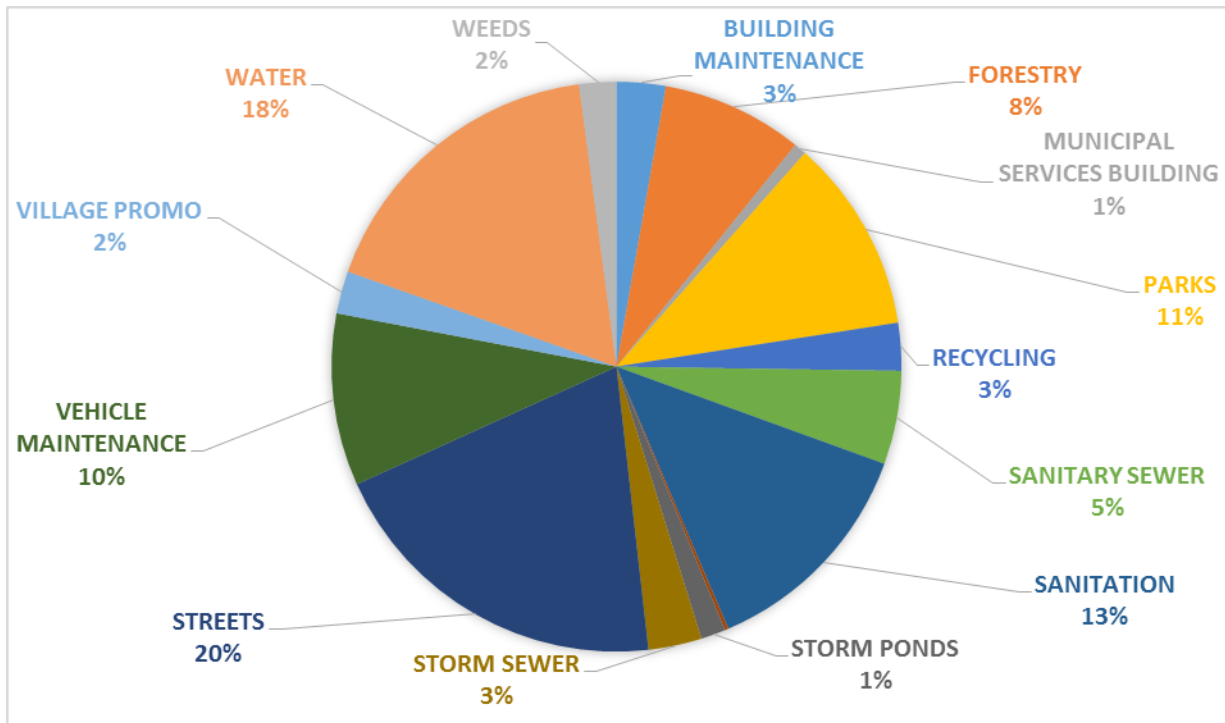
HIGHLIGHTS

- Marty Janssen, Operations Manager and the three working foreman Todd Bruyette, Vincent Lamers and Jason Verbeten, attended a Leadership Skills for Supervisors Conference.
- On 8/28 the Village received a large rainfall (over 2 inches). Had some flooding in areas and a water main break on Moasis Drive at Taylor.
- Started crack sealing streets. Will continue in September.
- Painted cross walk and other pavement markings in school zones in preparation of the first day of school.

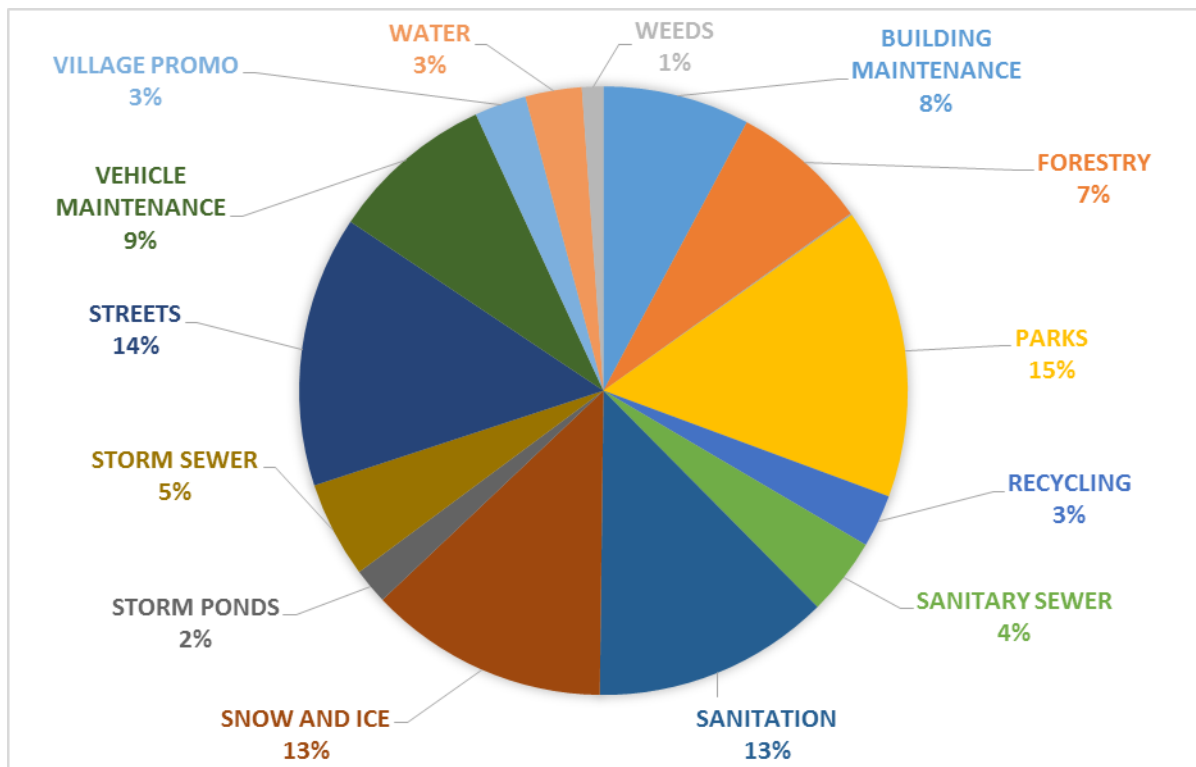
TOP PRIORITIES FOR SEPTEMBER

- Continue to develop a fleet management program.
- Purchase final two vehicles in the 2018 CIP Budget.
- Posted open Public Works Parks Forestry crew position. Deadline to accept applications will be September 28th. For more information visit <http://wi-littlechute2.civicplus.com/jobs.aspx> or call (920) 423-3865.
- Start storm water management program.
- Prepare fleet for fall leaf collection.
- September 10th-11th - Kent Taylor, Director of Public Works, and Scott Wegand attended a two day stormwater conference “Certified Municipal Stormwater Inspector”. The conference focused on stormwater permit compliances.
- Residential tire pickup from September 17th to 20th. Up to four residential tires per household.

AUGUST Department of Public Works & Parks Department Hours Worked (Includes Full & Part-time Hours)



Hours Worked Year to Date (Includes Full & Part-time Hours)



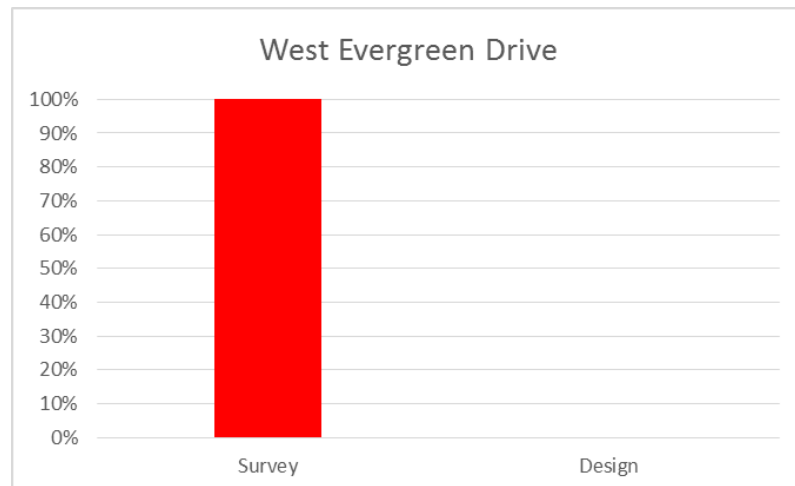
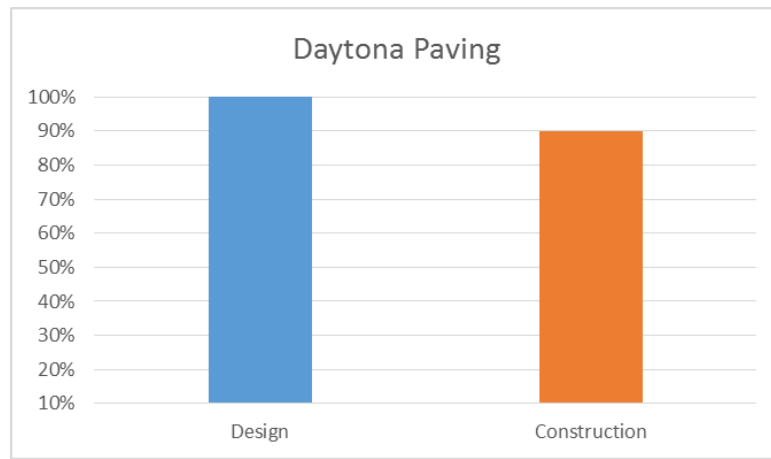
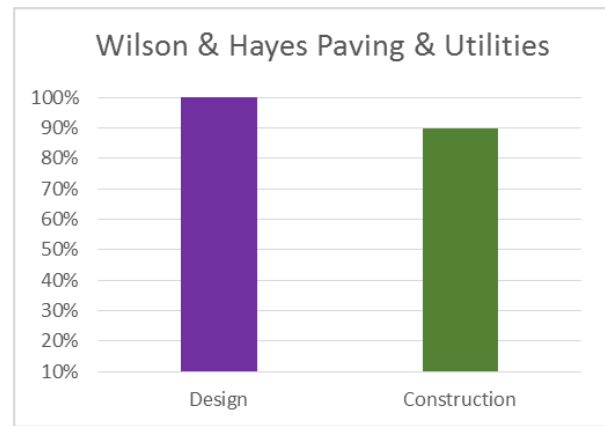
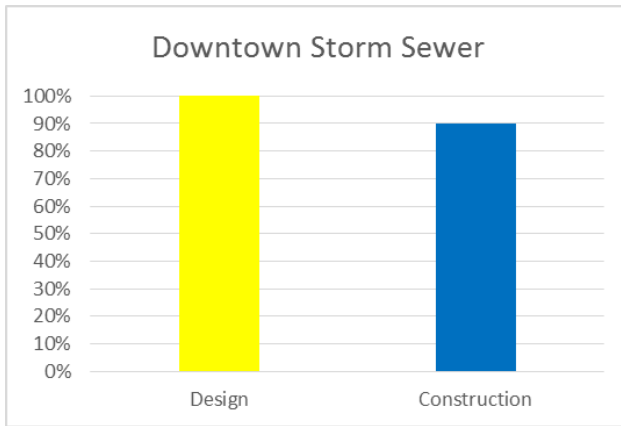
Engineering Department

HIGHLIGHTS

- **Daytona Lane, Wilson Street & Hayes Street Paving Projects 2018** - Vinton Construction has completed road concrete paving operations on all three 2018 project streets.
- **2019 Bohm Drive – Water Main** - The field survey work for this project is completed and base mapping has begun.
- **Evergreen Drive Design** - The field survey information has been collected for all of Evergreen Drive from French Road to Freedom Road. Base map preparation has also begun.
- **Certified Survey Map** - A Certified Survey Map (CSM) for a parcel currently Owned by the Village of Little Chute is completed and is ready to be recorded.

TOP PRIORITIES FOR SEPTEMBER

- **Downtown Crosswalk – Main & Grand** - A favorable bid was received and approved by the Village Board to move forward with construction. Work is expected to be completed by September 17th with normal traffic re-established by this date.
- **Quiet Zone Presentation** - A presentation will be provided to the Village Board on September 26, 2018 by the Village Consultant to discuss what will be necessary to move forward in order to create a Village wide quiet zone.
- **Daytona Lane, Wilson Street & Hayes Street Paving Projects 2018** - Sidewalk and apron restoration is on schedule with substantial completion expected by September 21st.
- **Downtown Storm Sewer Project** - Storm sewer construction is complete and restoration efforts for paving and grass areas are expected to be completed by the end of September.
- **2018 Village of Little Chute Staff Engineer** - The Engineering Department is thankful for the dedication and effort of our Staff Engineer Kurt Geiger who devoted much of his time in the design and reconstruction of existing streets and public utilities. Kurt has accepted a position with a private consulting firm in Fond du Lac. We wish Kurt the best of luck with his career!



MINUTES OF THE COMMITTEE OF THE WHOLE MEETING SEPTEMBER 12, 2018

Call to Order

President Vanden Berg called the Committee of the Whole meeting to order at 6:00 p.m.

Roll Call

PRESENT: President Vanden Berg, Trustee Peterson, Trustee Elrick,
Trustee Peerenboom, Trustee Hietpas, Trustee Van Lankvelt, Trustee Smith
ALSO PRESENT: James Fenlon, Laurie Decker, Valerie Clarizio, Kent Taylor,
Chris Murawski, Adam Breest

Public Appearance for Items not on the Agenda

None

Approval of Minutes

Minutes of Regular Board Meeting of September 5, 2018

Moved by Trustee Smith, seconded by Trustee Peterson to Approve Minutes of the Regular Board Meeting of September 5, 2018

Ayes 7, Nays 0 – Motion Carried

Discussion—2019-2023 CIP

Administrator Fenlon presented an overview of the five year draft Capital Improvement Plan which included maps. Trustee Elrick questioned Engineer Murawski where we are with the DNR as far as Storm Water goes and was advised it is always part of the process.

Discussion—Agenda Process

Administrator Fenlon discussed the Agenda Process and suggested going to digital and to stop paper copies unless requested. There will still be copies made available for the press and the public. Administrator Fenlon advised they are exploring camera options so meetings could be digitally recorded and be accessible Thursday mornings.

Unfinished Business

None

Items for Future Agendas

Resident Engagement Discussion

Quiet Zone Presentation scheduled for September 26, 2018

Adjournment

Moved by Trustee Smith, seconded by Trustee Peterson to Adjourn the Committee of the Whole Meeting at 6: 43 p.m.

Ayes 7, Nays 0 – Motion Carried

VILLAGE OF LITTLE CHUTE

By: Michael R. Vanden Berg, Village President

Attest: Laurie Decker, Village Clerk

VILLAGE OF LITTLE CHUTE, WISCONSIN

RESOLUTION NO. 28, SERIES 2018

**INITIAL RESOLUTION
REGARDING INDUSTRIAL DEVELOPMENT
REVENUE BOND FINANCING FOR
GLK FOODS, LLC PROJECT**

WHEREAS, Section 66.1103 of the Wisconsin Statutes (the “Act”) authorizes the Village of Little Chute, Wisconsin (the “Issuer”), to authorize the issuance and sale of bonds by the Issuer to construct, equip, re-equip, acquire by gift, lease or purchase, install, reconstruct, rebuild, rehabilitate, improve, supplement, replace, maintain, repair, enlarge, extend or remodel industrial projects; and

WHEREAS, Peter Pickle Properties, LLC, a Wisconsin limited liability company, and/or a related entity, and/or a limited liability entity to be formed (collectively, the “Borrower”), desires to complete a project to be owned by the Borrower consisting of financing the (i) acquisition of land and construction of an approximately 68,300 square foot facility to be located on West Evergreen Drive in the Village of Little Chute, Wisconsin (the “Facility”) and operated by GLK Foods, LLC, a Wisconsin limited liability company, to manufacture food products, (ii) acquisition and installation of equipment at the Facility, and (iii) payment of certain professional costs and costs of issuance (collectively, the “Project”), all of which would contribute to the well-being of the Village of Little Chute, Wisconsin; and

WHEREAS, the cost of the Project is presently estimated to exceed \$10,000,000 and the amount proposed to be financed with one or more issues or series of tax-exempt and/or taxable industrial development revenue bonds (the “Bonds”) issued under the Act does not exceed \$10,000,000; and

WHEREAS, it is in the public interest of the Issuer to promote, attract, stimulate, rehabilitate and revitalize commerce, industry and manufacturing, to promote the betterment of the economy of the Issuer; and

WHEREAS, the Borrower has requested that the Issuer now approve an initial resolution (the “Initial Resolution”) providing for the financing of the Project in an amount not to exceed \$10,000,000; and

WHEREAS, the Issuer is a municipality organized and existing under and pursuant to the laws of the State of Wisconsin, and is authorized to enter into revenue agreements with eligible participants with respect to the Project whereby eligible participants agree to cause said Project to be constructed and to pay the Issuer an amount of funds sufficient to provide for the prompt payment when due of the principal and interest on said industrial development revenue bonds.

NOW, THEREFORE, BE IT RESOLVED by the Village Board of the Village of Little Chute, Wisconsin, as follows:

1. Based upon representations of the Borrower, it is the finding and determination of the Village Board that the Project is a qualified “project” within the meaning of the Act and that the Borrower is an “eligible participant” within the meaning of the Act. The Issuer shall:

(a) Finance the Project in an amount not to exceed \$10,000,000; and

(b) Issue industrial development revenue bonds in one or more series of tax-exempt and/or taxable bonds (the “Bond(s)”), in an amount not to exceed \$10,000,000 in order to finance costs of the Project.

2. The aforesaid plan of financing contemplates, and is conditioned upon, the following:

(a) The Bonds shall never constitute an indebtedness of the Issuer within the meaning of any state constitutional provision or statutory limitation;

(b) The Bonds shall not constitute or give rise to a pecuniary liability of the Issuer or a charge against its general credit or taxing powers;

(c) The Project shall be subject to property taxation in the same amount and to the same extent as though the Project were not financed with industrial development revenue bonds;

(d) The Borrower shall find a purchaser for all of the Bonds;

(e) The Village’s out-of-pocket costs, including but not limited to legal fees and Trustee’s fees, in connection with the issuance and sale of the Bonds shall be paid by the Borrower; and

(f) A notice of public hearing required by federal law for purposes of Section 147(f) of the Internal Revenue Code, as amended, shall be published in a newspaper of general circulation in the Village of Little Chute and a public hearing shall be held to provide interested individuals or parties the opportunity to testify as to the Project and the issuance of the Bonds.

3. The aforesaid plan of financing shall not be legally binding upon the Issuer nor be finally implemented unless and until:

(a) The details and mechanics of the same are authorized and approved by a further resolution of the Village Board which shall be solely within the discretion of the Village Board;

(b) The Village Clerk shall cause notice of adoption of this Initial Resolution, in the form attached hereto as Exhibit A, to be published once in a newspaper of general circulation in the Village of Little Chute, and the electors of the Village of Little Chute shall have been given the opportunity to petition for a referendum on the matter of the aforesaid Bond issue, all as required by law;

(c) Either no such petition shall be timely filed or such petition shall have been filed and said referendum shall have approved the Bond issue;

(d) The Village Clerk shall have received an employment impact estimate issued under Section 238.11 of the Wisconsin Statutes;

(e) All documents required to consummate the financing have been duly authorized and delivered; and

(f) The Issuer and the Borrower have resolved all land use and special use issues with respect to the affected property and the Project.

4. Pursuant to the Act, all requirements that the Project be subject to the contracting requirements contained in Section 66.1103 are waived, the Borrower having represented that it is able to negotiate satisfactory arrangements for completing the Project and that the Issuer's interests are not prejudiced thereby.

5. The Village Clerk is directed, following adoption of this Initial Resolution (i) to publish notice of such adoption not less than one time in the official newspaper of the Village of Little Chute, Wisconsin, such notice to be in substantially the form attached hereto as Exhibit A and (ii) to file a copy of this Initial Resolution, together with a statement indicating the date the Notice to Electors was published, with the Wisconsin Economic Development Corporation within twenty (20) days following the date of publication of such notice.

6. This Initial Resolution is an "initial resolution" within the meaning of the Act and official action toward issuance of the Bonds for purposes of Sections 103 and 144 of the Internal Revenue Code of 1986, as amended, and the regulations promulgated thereunder. Furthermore, it is the reasonable expectation of the Issuer that proceeds of the Bonds may be used to reimburse expenditures made on the Project prior to the issuance of the Bonds. The maximum principal amount of debt expected to be issued for the Project on the date hereof is \$10,000,000. This statement of official intent is made pursuant to Treasury Regulations §1.150-2.

Passed and adopted at a regular meeting of the Village Board of the Village of Little Chute, Wisconsin this 19th day of September, 2018.

APPROVED:

Michael Vanden Berg, Village President

ATTEST:

Laurie Decker, Village Clerk

EXHIBIT A

NOTICE TO ELECTORS OF THE VILLAGE OF LITTLE CHUTE, WISCONSIN

TAKE NOTICE that the Village Board of the Village of Little Chute, Wisconsin (the “Issuer”), at a regular meeting held at Village Hall, 108 West Main Street, Little Chute, Wisconsin, on September 19, 2018, adopted an Initial Resolution pursuant to Section 66.1103 of the Wisconsin Statutes, as amended, expressing the intention to issue not to exceed \$10,000,000 of industrial development revenue bonds of the Issuer (the “Bonds”) on behalf of Peter Pickle Properties, LLC, a Wisconsin limited liability company, and/or a related entity, and/or a limited liability entity to be formed (collectively, the “Borrower”). The Borrower desires to complete a project consisting of financing the (i) acquisition of land and construction of an approximately 68,300 square foot facility to be located on West Evergreen Drive in the Village of Little Chute, Wisconsin (the “Facility”) and operated by GLK Foods, LLC, a Wisconsin limited liability company, to manufacture food products, (ii) acquisition and installation of equipment at the Facility, and (iii) payment of certain professional costs and costs of issuance (collectively, the “Project”). The Borrower has represented that the net number of full-time equivalent jobs which the Project is expected to create on the Project site within three years is 60.

Pursuant to the terms of Section 66.1103 of the Wisconsin Statutes, all requirements that the Project be subject to the contracting requirements contained in Section 66.1103 are waived, the Borrower having represented that it is able to negotiate satisfactory arrangements for completing the Project and that the Issuer's interests are not prejudiced thereby.

THE BONDS SHALL NEVER CONSTITUTE AN INDEBTEDNESS OF THE ISSUER, NOR SHALL THE BONDS GIVE RISE TO ANY PECUNIARY LIABILITY OF THE ISSUER, NOR SHALL THE BONDS BE A CHARGE AGAINST THE GENERAL CREDIT OR TAXING POWERS OF THE ISSUER. RATHER, THE BONDS SHALL BE PAYABLE SOLELY FROM THE REVENUES AND OTHER AMOUNTS TO BE DERIVED PURSUANT TO THE REVENUE AGREEMENT RELATING TO SAID PROJECT TO BE ENTERED INTO BETWEEN THE ISSUER AND THE BORROWER.

The Initial Resolution may be inspected in the office of the Village Clerk at 108 West Main Street, Little Chute, Wisconsin, during business hours.

TAKE FURTHER NOTICE THAT THE ELECTORS OF THE VILLAGE OF LITTLE CHUTE MAY PETITION FOR A REFERENDUM ON THE QUESTION OF THE BOND ISSUE. Unless within thirty (30) days from the date of the publication of this Notice a petition signed by not less than five percent (5%) of the registered electors of the Village of Little Chute is filed with the Village Clerk requesting a referendum on the question of the issuance of the Bonds, the Issuer will issue the Bonds without submitting the proposition for the electors' approval. If such petition is filed as aforesaid, then the Bonds shall not be issued until approved by a majority of the electors of the Village of Little Chute voting thereon at a general or special election.

Laurie Decker, Village Clerk
Village of Little Chute, Wisconsin

CERTIFICATION BY VILLAGE CLERK

I, Laurie Decker, duly sworn, hereby certify that I am the duly qualified and acting Village Clerk of the Village of Little Chute, Wisconsin (the "Village"), and as such I have in my possession, or have access to, the complete corporate records of the Village and of its Village Board; that I have carefully compared the transcript attached hereto with the aforesaid records; and that said transcript attached hereto is a true, correct and complete copy of all the records in relation to the adoption of Resolution No. _____ entitled: INITIAL RESOLUTION REGARDING INDUSTRIAL DEVELOPMENT REVENUE BOND FINANCING FOR GLK FOODS, LLC PROJECT

I hereby further certify as follows:

1. Said Initial Resolution was considered for adoption by the Village Board at a meeting held at Village Hall, 108 West Main Street, Little Chute, Wisconsin, at _____ p.m. on September 19, 2018. Said meeting was a _____ (*insert regular or special meeting*) of the Village Board and was held in open session.

2. Said Initial Resolution was on the agenda for said meeting and public notice thereof was given not less than twenty-four (24) hours prior to the commencement of said meeting in compliance with Section 19.84 of the Wisconsin Statutes, including, without limitation, by posting on the bulletin board in the Village Hall, by notice to those news media who have filed a written request for notice of meetings, and by notice to the official newspaper of the Village.

3. Said meeting was called to order by _____, who chaired the meeting. Upon roll, I noted and recorded that the following trustees were present:

_____	_____
_____	_____
_____	_____
_____	_____

and that the following trustees were absent:

_____	_____
_____	_____

I noted and recorded that a quorum was present. Various matters and business were taken up during the course of the meeting without intervention of any closed session. One of the matters taken up was said Initial Resolution, which was introduced, and its adoption was moved by _____ and seconded by _____. Following discussion and after all trustees who desired to do so had expressed their views for or against said Initial Resolution,

the question was called, and upon roll being called and the continued presence of a quorum being noted, the recorded vote was as follows:

AYE:

_____	_____
_____	_____
_____	_____
_____	_____

NAY:

_____	_____
_____	_____

ABSTAINED:

_____	_____
_____	_____

Whereupon the meeting chairperson declared said Initial Resolution adopted, and I so recorded it.

IN WITNESS WHEREOF, I have signed my name and affixed the seal of the Village hereto on this 19th day of September, 2018.

[SEAL]

Laurie Decker, Village Clerk

VILLAGE OF LITTLE CHUTE

RESOLUTION NO. 29, SERIES OF 2018

WHEREAS, PBJ Holdings, LLC and The Griffin Company, as owners of Parcels #260439900, 260440100, 260440101, 260440200, 260440201, 260440300 & 260440400 presented a Certified Survey Map to the Village of Little Chute Board of Trustees as prepared by David M. Schmalz, a registered land surveyor; and

WHEREAS, the Village of Little Chute Planning Commission has recommended in favor of adoption of said Certified Survey Map; and

WHEREAS, a majority of the full Village Board find that the attached Certified Survey Map is found to be in the public interest.

NOW, THEREFORE, BE IT RESOLVED, by the Village Board of Trustees as follows:

1. That the Certified Survey Map attached hereto (photocopy), be and the same is hereby approved; and
2. That the Village President, Village Clerk, and Finance Director, upon full payment of, if applicable, all fees, taxes, and special assessments are directed to execute signatures on behalf of the Village of Little Chute upon the Certified Survey Map documents as required.

Date introduced, approved and adopted: September 19, 2018

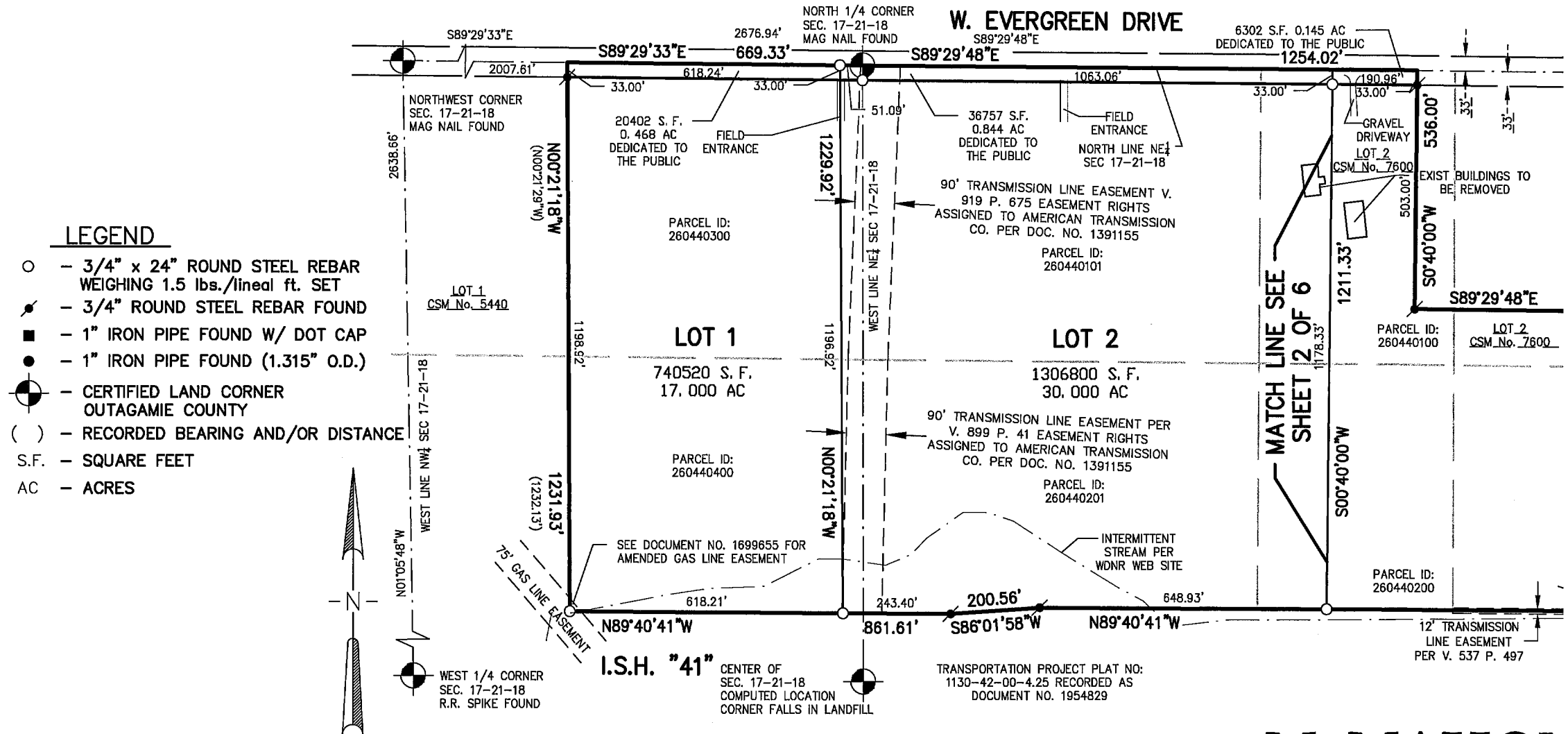
VILLAGE OF LITTLE CHUTE:

By: _____
Michael R. Vanden Berg, Village President

Attest: _____
Laurie Decker, Village Clerk

SHEET 1 OF 6

ALL OF LOT 2 OF CERTIFIED SURVEY MAP NO. 7600 AS RECORDED IN VOLUME 46 OF MAPS ON PAGE 7600 AS DOCUMENT NO. 2142581, AND PART OF THE NORTHEAST 1/4 AND THE NORTHWEST 1/4 OF THE NORTHEAST 1/4 AND THE NORTHEAST 1/4 OF THE NORTHWEST 1/4 OF SECTION 17, TOWNSHIP 21 NORTH, RANGE 18 EAST, VILLAGE OF LITTLE CHUTE, OUTAGAMIE COUNTY, WISCONSIN



BEARINGS ARE REFERENCED TO THE NORTH LINE OF THE
NORTHEAST 1/4 OF SECTION 17, TOWNSHIP 21 NORTH, RANGE
18 EAST, WHICH BEARS S89°29'48"W PER THE WISCONSIN
COUNTY COORDINATE SYSTEM AS PUBLISHED FOR OUTAGAMIE
COUNTY.

300 150 0 300

SCALE - FEET

SEE THE VILLAGE OF LITTLE CHUTE
STORMWATER MANGEMENT PLAN
FOR FRENCH ROAD PAGE 9 FOR
BERM GRADES NORTH I.S.H. "41"

DRAFTED BY: MARTY J. ABING

d:\projects\c0923\91800613\CADD\Civil3D\Survey Documents\CSM\3--Lot CSM.dwg, sheet 1, Plot Date: 7/23/2018 2:12 PM, xrefs: (plss_section_co_outagamie_2013_01_07, parcels_co-outagamie_2017_02, ch evergreen dr csm comps dew, navigable_streams)

www.mcmgrp.com

McMAHON
ENGINEERS \ ARCHITECTS

1445 McMAHON DRIVE NEENAH, WI 54956
Mailing: P.O.BOX 1025 NEENAH, WI 54957-1025
Tel: (920) 751-4200 Fax: (920) 751-4284

ALL OF LOT 2 OF CERTIFIED SURVEY MAP NO. 7600 AS RECORDED IN VOLUME 46 OF MAPS ON PAGE 7600 AS DOCUMENT NO. 2142581, AND PART OF THE NORTHEAST 1/4 AND THE NORTHWEST 1/4 OF THE NORTHEAST 1/4 AND THE NORTHEAST 1/4 OF THE NORTHWEST 1/4 OF SECTION 17, TOWNSHIP 21 NORTH, RANGE 18 EAST, VILLAGE OF LITTLE CHUTE, OUTAGAMIE COUNTY, WISCONSIN

SURVEYOR'S CERTIFICATE

I, David M. Schmalz, Wisconsin Professional Land Surveyor S-1284, certify that I have surveyed, divided and mapped all of Lot 2 of Certified Survey Map No. 7600 as recorded in Volume 46 of Maps on Page 7600 as Document no. 2142581, and part of the Northeast 1/4 and the Northwest 1/4 of the Northeast 1/4 and the Northeast 1/4 of the Northwest 1/4 of Section 17, Township 21 North, Range 18 East, Village of Little Chute, Outagamie County, Wisconsin containing 3,113,593 Square feet (71.478 acres) of land and described as follows

Beginning at the North $\frac{1}{4}$ corner of said Section 17; Thence S89°29'48"E, 1254.02 feet along the North line of the Northeast $\frac{1}{4}$ of said Section 17 to the Northwest corner of Lot 1 of said Certified Survey Map; Thence S00°40'00"W, 536.00 feet along the West line of said Lot 1 to the Southwest corner thereof; Thence S89°29'48"E, 865.50 feet along the South line of said Lot 1 to the Southeast corner thereof; Thence N00°40'00"E, 327.30 feet along the East line of said Lot 1 to the Southwest corner of Lot 1 of Certified Survey Map No. 5567 as recorded in Volume 32 of Maps on Page 5567 Document No. 1744497; Thence S89°29'48"E (recorded as S89°29'38"E & S89°29'31"E), 300.58 feet along the South line of said Lot 1 of Certified Survey Map No. 5567 and it's Easterly extension to the Northwest corner of Lot 2 of Certified Survey Map No. 509 as recorded in Volume 3 of maps on Page 509 as Document No. 947607; Thence S00°40'00"W (recorded as S00°39'54"W & South), 205.65 feet along the West line of said Lot 2 to the Southwest corner thereof; Thence S89°29'48"E (recorded as S89°49'50"E), 211.82 feet along the South line of said Lot 1 to the Southeast corner thereof on the West Right-of-Way line of Holland Road; Thence S00°40'00"W (recorded as S00°39'54"W), 86.32 feet along said West Right-of-Way line to the Westerly Right-of-Way line of Pograd Road; Thence S53°05'54"W (recorded as S53°05'45"W), 82.01 feet along said Westerly Right-of-Way line; Thence S00°40'00"W, (recorded as S00°39'54"W), 113.68 feet along said Westerly Right-of-Way line; Thence N89°35'00"W, 200.39 feet to the Northeast corner of Lot 1 of Certified Survey Map No. 2602 recorded in Volume 14 of Maps on Page 2602 as Document No. 1196443; Thence N89°27'13"W (recorded as N89°29'45"W), 261.82 feet along the North line of said Lot 1 to the Northwest corner thereof; Thence S00°40'00"W, 478.38 feet along the West line of said Lot 1 to the Southwest corner thereof; Thence S89°38'50"E, 357.64 feet along the South line of said Lot 1; Thence N42°50'44"E, 155.76 feet along the South line of said Lot 1 to the Southeast corner thereof and the Westerly Right-of-Way line of Pograd Road; Thence S00°40'00" W, 69.76 feet along said Westerly Right-of-Way line to the North Right-of-Way line of I.S.H "41"; Thence S66°49'13"W, 276.40 feet along said North Right-of-Way line; Thence N89°40'41"W, 1900.00 feet along said North Right-of-Way line; Thence S86°01'58"W, 200.56 feet along said North Right-of-Way line; Thence N89°40'41"W, 861.61 feet along said North Right-of-Way line to the Southeast corner of Lot 1 of Certified Survey Map No. 5440 as recorded in Volume 31 of Maps on Page 5440 as Document No 1723422; Thence N00°21'18"W, 1231.93 feet along the East line of said Lot 1 of Certified Survey Map No. 5440 to the Northeast corner thereof, Thence S89°29'33"E, 669.33 feet along the North line of the Northwest $\frac{1}{4}$ of said Section 17 to the Point of Beginning.

That I have made this survey by the direction of the Owners of said Land.

I further certify that this map is a correct representation of the exterior boundary lines of the land surveyed and the division of that land, and that I have complied with section 236.34 of the Wisconsin Statutes and section 42-64 of the Village of Little Chute Subdivision Ordinance in surveying, dividing and mapping the same.

Given under my hand and seal this ____ day of _____ 20____.

David M. Schmalz, Professional WI Land Surveyor S-1284

SHEET 4 OF 6

ALL OF LOT 2 OF CERTIFIED SURVEY MAP NO. 7600 AS RECORDED IN VOLUME 46 OF MAPS
ON PAGE 7600 AS DOCUMENT NO. 2142581, AND PART OF THE NORTHEAST 1/4 AND THE
NORTHWEST 1/4 OF THE NORTHEAST 1/4 AND THE NORTHEAST 1/4 OF THE NORTHWEST 1/4
OF SECTION 17, TOWNSHIP 21 NORTH, RANGE 18 EAST, VILLAGE OF LITTLE CHUTE,
OUTAGAMIE COUNTY, WISCONSIN

VILLAGE BOARD APPROVAL

Approved by the Village of Little Chute, Outagamie County, Wisconsin, by the Village Board on the _____ day of _____, 20____.

**Village President
Mike Vanden Berg**

Date _____

Village Clerk
Laurie Decker

Date _____

CERTIFICATE OF VILLAGE FINANCE DIRECTOR:

I, _____, being the duly elected, qualified and acting Finance Director, do hereby certify that in accordance with the records in my office there are no un-paid taxes or un-paid special assessments on any of the lands included in this Certified Survey Map as of: _____ affecting the lands.

Finance Director
Valerie Clarizio

Date _____

CERTIFICATE OF COUNTY TREASURER:

I, being the duly elected, qualified and acting Treasurer, do hereby certify that in accordance with the records in my office there are no un-paid taxes or un-paid special assessments on any of the lands included in this Certified Survey Map as of: _____ affecting the lands.

County Treasurer
Trenten J. Woelfel

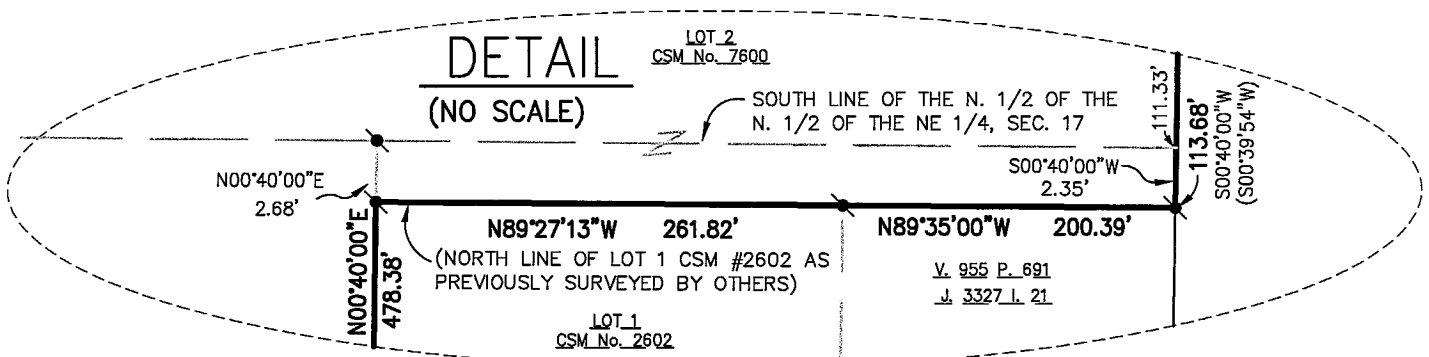
Date _____

NOTES

-THIS CSM IS PART OF PARCEL ID 26-0-4398-00 AND ALL OF PARCEL ID 26-0-4399-00, 26-0-4401-00, 26-0-4401-01, 26-0-4402-00, 26-0-4402-01, 26-0-4403-00 & 26-0-4404-00

—THE PROPERTY OWNER OF RECORD IS PBJ HOLDINGS, LLC 45%, THE GRIFFIN COMPANY OF LITTLE CHUTE, INC. 45% & DAVID A. WITTMAN 10%

-THIS PROPERTY IS CONTAINED WHOLLY WITHIN LANDS DESCRIBED IN DOCUMENT No. 1866677.



CERTIFIED SURVEY MAP NO. _____

SHEET 5 OF 6

ALL OF LOT 2 OF CERTIFIED SURVEY MAP NO. 7600 AS RECORDED IN VOLUME 46 OF MAPS
ON PAGE 7600 AS DOCUMENT NO. 2142581, AND PART OF THE NORTHEAST 1/4 AND THE
NORTHWEST 1/4 OF THE NORTHEAST 1/4 AND THE NORTHEAST 1/4 OF THE NORTHWEST 1/4
OF SECTION 17, TOWNSHIP 21 NORTH, RANGE 18 EAST, VILLAGE OF LITTLE CHUTE,
OUTAGAMIE COUNTY, WISCONSIN

OWNER's CERTIFICATE

PBJ Holdings, LLC, a Wisconsin Limited Liability Company As Owner(s), I/We hereby certify that I/we
caused the land described on this Certified Survey Map to be surveyed, divided, mapped and
dedicated as represented on this Certified Survey Map. I/We also certify that this Certified Survey
Map is required by s. 236.34 of the Wisconsin Statutes to be submitted to the following for
approval.

Village of Little Chute

Dated this _____ day of _____, 20____.

Authorized Signature Title
PBJ Holdings LLC, a Wisconsin Limited Liability Company, a 45% interest

Printed Name

State of Wisconsin)
_____)ss
_____County)

Personally appeared before me on the _____ day of _____, 20____, the above
named person(s) to me known to be the person(s) who executed the foregoing instrument, and
acknowledged the same.

Notary Public

_____ County, _____

My commission expires_____

OWNER's CERTIFICATE

The Griffin Company of Little Chute, Inc., a Wisconsin Corporation As Owner(s), I/We hereby certify
that I/we caused the land described on this Certified Survey Map to be surveyed, divided, mapped
and dedicated as represented on this Certified Survey Map. I/We also certify that this Certified Survey
Map is required by s. 236.34 of the Wisconsin Statutes to be submitted to the following for approval.

Village of Little Chute

Dated this _____ day of _____, 20____.

Authorized Signature Title
The Griffin Company of Little Chute, Inc., a Wisconsin Corporation, a 45% interest

Printed Name

State of Wisconsin)
_____)ss
_____County)

Personally appeared before me on the _____ day of _____, 20____, the above
named person(s) to me known to be the person(s) who executed the foregoing instrument, and
acknowledged the same.

Notary Public

_____ County, _____

My commission expires_____

CERTIFIED SURVEY MAP NO. _____

SHEET 6 OF 6

ALL OF LOT 2 OF CERTIFIED SURVEY MAP NO. 7600 AS RECORDED IN VOLUME 46 OF MAPS
ON PAGE 7600 AS DOCUMENT NO. 2142581, AND PART OF THE NORTHEAST 1/4 AND THE
NORTHWEST 1/4 OF THE NORTHEAST 1/4 AND THE NORTHEAST 1/4 OF THE NORTHWEST 1/4
OF SECTION 17, TOWNSHIP 21 NORTH, RANGE 18 EAST, VILLAGE OF LITTLE CHUTE,
OUTAGAMIE COUNTY, WISCONSIN

OWNER'S CERTIFICATE

The David A. Wittman As Owner, I hereby certify that I caused the land described on this Certified Survey Map to be surveyed, divided, mapped and dedicated as represented on this Certified Survey Map. I also certify that this Certified Survey Map is required by s. 236.34 of the Wisconsin Statutes to be submitted to the following for approval.

Village of Little Chute

Dated this _____ day of _____, 20____.

Authorized Signature Title
David A. Wittman, a 10% interest

State of Wisconsin)
_____)ss
_____County)

Personally appeared before me on the _____ day of _____, 20____, the above named person to me known to be the person who executed the foregoing instrument, and acknowledged the same.

Notary Public

_____ County, _____

My commission expires_____

CONSENT OF MORTGAGEE:

Associated Bank, NA, a duly organized and existing under and by virtue of the laws of the State of Wisconsin, mortgagee of the above described land does hereby consent to the surveying, dividing, mapping and dedication of the land described on this certified survey map and does hereby consent to the certificate of PBJ Holdings, LLC, a Wisconsin Limited Liability Company and The Griffin Company of Little Chute, Inc., a Wisconsin Corporation, as Owners.

WITNESS the hand and seal of said mortgagee this _____ day of _____, 20____.

In the Presence of:

Authorized Signature

Authorized Signature

Print Name

Print Name

STATE OF WISCONSIN)ss
COUNTY OF _____

Personally came before me this _____ day of _____, 20____, the above named persons to me to be the persons who executed the foregoing instrument and acknowledged the same.

Notary Public

_____ County, _____

My Commission Expires:_____

VILLAGE OF LITTLE CHUTE

RESOLUTION NO. 30, SERIES OF 2018

WHEREAS, The Village of Little Chute, as owners of Parcels #260017604 and 260433400 presented a Certified Survey Map to the Village of Little Chute Board of Trustees as prepared by Michael T. McClone, a registered land surveyor; and

WHEREAS, the Village of Little Chute Planning Commission has recommended in favor of adoption of said Certified Survey Map; and

WHEREAS, a majority of the full Village Board find that the attached Certified Survey Map is found to be in the public interest.

NOW, THEREFORE, BE IT RESOLVED, by the Village Board of Trustees as follows:

1. That the Certified Survey Map attached hereto (photocopy), be and the same is hereby approved; and
2. That the Village President, Village Clerk, and Finance Director, upon full payment of, if applicable, all fees, taxes, and special assessments are directed to execute signatures on behalf of the Village of Little Chute upon the Certified Survey Map documents as required.

Date introduced, approved and adopted: September 19, 2018

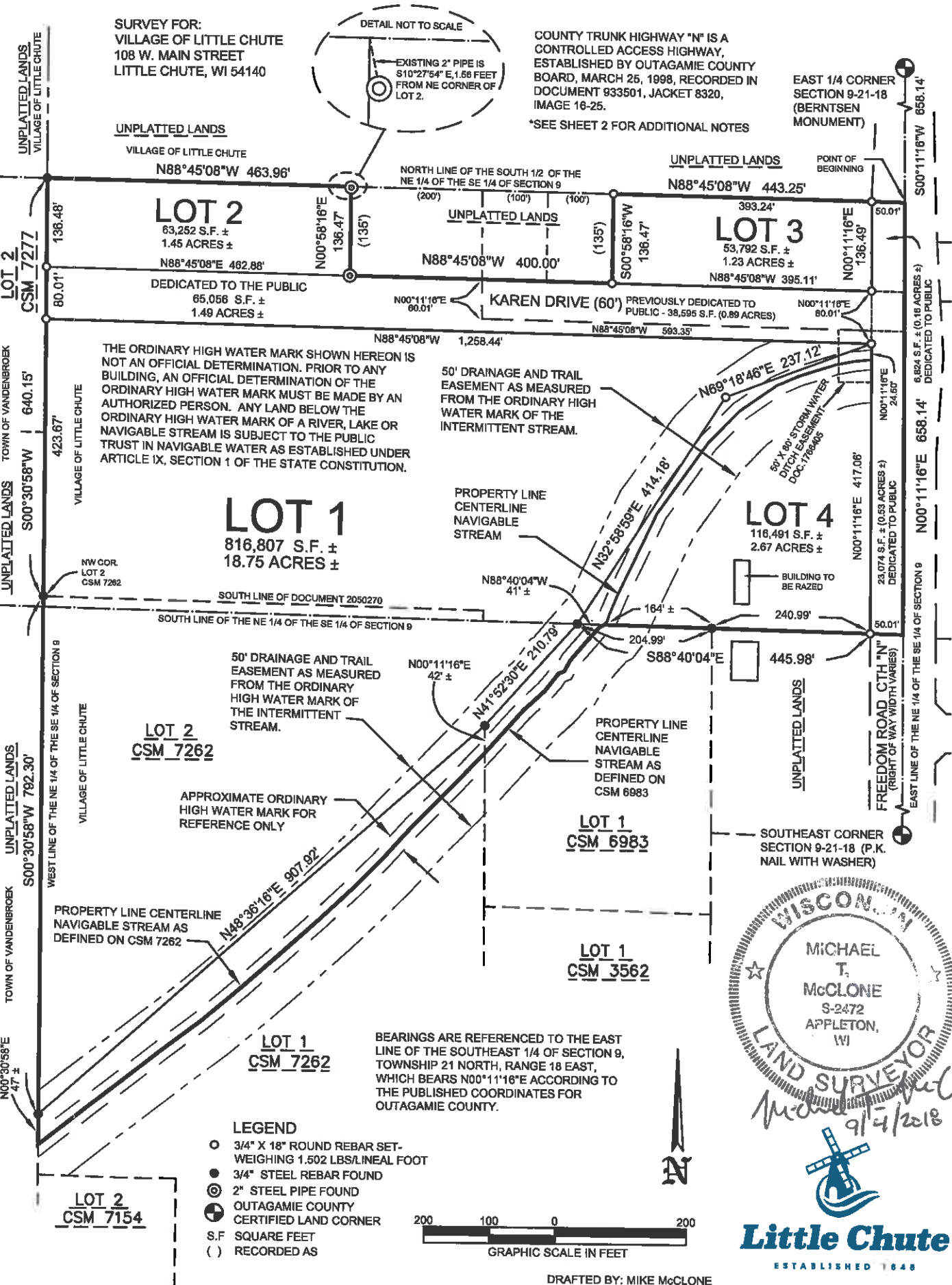
VILLAGE OF LITTLE CHUTE:

By: _____
Michael R. Vanden Berg, Village President

Attest: _____
Laurie Decker, Village Clerk

CERTIFIED SURVEY MAP No. SHEET 1 OF 3

PART OF THE SOUTH 1/2 OF THE NORTHEAST 1/4 OF THE SOUTHEAST 1/4, AND ALL OF LOT 2 OF CERTIFIED SURVEY MAP 7262 AS RECORDED IN VOLUME 43 OF MAPS ON PAGE 7262 AS DOCUMENT 2085589, BEING A PART OF THE NORTHEAST 1/4 OF THE SOUTHEAST 1/4, AND A PART OF THE SOUTHEAST 1/4 OF THE SOUTHEAST 1/4, SECTION 9, TOWNSHIP 21 NORTH, RANGE 18 EAST, VILLAGE OF LITTLE CHUTE, OUTAGAMIE COUNY, WISCONSIN.



CERTIFIED SURVEY MAP No. _____ SHEET 2 OF 3

PART OF THE SOUTH 1/2 OF THE NORTHEAST 1/4 OF THE SOUTHEAST 1/4, AND ALL OF LOT 2 OF CERTIFIED SURVEY MAP 7262 AS RECORDED IN VOLUME 43 OF MAPS ON PAGE 7262 AS DOCUMENT 2085589, BEING A PART OF THE NORTHEAST 1/4 OF THE SOUTHEAST 1/4, AND A PART OF THE SOUTHEAST 1/4 OF THE SOUTHEAST 1/4, SECTION 9, TOWNSHIP 21 NORTH, RANGE 18 EAST, VILLAGE OF LITTLE CHUTE, OUTAGAMIE COUNTY, WISCONSIN.

SURVEYOR'S CERTIFICATE

I, Michael T. McClone, Wisconsin Professional Land Surveyor 2472, certify that I have surveyed, divided, combined and mapped all of Lot 2, Certified Survey Map 7262, and part of the South 1/2 of the Northeast 1/4 of the Southeast 1/4, Section 9, Township 21 North, Range 18 East, Village of Little Chute, Outagamie County, Wisconsin. Bounded and described as follows:

Commencing at the East 1/4 corner of said Section 9; Thence S00°11'16"W, along the East line of the Northeast 1/4 of the Southeast 1/4 of said Section 9, 658.14 feet to the Point of Beginning; Thence N88°45'08"W, along the North line of the South 1/2 of said Northeast 1/4, 50.01 feet, to the West right of way of Freedom Road; Thence continuing N88°45'08"W along said North line, 393.24 feet; Thence S00°58'16"W, 136.47 feet, to the North right of way of Karen Drive; Thence N88°45'08"W, along said North right of way, 400.00 feet to an existing 2" pipe; Thence N00°58'16"E, 136.47 feet to said North line, Thence N88°45'08"W, along said North line, 463.96 feet to the East line of Lot 2, Certified Survey Map 7277; Thence S00°30'58"W, along said East line, 640.15 feet to the Northwest corner of Lot 2, Certified Survey Map 7262; Thence continuing S00°30'58"W, along the West line of said Lot 2, CSM 7262, 792.30 feet to the start of a meander line of the centerline of an intermittent navigable stream, as shown on said CSM 7262, said point bears N00°30'58"E a distance of 47 feet, more or less, from said centerline; Thence N48°36'16"E, along said meander line, 907.92 feet to a meander corner that bears N00°11'16"E, being an extension of the West line of Lot 1, Certified Survey Map 6983, a distance of 42 feet, more or less, from said centerline; Thence N41°52'30"E, 210.79 feet to a meander corner on the South line of the Northeast 1/4 of the Southeast 1/4 of Section 9, which bears N88°40'04"W a distance of 41 feet, more or less, from said centerline; Thence S88°40'04"E, along said South line, 445.98 feet to the West right of way of Freedom Road; Thence continuing S88°40'04"E along said South line, 50.01 feet to the East line of the Northeast 1/4 of the Southeast 1/4 of said section 9; Thence N00°11'16"E, along said East line, 658.14 feet to the Point of Beginning. Including all of that land lying between the above described meander line and the centerline of the intermittent navigable stream bounded by the extension of the respective lines of the above described parcel to said centerline, reserving the Westerly portion of Freedom Road as presently used for road purposes. Described land contains 1,183,894 Square Feet (27.18 acres), more or less. Subject to all easements and restrictions of record.

I further certify that I have made this survey under the direction of the Owner(s) of said land and that this map is a correct representation of the exterior boundary lines of the land surveyed, divided and combined, and that I have fully complied with Section 236.34 of the Wisconsin Statutes and the Village of Little Chute Subdivision Ordinance.

Michael T. McClone 9/4/2018
Michael T. McClone, PLS- 2472 Date
Village of Little Chute
108 W. Main Street
Little Chute, WI 54140
(920) 423-3862



NOTES:

- THIS CSM INCLUDES THE FOLLOWING TAX PARCELS: 260-0176-04 AND 260-4334-00.
- THE PROPERTY OWNER OF RECORD IS THE VILLAGE OF LITTLE CHUTE.
- THIS PROPERTY IS CONTAINED WHOLLY WITHIN LANDS DESCRIBED IN DOCUMENTS 2050270 AND 2085589.
- FREEDOM ROAD (CTH "N") RECORD DOCUMENTS: VOLUME 502, PAGE 111; JACKET 17347, IMAGE 38; OMNNI ROW PLAT, DATE 1/24/1996
- KAREN DRIVE RECORD DOCUMENTS: VOLUME 652, PAGE 353; TOWN OF VANDENBROEK RESOLUTION, DATE 9-8-1964
- PRIOR TO CONSTRUCTION, CONTACT WISCONSIN DEPARTMENT OF NATURAL RESOURCES TO DETERMINE NAVIGABILITY OF INTERMITTENT WATERWAY AND LOCATION OF ORDINARY HIGH WATER. FUTURE DEVELOPMENT OF LOTS 1 AND 4 MAY REQUIRE A WETLAND DELINEATION DUE TO PRESENCE OF HYDRAULIC SOILS.

CERTIFIED SURVEY MAP No. _____ SHEET 3 OF 3

PART OF THE SOUTH 1/2 OF THE NORTHEAST 1/4 OF THE SOUTHEAST 1/4, AND ALL OF LOT 2 OF CERTIFIED SURVEY MAP 7262 AS RECORDED IN VOLUME 43 OF MAPS ON PAGE 7262 AS DOCUMENT 2085589, BEING A PART OF THE NORTHEAST 1/4 OF THE SOUTHEAST 1/4, AND A PART OF THE SOUTHEAST 1/4 OF THE SOUTHEAST 1/4, SECTION 9, TOWNSHIP 21 NORTH, RANGE 18 EAST, VILLAGE OF LITTLE CHUTE, OUTAGAMIE COUNTY, WISCONSIN.

TREASURER'S CERTIFICATE

I/We hereby certify that there are no unpaid taxes or special assessments on any of the lands included in this Certified Survey Map.

Village Treasurer _____ Date _____ County Treasurer _____ Date _____

OWNER'S CERTIFICATE

Village of Little Chute, as Owner, I hereby certify that I have caused the land described on this map to be surveyed, divided, combined, mapped and dedicated as represented on this Certified Survey Map. I further certify that this Certified Survey Map is required to be submitted to the following for approval.

Village of Little Chute

Michael R. Vanden Berg
Village President

State of Wisconsin)
ss)
Outagamie County)

Personally appeared before me on the _____ day of _____
20____, the above named persons to me known to be the persons who
executed the foregoing instrument, and acknowledged the same.

Notary Public

_____ County, Wisconsin.

My commission expires: _____

Village Board Approval

Approved by the Village of Little Chute, Outagamie County, Wisconsin, by the Village Board on the _____ day of _____, 2018.

Michael R. Vanden Berg
Village President

Laurie Decker
Village Clerk



VILLAGE OF LITTLE CHUTE

RESOLUTION NO. 31, SERIES OF 2018

WHEREAS, Helen Altergott Family Corporation, as owners of Parcel #146260298700 presented a Certified Survey Map to the Village of Little Chute Board of Trustees as prepared by David M. Schmalz, a registered land surveyor; and

WHEREAS, the Village of Little Chute Planning Commission has recommended in favor of adoption of said Certified Survey Map; and

WHEREAS, a majority of the full Village Board find that the attached Certified Survey Map is found to be in the public interest.

NOW, THEREFORE, BE IT RESOLVED, by the Village Board of Trustees as follows:

1. That the Certified Survey Map attached hereto (photocopy), be and the same is hereby approved; and
2. That the Village President, Village Clerk, and Finance Director, upon full payment of, if applicable, all fees, taxes, and special assessments are directed to execute signatures on behalf of the Village of Little Chute upon the Certified Survey Map documents as required.

Date introduced, approved and adopted: September 19, 2018

VILLAGE OF LITTLE CHUTE:

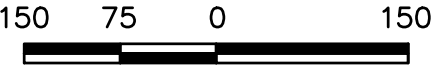
By: _____
Michael R. Vanden Berg, Village President

Attest: _____
Laurie Decker, Village Clerk

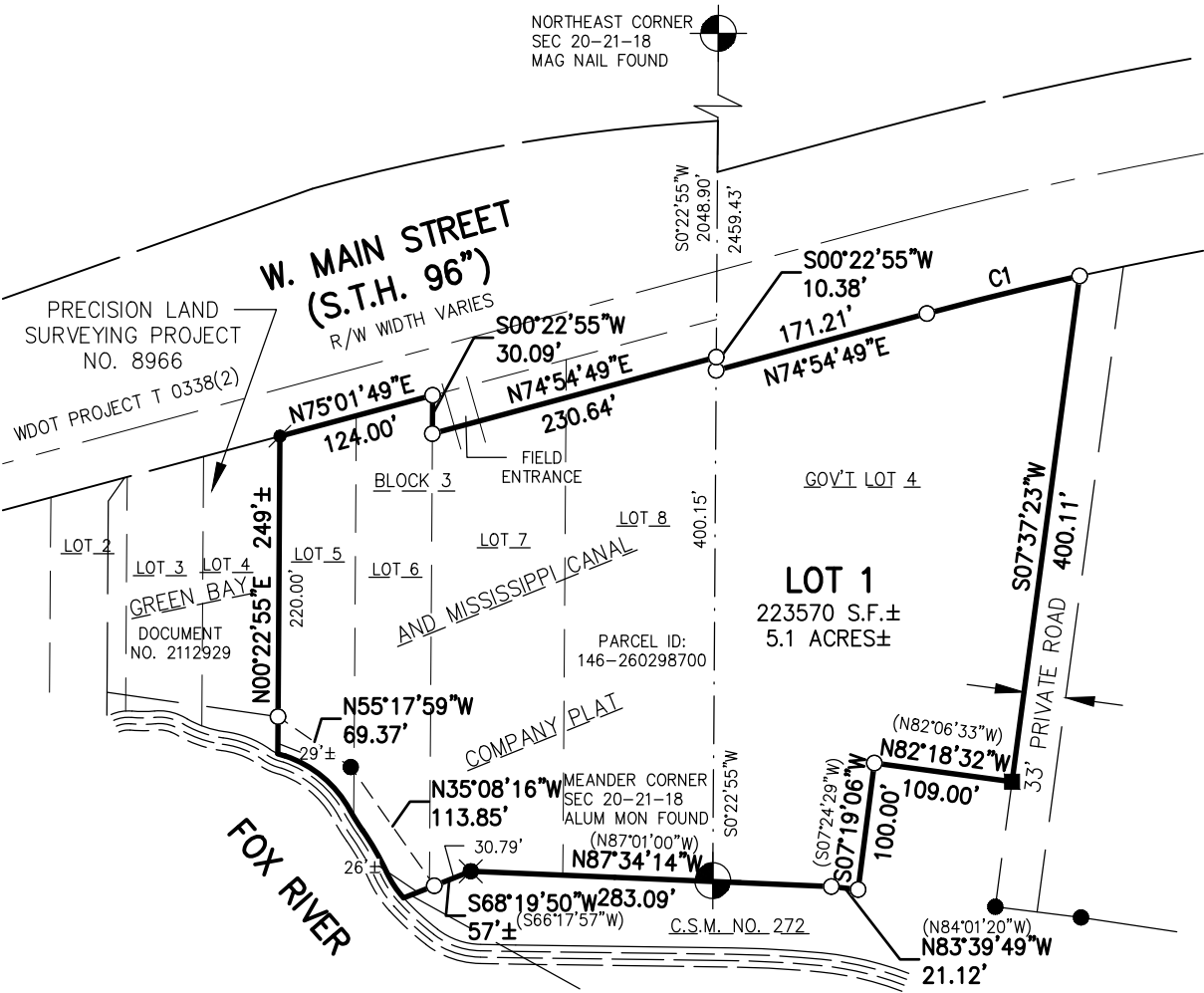
CERTIFIED SURVEY MAP NO. _____ SHEET 1 OF 3
ALL OF LOTS 5 & 6 AND PART OF LOTS 7 & 8, BLOCK 3, GREEN BAY AND MISSISSIPPI CANAL COMPANY PLAT LOCATED
IN GOVERNMENT LOT 1 IN SECTION 20, AND PART OF GOVERNMENT LOT 4 IN SECTION 21, ALL IN TOWNSHIP 21 NORTH,
RANGE 18 EAST, VILLAGE OF LITTLE CHUTE, OUTAGAMIE COUNTY, WISCONSIN

- LEGEND**
- - 3/4" x 24" ROUND STEEL REBAR WEIGHING 1.5 lbs./lineal ft. SET
 - - 3/4" ROUND STEEL REBAR FOUND
 - ⊙ - CAPPED IRON MONUMENT FOUND
 - - STONE W/ CUT "X" FOUND
 - - 1" IRON PIPE FOUND (1.315" O.D.)
 - ⊙ - CERTIFIED LAND CORNER OUTAGAMIE COUNTY
 - () - RECORDED BEARING AND/OR DISTANCE
 - S.F. - SQUARE FEET

BEARINGS ARE REFERENCED TO THE EAST LINE OF THE NORTHEAST 1/4 OF SECTION 20, TOWNSHIP 21 NORTH, RANGE 18 EAST, WHICH BEARS N00°22'55"E PER THE WISCONSIN COUNTY COORDINATE SYSTEM AS PUBLISHED FOR OUTAGAMIE COUNTY.



SCALE — FEET



Curve Table					
Curve #	Length	Radius	Delta	Chord Direction	Chord Length
C1	123.38'	2789.93'	2°32'02"	N76°10'51"E	123.37'

DRAFTED BY: MARTY J. ABING

McMAHON
ENGINEERS ARCHITECTS

1445 McMAHON DRIVE NEENAH, WI 54956
Mailing: P.O.BOX 1025 NEENAH, WI 54957-1025
Tel: (920) 751-4200 Fax: (920) 751-4284
www.mcmgrp.com

ALL OF LOTS 5 & 6 AND PART OF LOTS 7 & 8, BLOCK 3, GREEN BAY AND MISSISSIPPI
CANAL COMPANY PLAT LOCATED IN GOVERNMENT LOT 1 IN SECTION 20, AND PART OF
GOVERNMENT LOT 4 IN SECTION 21, ALL IN TOWNSHIP 21 NORTH, RANGE 18 EAST, VILLAGE
OF LITTLE CHUTE, OUTAGAMIE COUNTY, WISCONSIN

SURVEYOR'S CERTIFICATE

I, David M. Schmalz, Wisconsin Professional Land Surveyor S-1284, certify that I have surveyed, divided and mapped all of Lots 5 & 6 and part of Lots 7 & 8, Block 3, Green Bay and Mississippi Canal Company plat located in Government Lot 1 in Section 20, and part of Government Lot 4 in Section 21, Township 21 North, Range 18 East, Village of Little Chute, Outagamie County, Wisconsin containing 223,570 Square feet (5.1 acres) more or less of land and described as follows

Beginning at the Northeast corner of said Section 20; Thence S00°22'55"W, 2048.90 feet along the East line of the Northeast $\frac{1}{4}$ of said Section 20 to the Point of Beginning; Thence continue S00°22'55"W, 10.38 feet along said East line to the South right-of-way line of W. Main Street (S.T.H. "96"); Thence N74°54'49"E, 171.21 feet along said South right-of-way line to the start of a 2789.93 foot radius curve to the right; Thence 123.38 feet along the arc of said curve and said South right-of-way line with a chord distance of 123.37 feet which bears N76°10'51"E; Thence S07°37'23"W, 400.11 feet to a point on the North line of Certified Survey Map No. 272 as recorded in Volume 2 of Maps on Page 272 Document No. 805716; Thence N82°18'32"W (recorded as N82°06'35"W), 109.00 feet along said North line; Thence S07°19'06"W (recorded as S07°24'29"W), 100.00 feet along said North line; Thence N83°39'49"W (recorded as N84°01'20"W), 21.12 feet along said North line; Thence N87°34'14"W (recorded as N87°01'00"W), 283.09 feet along said North line; Thence S68°19'50"W (recorded as S66°17'57"W), 30.79 feet along said North line to the start of a meander line of the Fox River being N68°19'50"E 26 feet more or less from the shoreline; Thence N35°08'16"W, 113.85 feet along said meander line; Thence N55°17'59"W, 69.37 feet to the termini point of said meander line being N00°22'55"E, 29 feet more or less from the shoreline and to the West line of said Lot 5; Thence N00°22'55"E, 220.00 feet along the West line of said Lot 5 to the Northwest corner thereof; Thence N75°01'49"E, 124.00 feet along the North line of said Lots 5 & 6 to the Northeast corner of said Lot 6; Thence S00°22'55"W, 30.09 feet along the East line of said Lot 6 to the South right-of-way line of W. Main Street (S.T.H. "96"); Thence N74°54'49"E, 230.64 feet along said South right-of-way line of W. Main Street (S.T.H. "96") to the Point of Beginning.

That I have made this survey by the direction of the Owners of said Land.

I further certify that this map is a correct representation of the exterior boundary lines of the land surveyed and the division of that land, and that I have complied with section 236.34 of the Wisconsin Statutes and section 42-64 of the Village of Little Chute Subdivision Ordinance in surveying, dividing and mapping the same.

Given under my hand and seal this _____ day of _____, 20____.

David M. Schmalz, Professional WI Land Surveyor S-1284

ALL OF LOTS 5 & 6 AND PART OF LOTS 7 & 8, BLOCK 3, GREEN BAY AND MISSISSIPPI
CANAL COMPANY PLAT LOCATED IN GOVERNMENT LOT 1 IN SECTION 20, AND PART OF
GOVERNMENT LOT 4 IN SECTION 21, ALL IN TOWNSHIP 21 NORTH, RANGE 18 EAST, VILLAGE
OF LITTLE CHUTE, OUTAGAMIE COUNTY, WISCONSIN

OWNER’S CERTIFICATE

Helen Altergott Family Corporation, a domestic Wisconsin corporation As Owner(s), I/We hereby
certify that I/we caused the land described on this Certified Survey Map to be surveyed, divided and
mapped as represented on this Certified Survey Map. I/We also certify that this Certified Survey Map
is required by s. 236.34 of the Wisconsin Statutes to be submitted to the following for approval.

Village of Little Chute

Dated this _____ day of _____, 20____.

Authorized Signature Title
Helen Altergott Family Corporation, a domestic Wisconsin corporation

Printed Name

State of Wisconsin)
_____ County) ss

Personally appeared before me on the _____ day of _____, 20____, the above
named person(s) to me known to be the person(s) who executed the foregoing instrument, and
acknowledged the same.

Notary Public
_____ County, _____
My commission expires_____

VILLAGE BOARD APPROVAL

Approved by the Village of Little Chute, Outagamie County, Wisconsin, by the Village Board
on the _____ day of _____, 20____.

Village President Date
Mike Vanden Berg

Village Clerk Date
Laurie Decker

NOTES

- THIS CSM IS ALL OF PARCEL ID 146–26–0–2987–00
- THE PROPERTY OWNER OF RECORD IS HELEN ALTERGOTT FAMILY CORPORATION, A DOMESTIC WISCONSIN CORPORATION
- THIS PROPERTY IS CONTAINED WHOLLY WITHIN LANDS DESCRIBED IN DOCUMENT No. 1212643.

Village of Little Chute
REQUEST FOR VILLAGE BOARD CONSIDERATION

ITEM DESCRIPTION: Fox Valley Metro Police Job Descriptions
PREPARED BY: Chief Daniel M. Meister
REPORT DATE: September 14, 2018
ADMINISTRATOR'S REVIEW/COMMENTS:
EXPLANATION: <p>As part of our organizational planning and routine review of the operations of our department, I have identified some operational procedures that I believe should be changed for us to operate and deliver services more efficiently.</p> <p>The three (3) police clerk positions do not have a formal, direct reporting person that they go to for guidance and direction regarding their work activities. They may seek and/or receive direction from three or four command staff members – depending on who is available at the time. This can cause a conflict of orders and communication issues if they are receiving direction from multiple sources. I have proposed that an office manager position be created. This position would directly supervise and manage the clerical staff.</p> <p>We currently have a full-time clerical vacancy and I would like to fill that vacancy by hiring for this new position – Administrative Manager. I would post the position internally and within both villages. There is already a pay scale for this position. It is under what used to be titled as the Administrative Assistant. Based on our current, clerk's pay rates and the duties and responsibilities of the new position, I would propose we start the new Administrative Manager at step 8 which is \$46,025/year. This would be a salaried, exempt position as well. The job description for this position was approved at the last, regular meeting of the Board.</p> <p>The difference in pay from the previous clerk's wage and what I am proposing for the new, Administrative Manager's position is approximately \$4,280. In checking with finance, it appears we would have these funds available this year yet due to some cost savings from other positions that were not filled throughout the year. We would then have to add this amount into the 2019 budget as well.</p> <p>.</p>

RECOMMENDATION:

Approve the requested position and allow for the immediate hiring of this position.

Village of Little Chute
REQUEST FOR VILLAGE BOARD CONSIDERATION

ITEM DESCRIPTION: 2018 Heesakker Park Deer Culling
PREPARED BY: Adam Breest, Parks, Recreation, & Forestry Director
REPORT DATE: September 14, 2018
ADMINISTRATOR'S REVIEW/COMMENTS: No additional comments to this report: _____ See additional comments attached: _____
<p>EXPLANATION: In 2017, the Village of Little Chute elected to participate in the deer culling at Heesakker Park. 2017 was a good year as we harvested 4 doe and 2 bucks and had 14 hunters. With the population of deer at Heesakker Park and the surrounding neighborhoods continuing to stay high I am proposing that we continue to operate the deer hunt in 2018.</p> <p>Dates: Monday, December 3, 2018 – Sunday, December 16, 2018 Locations: Heesakker and the eastern portion of Island Park</p> <p>Amount of Does or Bucks Harvested 2017 - 6 2016 - 8 2014 – 6 2013 – 5 2012 – 4 2011 – 8</p> <p>I believe that the Deer Culling has been beneficial in the past. I would recommend that we approve the Deer Culling for this December.</p> <p>ATTACHMENTS: 2018 Little Chute Policies and Regulations</p>
RECOMMENDATION: Approve the 2018 Deer Culling

POLICIES, RULES & REGULATIONS

Authorized Deer Culling – Village of Little Chute

Policies, rules & regulations are designed to ensure the safety of residents and others in areas being hunted and maximize the projected harvests. Failure to comply with any of these will result in the immediate revocation of hunting authorization and exclusion from future participation in this program.

- When hunting, each participant shall carry a Village of Little Chute Bow Hunting Authorization Letter, current Wisconsin Driver's License, and Hunting Tags.
- When hunting on the property, each vehicle shall display an authorization letter of the individuals participating.
- Parking shall be permitted only on village streets.
- Approved hunters will be authorized to cull either a buck or a doe depending upon the tags that the hunter possesses (may cull multiple deer). Hunters shall immediately report when they have culled any and all deer by calling the Little Chute Park & Rec Director at 423-3868.
- According to 2018 DNR regulations, there is a statewide antlerless hunt from Dec. 6 to Dec. 9. Hunters during this period are only allowed to cull does on those days.

Each Participant Shall:

- Abide by provisions outlined in the Hunting Authorization and hunt only the assigned site during the dates designated in their authorization letter.
- Follow all state statute and DNR regulations pertaining to bow hunting. Baiting will be allowed if the DNR permits it in this section.
- Be liable for your own acts and omissions.
- Act courteously and respectfully while on the property.
- If verbally assaulted, avoid engaging in an argument or becoming abusive. Under such circumstances, leave the area immediately and, if deemed appropriate, call the police. As soon as practicable, report the incident to the Park & Rec Director at 423-3868.
- When on the property, protect foliage, crops and plants from damage, alteration or destruction. You may NOT trim tree branches in order to install your hunting stand.
- Not remove or cut underbrush (i.e. shooting lanes, clearance, etc.).
- Not use an ATV or motorized vehicle on the property.
- When entering or exiting the woods, keep bow encased except when in your stand. Bow must be encased if engaged in tracking a wounded animal.
- When entering or exiting the woods in the dark, use a flashlight or other illuminating device.

- Hunt only from an elevated tree stand placed a minimum of 12 feet above the base of the tree in which the stand is placed. No ground hunting or shooting from the ground.
- Wear a safety harness at all times while hunting from a tree stand.
- Use only temporary, removable tree stands. Remove stand at the end of each day.
- Use a climbing stand of a type that will not damage the tree.
- Remove climbing aids such as stick ladders and tie-on tree steps from the tree after use when using portable "hang-on" tree stands.
- Maintain your equipment in top condition at all times. Be sure your equipment is tuned and set up properly.
- Hunt a minimum of 300 feet (100 yards) from roads and any private property.
- Not discharge or project an arrow at such an angle or distance as to land on public or private property not described in the permit.
- Not discharge or project an arrow or other object onto or over any hiking trail or bicycle trail within the designated hunting area.
- Track a wounded animal until found. If the animal moves off the assigned property, attempt to obtain permission to trespass for tracking purposes. If unable to obtain permission, notify the game warden immediately. As soon as practicable, report the incident to the Park & Rec Director at 423-3868.
- If unable to locate a wounded animal, notify the Park & Rec Director at 423-3868.
- If wounded animal moves to or dies in a conspicuous area, such as a field, trail, or roadway, remove the animal from the area and if a problem arises, contact the Park & Rec Director at 423-3868.
- Unless otherwise directed, field dress animals in the woods, at least 100 yards away from buildings, roads, or other places where non-hunters travel frequently, and 50 yards from wood chipped trails.
- Cover harvested animals with a tarp while dragging in the field out of respect for the non-hunting public and other park users.
- Follow all DNR requirements for registering deer.
- Account for all arrows used. Report the circumstances of missing or unrecovered arrows on the hunting log sheet.
- Keep an accurate, up-to-date log of times spent in the field to include: date, game harvested, time of harvest, and hunt location. At the end of your hunting period, promptly turn in the log to the Park & Rec Dept for compilation of statistics.
- Report to the Park & Rec Dept any violation of game laws or program policies, rules and regulations.



Urban Bow Hunt Boundaries

- No hunting:
within 300' setback from street centerline
- Hunting allowed



1 inch = 300 feet

0 100 200 300 400
Feet



Village of Little Chute

SEPTEMBER 2017

Disbursement List-September 19, 2018

Payroll & Payroll Liabilities - September 6, 2018	\$191,502.58
Prepaid Invoices - September 6, 2018	\$149.80
Prepaid Invoices - September 7, 2018	\$363,489.03
Prepaid Invoices - September 13, 2018	\$140.00
Prepaid Invoices - September 14, 2018	\$18,399.22

Utility Commission- September 18, 2018	\$170,530.83
--	---------------------

CURRENT ITEMS

Bills List - September 19, 2018	\$125,393.17
---------------------------------	---------------------

Total Payroll, Prepaid & Invoices	\$869,604.63
--	---------------------

The above payments are recommended for approval:

Rejected: _____

Approved September 19, 2018

Michael R Vanden Berg, Village President

Laurie Decker, Clerk

Report Criteria:
Invoice Detail.Voided = {=} FALSE

Invoice	Description	Total Cost	GL Account
AIRGAS USA LLC			
9955484048	CYLINDER RENTALS	51.74	101-53330-218
Total AIRGAS USA LLC:		51.74	
AL BEHLING ELECTRIC			
172	ELECTRICAL SERVICE @ VILLAGE HALL	141.18	101-51650-245
Total AL BEHLING ELECTRIC:		141.18	
AMG EMPLOYER SOLUTIONS			
371003	PRE-EMPLOYMENT PHYSICAL & DRUG SCREEN	262.00	207-52120-225
371589	EAP STANDARD SERVICE	85.51	101-51780-204
371589	EAP STANDARD SERVICE	105.63	101-53310-204
371589	EAP STANDARD SERVICE	135.81	207-52120-204
Total AMG EMPLOYER SOLUTIONS:		588.95	
AMPLITEL TECHNOLOGIES			
12704	COMBINED LOCKS INVESTIGATION ROOM SWITC	45.50	207-52120-302
12719	CISCO LICENSES FOR PHONES	499.17	207-52120-203
12723	DESTROY AND RECYCLE HARD DRIVES	60.00	404-57190-204
12748	MONTHLY DATTO BACK-UP SERVICE 09/18	325.00	404-57190-204
12749	DATTO BUSINESS BACKUP SERVICES 09/18	325.00	207-52120-204
12786	SURFACE PROS FOR DEPT HEADS	7,650.24	404-57190-221
Total AMPLITEL TECHNOLOGIES:		8,904.91	
APPLETON OIL CO INC			
AUGUST 2018	OFF ROAD DIESEL	19.83	630-53442-247
AUGUST 2018	OFF ROAD DIESEL	18.19	201-53620-247
AUGUST 2018	OFF ROAD DIESEL	967.12	101-55200-247
AUGUST 2018	OFF ROAD DIESEL	3.70	101-55440-247
AUGUST 2018	OFF ROAD DIESEL	5.11	610-53612-247
AUGUST 2018	OFF ROAD DIESEL	12.96	620-53644-247
AUGUST 2018	OFF ROAD DIESEL	83.04	101-53460-247
AUGUST 2018	OFF ROAD DIESEL	363.10	101-53330-217
Total APPLETON OIL CO INC:		1,473.05	
ASCENSION MEDICAL GROUP			
AUGUST YOGA 20	YOGA INSTRUCTOR 8/22	50.00	208-52900-218
Total ASCENSION MEDICAL GROUP:		50.00	
ASSOCIATED APPRAISAL CONSULT			
136111	PROFESSIONAL SERVICES-SEPTEMBER	1,258.33	101-51530-204
Total ASSOCIATED APPRAISAL CONSULT:		1,258.33	
AUSTIN, JESSICA			
CFEST 08/29/18	REFUND SHELTER DEPOSIT	50.00	101-34401

Invoice	Description	Total Cost	GL Account
Total AUSTIN, JESSICA:		50.00	
AUTOZONE			
1973106025	DIESEL EXHAUST FLUID	25.00	101-52200-215
1973113736	TEN HALOGEN BULBS	72.50	207-52120-248
Total AUTOZONE:		97.50	
AXON ENTERPRISE INC.			
SI-1550221	MAGNET MOUNT	89.95	207-52120-218
Total AXON ENTERPRISE INC.:		89.95	
BECK'S MEATS INC			
090418	RIBEYES	327.59	101-52200-219
Total BECK'S MEATS INC:		327.59	
BOUCHER, BRADY T			
08/18 REIMBURSE	HIGHWAY SAFETY CONFERENCE	35.00	207-52120-201
Total BOUCHER, BRADY T:		35.00	
BUILDING SERVICES GROUP INC			
40948	MONTHLY CLEANING-VILLAGE HALL	1,266.00	101-51650-204
40949	MONTHLY CLEANING-MUNICIPAL GARAGE	384.00	101-53310-204
Total BUILDING SERVICES GROUP INC:		1,650.00	
CELLCOM			
516106	FVMPD CELL - AUGUST	1,558.42	207-52120-203
Total CELLCOM:		1,558.42	
CITY OF APPLETON			
242937	SEPTEMBER WEIGHTS & MEASURES	483.00	101-52050-204
242983	SEPTEMBER 2018 TRANSIT	7,163.00	101-51780-233
Total CITY OF APPLETON:		7,646.00	
CONQUER MARTIAL ARTS			
CFEST 8/30/18	REFUND SHELTER DEPOSIT	50.00	101-34401
CFEST 8/30/18	REFUND BAND STAGE	20.00	101-34401
Total CONQUER MARTIAL ARTS:		70.00	
DEBOTH, TARA			
090618	REFUND PAINTING - FALL CLASS	25.00	208-34413
Total DEBOTH, TARA:		25.00	
ELRICK, JENNY			
090218	SECURITY DEPOSIT REFUND	100.00	208-34401
Total ELRICK, JENNY:		100.00	

Invoice	Description	Total Cost	GL Account
EMERGENCY SVCS MARKETING CORP			
090518	YEARLY SUBSCRIPTION	735.00	101-52200-208
Total EMERGENCY SVCS MARKETING CORP:		735.00	
FACTORY MOTOR PARTS CO			
18-1708858	BRAKE PADS & ROTORS TRUCK # 56	181.40	101-53330-225
18-1709258	CALIPER & HUB TRUCK #56	255.85	101-53330-225
Total FACTORY MOTOR PARTS CO:		437.25	
FARRELL EQUIPMENT & SUPPLY CO INC			
975370	SAFETY CONES	63.96	101-52350-218
Total FARRELL EQUIPMENT & SUPPLY CO INC:		63.96	
FIRELINE SPRINKLER CORP			
6007-18-3	QUARTERLY FIRE SPRINKLER INSPECTION	143.00	101-53310-204
Total FIRELINE SPRINKLER CORP:		143.00	
FOX VALLEY HUMANE ASSOCIATION			
4452	AUGUST HANDLE FEES	824.64	207-52120-204
Total FOX VALLEY HUMANE ASSOCIATION:		824.64	
GALLS LLC			
10579176	DUTY BELT	46.66	207-52120-212
10638022	Z-FOLDED COMBAT GAUZE	125.00	207-52120-212
10640946	HANDCUFF CASE	19.70	207-52120-212
Total GALLS LLC:		191.36	
GRAINGER			
9887187863	STROBE LIGHT TRUCK # 158	73.24	101-53330-225
Total GRAINGER:		73.24	
HAFNER, ANNE			
091518	REFUND HOME ALONE/SITTER COURSE	75.00	208-34413
Total HAFNER, ANNE:		75.00	
HARRISON PRINTING & PROMOTIONS			
22915	JETS COACHES CLOTHING	315.00	101-55460-225
Total HARRISON PRINTING & PROMOTIONS:		315.00	
HIETPAS, ERIN			
090618-1	REFUND PAINTING - FALL CLASS	25.00	208-34413
Total HIETPAS, ERIN:		25.00	
HIETPAS, PETE			
090418	AUGUST CLEANUP	30.00	101-52200-111

Invoice	Description	Total Cost	GL Account
Total HIETPAS, PETE:		30.00	
HOFFMAN PLASTERING			
091218	FINAL PAYMENT FOR PLASTERING JOB	3,100.00	206-55110-306
Total HOFFMAN PLASTERING:		3,100.00	
INTERSTATE BATTERY OF GREEN BAY			
90124898	BATTERIES FOR SHOP HOIST	189.90	101-53330-225
Total INTERSTATE BATTERY OF GREEN BAY:		189.90	
J.F. AHERN CO			
273944	FIRE EXTINGUISHER RECHARGE	46.00	207-52120-213
Total J.F. AHERN CO:		46.00	
JFTCO INC			
W64894	ENGINE & GENERATOR BATTERY	550.65	207-52120-302
Total JFTCO INC:		550.65	
JOE'S POWER CENTER			
29745	SPARK PLUG & AIR FILTER KIT	46.55	101-53300-221
Total JOE'S POWER CENTER:		46.55	
JX ENTERPRISES INC			
1451240P	SHAFT-AXLE #6	231.99	101-53330-225
1451590P	DOWEL FOR TRUCK #6	9.44	101-53330-225
Total JX ENTERPRISES INC:		241.43	
K.R. WEST COMPANY INC.			
373768	METRIC PIPE & SEAL #19	15.40	101-53330-225
Total K.R. WEST COMPANY INC.:		15.40	
KERRY'S VROOM SERVICE INC			
9029	OIL & FILTER CHANGE - UNIT#94	42.21	207-52120-247
9030	OIL & FILTER CHANGE -CHECKED ENGINE LIGHT	182.33	207-52120-247
Total KERRY'S VROOM SERVICE INC:		224.54	
KRAUTKRAMER, BRIDGET			
08/18 REIMBURSE	REIMBURSE FOR ITEMS FOR CHILDREN'S CONCE	34.70	101-55480-218
Total KRAUTKRAMER, BRIDGET:		34.70	
LINSMEYER, KERRIE			
090618-2	REFUND PAINTING - FALL CLASS	25.00	208-34413
Total LINSMEYER, KERRIE:		25.00	
MATTHEWS TIRE			
67258	4 NEW TIRES ON TRUCK #86	896.32	101-53330-225

Invoice	Description	Total Cost	GL Account
67258	4 NEW TIRES ON TRUCK #86	136.00	101-53330-204
Total MATTHEWS TIRE:		1,032.32	
MCC INC			
2732	STONE SCREENINGS	33.16	101-53310-242
Total MCC INC:		33.16	
MCCLONE			
256358	4TH QTR AUTO LIABILITY	26,999.00	101-51900-231
256358	4TH QTR WORKERS COMP	33,411.00	101-51900-230
Total MCCLONE:		60,410.00	
MCMAHON ASSOCIATES INC			
911209	NORTH SIDE STORM SEWER INTERCEPTOR	5,807.20	416-57600-261
Total MCMAHON ASSOCIATES INC:		5,807.20	
MILLIMAN			
0038LCH90/TSB/15	PREPARATION OF GASB 45 REPORT	2,500.00	101-51420-204
Total MILLIMAN:		2,500.00	
MONROE TRUCK EQUIPMENT INC			
794716	SURGE SUPPRESSOR	12.65	101-53330-218
Total MONROE TRUCK EQUIPMENT INC:		12.65	
MUNICIPAL CODE CORPORATION			
316445	ELECTRONIC UPDATE PAGES	268.95	101-51440-204
Total MUNICIPAL CODE CORPORATION:		268.95	
NECHODOM, TYLER			
09/18 REIMBURSE	WEDDING GIFT REIMBURSEMENT	90.00	101-52200-219
Total NECHODOM, TYLER:		90.00	
OUTAGAMIE COUNTY TREASURER			
4160	AUGUST SANITATION FEES	13,732.60	201-53620-204
AUGUST 2018	AUGUST COURT FINES	570.87	101-35101
Total OUTAGAMIE COUNTY TREASURER:		14,303.47	
PHOTO VANDERLOOP			
CFEST 09/09/18	REFUND SHELTER DEPOSIT	50.00	101-34401
Total PHOTO VANDERLOOP:		50.00	
REYNEBEAU UPHOLSTERY			
47863	FIX SEAM & BACKREST	150.00	101-53330-204
Total REYNEBEAU UPHOLSTERY:		150.00	

Invoice	Description	Total Cost	GL Account
ROGER BOWERS CONSTRUCTION			
957176	6 YDS. PULVERIZED TOP SOIL	60.00	101-55440-215
Total ROGER BOWERS CONSTRUCTION:		60.00	
SCHWAB, MELANI			
082518	SECURITY DEPOSIT REFUND	100.00	208-34401
Total SCHWAB, MELANI:		100.00	
SHERWIN INDUSTRIES INC			
SS076642	WAND ASSEMBLY FOR TRUCK #49	1,172.86	101-53330-225
Total SHERWIN INDUSTRIES INC:		1,172.86	
SLATER, PAULA			
09/18 REIMBURSE	REIMBURSE CSTARS TEAM MAKEUP	470.00	101-55300-218
Total SLATER, PAULA:		470.00	
SPIERINGS, SUE			
CFEST 8/18/18	REFUND SHELTER DEPOSIT	200.00	101-34401
Total SPIERINGS, SUE:		200.00	
STATE OF WI COURT FINES &			
AUGUST 2018	AUGUST COURT FINES	2,140.27	101-35101
Total STATE OF WI COURT FINES &:		2,140.27	
STONERIDGE LITTLE CHUTE LLC			
1095660856	PROPANE FOR FAMILY FUN FEST	18.89	101-55300-218
21056070815	BUNS FOR CARNIVAL	69.30	101-55300-218
22008001552	FUN WITH FOOD PROGRAMS	37.77	101-55300-218
22082761925	BAND WATER	5.98	101-55480-211
22092550720	LOCK-IN EVENT ITEMS	45.13	101-55300-218
24005471422	ITEMS FOR TOUCH A TRUCK EVENT	28.27	101-55300-218
25022951639	POOL CONCESSION PIZZAS	30.00	204-55420-211
26036251235	FOOD FOR ELECTION	49.33	101-51440-211
Total STONERIDGE LITTLE CHUTE LLC:		284.67	
TAPCO			
I612867	PREVENTATIVE MAINTENANCE ANNUAL FEE 201	900.00	101-53330-204
Total TAPCO:		900.00	
TOTAL TOOL SUPPLY INC			
6119578	TWO WIRE WHEELS	89.70	101-53330-221
TOTAL TOOL SUPPLY INC:		89.70	
UNEMPLOYMENT INSURANCE			
9150136	UNEMPLOYMENT-ROUTHIEAUX	34.00	101-51440-113
9150136	UNEMPLOYMENT - FORSYTH	18.40	101-52350-113
9150136	UNEMPLOYMENT - SWINGLE	370.00	207-52120-113

Invoice	Description	Total Cost	GL Account
Total UNEMPLOYMENT INSURANCE:		422.40	
UNIFIRST CORPORATION			
0970267750	SHIRTS/PANTS	9.90	101-53330-213
0970267750	LAUNDRY BAGS/WIPERS/DAMAGED PANTS	59.34	101-53330-218
Total UNIFIRST CORPORATION:		69.24	
US VENTURE			
L61027	SPECTRO V100 WATER AF FUEL	20.00	101-53330-217
Total US VENTURE:		20.00	
VAN SCHYNDEL, SCOTT			
08/18 REIMBURSE	REIMBURSEMENT-PD SUPPLIES-THUMBDRIVES	15.98	207-52120-218
Total VAN SCHYNDEL, SCOTT:		15.98	
VANDEN OEVER, BECKY			
CFEST 8/25/18	REFUND SHELTER DEPOSIT	50.00	101-34401
Total VANDEN OEVER, BECKY:		50.00	
VERHAGEN. KATHY			
09/07/18	SECURITY DEPOSIT REFUND	100.00	208-34401
Total VERHAGEN. KATHY:		100.00	
VERMEER WISCONSIN			
30063593	SCREWS FOR TRUCK #18	23.64	101-53330-225
30063594	RESHARPEN KNIVES	42.00	101-53330-204
Total VERMEER WISCONSIN:		65.64	
VILLAGE OF KIMBERLY			
090518	VOTING BY ABSENTEE BALLOT NOTICE	10.38	101-51440-227
Total VILLAGE OF KIMBERLY:		10.38	
VONBRIESEN & ROPER S.C.			
266627	LEGAL SERVICES	1,060.00	207-52120-262
Total VONBRIESEN & ROPER S.C.:		1,060.00	
WALESH, CODY			
09/18 REIMBURSE	REIMBURSEMENT OF WEDDING GIFT	90.00	101-52200-219
Total WALESH, CODY:		90.00	
WEGAND, TIM			
09/18 REIMBURSE	AWWA CONFERENCE 9/11/18 - 9/13/18	185.89	620-53924-201
091318	AWWA CONFERENCE 9/11/18 - 9/13/18	300.00	620-53924-112
Total WEGAND, TIM:		485.89	

Invoice	Description	Total Cost	GL Account
WELLS FARGO FINANCIAL LEASING			
5005182483	SEPTEMBER COPIER LEASE	450.00	101-53310-207
5005182483	SEPTEMBER COPIER LEASE	803.15	101-51650-207
Total WELLS FARGO FINANCIAL LEASING:		1,253.15	
WEYENBERG, RYAN			
083118	AUGUST CLEAN UP	30.00	101-52200-111
Total WEYENBERG, RYAN:		30.00	
WHALLEY, PAUL			
090818	SECURITY DEPOSIT REFUND	100.00	208-34401
VLIESHOUT 9/8/18	REFUND SHELTER DEPOSIT	20.00	101-34401
Total WHALLEY, PAUL:		120.00	
WILFER, ALLIE			
LEGION 9/8/18	REFUND SHELTER DEPOSIT	20.00	101-34401
Total WILFER, ALLIE:		20.00	
Grand Totals:		125,393.17	

Report GL Period Summary

Vendor number hash: 323976
Vendor number hash - split: 378167
Total number of invoices: 99
Total number of transactions: 115

Terms Description	Invoice Amount	Net Invoice Amount
Open Terms	125,393.17	125,393.17
Grand Totals:	125,393.17	125,393.17

Report Criteria:

Invoice Detail.Voided = {=} FALSE

Report Criteria:

Invoice Detail.Voided = {=} FALSE

Invoice	Type	Description	Total Cost	Terms	1099	PO Number	GL Account
5 ALARM FIRE & SAFETY EQUIPMENT (4319)							
178070-1	Invoi	CARBON MONOXIDE & CYANIDE MONITORS	425.87	Open	Non		101-52200-215
Total 5 ALARM FIRE & SAFETY EQUIPMENT (4319):			425.87				
AMPLITEL TECHNOLOGIES (4637)							
12282	Invoi	GO DADDY HOSTING	192.38	Open	Non		404-57190-208
12338	Invoi	SHELF & POWERSTRIP INSTALL	258.87	Open	Non		404-57190-302
Total AMPLITEL TECHNOLOGIES (4637):			451.25				
AT&T LONG DISTANCE (2751)							
08/18 845626857	Invoi	JULY/AUGUST CHARGES	6.14	Open	Non		101-51650-203
08/18 845626857	Invoi	JULY/AUGUST CHARGES	67.46	Open	Non		207-52120-203
08/18 845626857	Invoi	JULY/AUGUST CHARGES	25.00	Open	Non		620-53924-203
Total AT&T LONG DISTANCE (2751):			98.60				
BOWERS, ROGER (4960)							
092218	Invoi	JETS REF MAKEUP GAME 9/22/18	135.00	Open	Non		101-55460-111
Total BOWERS, ROGER (4960):			135.00				
COMPASS MINERALS AMERICA (4500)							
293907	Invoi	BULK COARSE UNTREATED ROCK	2,483.51	Open	Non		620-53634-224
295013	Invoi	BULK COARSE UNTREATED ROCK	2,409.27	Open	Non		620-53634-224
299005	Invoi	BULK COARSE UNTREATED ROCK	2,409.27	Open	Non		620-53634-224
Total COMPASS MINERALS AMERICA (4500):			7,302.05				
DORNER COMPANY (4840)							
144185	Invoi	BUTTERFLY VALVE	576.37	Open	Non		620-53634-255
Total DORNER COMPANY (4840):			576.37				
ESRI WISC USER GROUP (2676)							
132406	Invoi	2018 EWUG CONFERENCE CASTONIA	200.00	Open	Non		101-51410-201
Total ESRI WISC USER GROUP (2676):			200.00				
FERGUSON WATERWORKS #1476 (221)							
255844	Invoi	HYMAX COUPLING/CLAMPS/BALL VALVES	1,246.52	Open	Non		620-53644-251
Total FERGUSON WATERWORKS #1476 (221):			1,246.52				
HAWKINS INC (1918)							
4352566	Invoi	AZONE	518.78	Open	Non		620-53634-214
4352566	Invoi	SODIUM SILICATE	2,623.17	Open	Non		620-53634-220
Total HAWKINS INC (1918):			3,141.95				
J.F. AHERN CO (2011)							
275220	Invoi	SEP ANNUAL INSPECTION/LIBRARY	429.99	Open	Non		206-55110-243

Invoice	Type	Description	Total Cost	Terms	1099	PO Number	GL Account
Total J.F. AHERN CO (2011):			429.99				
JX ENTERPRISES INC (3079)							
2410644S	Invoi	DIAGNOSTIC CHECK ON TRUCK #6	194.06	Open	Non		101-53330-225
2411043S	Invoi	REPLACED ABS HARNESS & SENSORS #32	1,095.54	Open	Non		101-53330-204
2414918P	Invoi	COOLANT FOR TRUCK #32	8.99	Open	Non		101-53330-225
2419786P	Invoi	TOOL INSTALLER #32	37.99	Open	Non		101-53330-225
2419840P	Invoi	HYDRAULIC ADAPTER #32	4.11	Open	Non		101-53330-225
Total JX ENTERPRISES INC (3079):			1,340.69				
LEE'S CONTRACTING/FABRICATING (271)							
21314	Invoi	CUT IN 6" VALVE @ WELL #4	1,227.25	Open	Non		620-53634-255
Total LEE'S CONTRACTING/FABRICATING (271):			1,227.25				
LEXISNEXIS RISK DATA MANAGEMENT INC (4926)							
1686177-20180731	Invoi	JULY 2018 MINIMUM COMMITMENT	50.00	Open	Non		101-51680-204
1686177-20180831	Invoi	AUGUST 2018 MINIMUM COMMITMENT	50.00	Open	Non		101-51680-204
Total LEXISNEXIS RISK DATA MANAGEMENT INC (4926):			100.00				
NEWS PUBLISHING CO INC (857)							
409692	Invoi	VILLAGE MARKET	33.00	Open	Non		101-55300-232
409727	Invoi	ZONING CHANGE	52.17	Open	Non		101-51650-207
409729	Invoi	NOTICE POLLING PLACE	26.09	Open	Non		101-51440-227
409729-1	Invoi	NOTICE POLLING PLACE	20.61	Open	Non		101-51440-227
409730	Invoi	LEGION GRADING	18.06	Open	Non		420-57620-273
410582	Invoi	VILLAGE MARKET	33.00	Open	Non		101-55300-232
410619	Invoi	NOTICE POLLING PLACE	21.61	Open	Non		101-51440-227
410620	Invoi	ZONING CHANGE	42.22	Open	Non		101-51650-207
410624	Invoi	NOTICE TO BIDDERS	172.77	Open	Non		101-51650-207
411370	Invoi	VILLAGE MARKET	33.00	Open	Non		101-55300-232
412140	Invoi	VILLAGE MARKET	33.00	Open	Non		101-55300-232
412166	Invoi	ZONING CHANGE	52.17	Open	Non		101-51650-207
412665	Invoi	CROSSWALKS	18.06	Open	Non		101-51440-227
413300	Invoi	ZONING CHANGE	42.22	Open	Non		101-51650-207
Total NEWS PUBLISHING CO INC (857):			597.98				
PACE ANALYTICAL SERVICES INC (4619)							
1840054915	Invoi	WATER ANALYSIS	48.00	Open	Non		620-53644-204
Total PACE ANALYTICAL SERVICES INC (4619):			48.00				
PLESHEK OUTDOOR POWER (727)							
71560	Invoi	CHAINS SHARPENED	67.80	Open	Non		101-55440-205
Total PLESHEK OUTDOOR POWER (727):			67.80				
SIGNCOUNTRY (3870)							
9782	Invoi	INSTALL GRAPHICS ON HOOD OF SQUAD	265.00	Open	Non		207-52120-247
Total SIGNCOUNTRY (3870):			265.00				

Invoice	Type	Description	Total Cost	Terms	1099	PO Number	GL Account
TIME WARNER CABLE (89)							
09/18 60505470190	Invoi	SEPTEMBER/OCTOBER SERVICE	125.26	Open	Non		101-51650-203
09/18 70953560100	Invoi	SEPTEMBER/OCTOBER SERVICE	449.79	Open	Non		101-51650-203
Total TIME WARNER CABLE (89):			575.05				
VERIZON WIRELESS (3606)							
9812781142	Invoi	JULY/AUGUST SERVICE	49.85	Open	Non		620-53924-203
Total VERIZON WIRELESS (3606):			49.85				
WLIA (1991)							
091118	Invoi	REGISTRATION FEES-CASTONIA	120.00	Open	Non		101-51410-201
Total WLIA (1991):			120.00				
Grand Totals:			18,399.22				

Report GL Period Summary

Vendor number hash: 98977
 Vendor number hash - split: 106397
 Total number of invoices: 42
 Total number of transactions: 45

Terms Description	Invoice Amount	Net Invoice Amount
Open Terms	18,399.22	18,399.22
Grand Totals:	18,399.22	18,399.22

Report Criteria:

Invoice Detail.Voided = {=} FALSE

Report Criteria:

Invoice Detail.Voided = {=} FALSE

Invoice	Type	Description	Total Cost	Terms	1099	PO Number	GL Account
LAMBERT, JOHN (4939)							
091318	Invoi	FARMER'S MARKET ENTERTAINMENT	100.00	Open	Non		101-55300-232
Total LAMBERT, JOHN (4939):			100.00				
WISCONSIN SUPREME COURT (2850)							
09/27 - 09/28	Invoi	MUNICIPAL COURT CLERK SEMINAR	40.00	Open	Non		101-51680-201
Total WISCONSIN SUPREME COURT (2850):			40.00				
Grand Totals:			140.00				

Report GL Period Summary

Vendor number hash: 7789
Vendor number hash - split: 7789
Total number of invoices: 2
Total number of transactions: 2

Terms Description	Invoice Amount	Net Invoice Amount
Open Terms	140.00	140.00
Grand Totals:	140.00	140.00

Report Criteria:

Invoice Detail.Voided = {=} FALSE

Invoice	Type	Description	Total Cost	Terms	1099	PO Number	GL Account
2018 UTILITY REFUNDS (4900)							
116095013	Invoi	OVERPAYMENT ON ACCT# 1-160950-13	56.96	Open	Non		001-15000
170282001	Invoi	OVERPAYMENT ON ACCT# 1-702820-01	40.00	Open	Non		001-15000
Total 2018 UTILITY REFUNDS (4900):			96.96				
CAREW CONCRETE & SUPPLY CO. (149)							
1107294	Invoi	CONCRETE FOR SIDEWALK TO JETS STORAGE	400.00	Open	Non		101-55460-204
Total CAREW CONCRETE & SUPPLY CO. (149):			400.00				
HAMMEN, MICHAEL (2704)							
091118	Invoi	JETS REF 09/11	135.00	Open	Non		101-55460-111
Total HAMMEN, MICHAEL (2704):			135.00				
JOOSTEN, BRIAN (2269)							
091118	Invoi	JETS REF 09/11	135.00	Open	Non		101-55460-111
Total JOOSTEN, BRIAN (2269):			135.00				
MANSER, NOAH (4860)							
091118	Invoi	JETS REF 09/11/18	135.00	Open	Non		101-55460-111
Total MANSER, NOAH (4860):			135.00				
MCC INC (480)							
147718	Invoi	STONE SCREENINGS FOR JETS STORAGE	33.16	Open	Non		101-55460-204
Total MCC INC (480):			33.16				
SCHAEFER, BRUCE (4163)							
091118	Invoi	JETS REF 09/11	135.00	Open	Non		101-55460-111
Total SCHAEFER, BRUCE (4163):			135.00				
TIME WARNER CABLE (89)							
08/18 70590040100	Invoi	AUGUST/SEPTEMBER SERVICE	87.82	Open	Non		101-52200-203
08/18 71391120150	Invoi	AUGUST/SEPTEMBER SERVICE	230.99	Open	Non		207-52120-203
Total TIME WARNER CABLE (89):			318.81				
VERIZON WIRELESS (3606)							
9812268980	Invoi	JULY/AUGUST SERVICE	130.86	Open	Non		101-52200-203
Total VERIZON WIRELESS (3606):			130.86				
VINTON CONSTRUCTION CO (29)							
2018002	Invoi	PROGRESS PYMT #1-2018 WILSON/HAYES PROJE	92,347.03	Open	Non		452-51017-263
2018002	Invoi	PROGRESS PYMT #1-2018 WILSON/HAYES PROJE	207,906.72	Open	Non		452-51018-263
2018003	Invoi	PROGRESS PYMT #1-2018 DAYTONA LN RECONS	61,415.49	Open	Non		452-51020-263
Total VINTON CONSTRUCTION CO (29):			361,669.24				

Invoice	Type	Description	Total Cost	Terms	1099	PO Number	GL Account
WHBY-AM (4959)							
11808170909	Invoi	LIVE READ/FARMER'S MARKET	300.00	Open	Non		101-55300-232
Total WHBY-AM (4959):			300.00				
Grand Totals:			363,489.03				

Report GL Period Summary

Vendor number hash: 33226
Vendor number hash - split: 33255
Total number of invoices: 14
Total number of transactions: 15

Terms Description	Invoice Amount	Net Invoice Amount
Open Terms	363,489.03	363,489.03
Grand Totals:	363,489.03	363,489.03

Report Criteria:

Invoice Detail.Voided = {=} FALSE

Report Criteria:

Invoice Detail.Voided = {=} FALSE

Invoice	Type	Description	Total Cost	Terms	1099	PO Number	GL Account
AMERICAN FIDELITY ASSURANCE (4885)							
B794723-1	Invoi	ACCIDENT COVERAGE-STAHMANN	49.80	Open	Non		101-21367
Total AMERICAN FIDELITY ASSURANCE (4885):			49.80				
SALERNO, ANTONIO (4941)							
090618	Invoi	VILLAGE MARKET ENTERTAINMENT	100.00	Open	Non		101-55300-232
Total SALERNO, ANTONIO (4941):			100.00				
Grand Totals:			149.80				

Report GL Period Summary

Vendor number hash: 9826
Vendor number hash - split: 9826
Total number of invoices: 2
Total number of transactions: 2

Terms Description	Invoice Amount	Net Invoice Amount
Open Terms	149.80	149.80
Grand Totals:	149.80	149.80