



AGENDA

VILLAGE OF LITTLE CHUTE UTILITY COMMISSION MEETING

PLACE: Little Chute Village Hall, Board Room

DATE: Tuesday, August 20, 2024

TIME: 5:00 p.m.

Join Zoom Meeting:

<https://us06web.zoom.us/j/85421552374>

Meeting ID: 854 2155 2374

Dial by your location: +1 312 626 6799 US (Chicago)

- A. Call to Order
 - B. Roll Call
 - C. Public Appearance for Items Not on the Agenda
-

1. Approval of Minutes of July 16, 2024
2. Discussion/Action – Nestle Meter Update
3. Discussion – Stormwater Update
4. Discussion/Recommendation—Water Truck Replacement
5. Discussion – Landfill Update
6. Progress Reports
 - a. MCO Operations Update
 - b. Director of Public Works
 - c. Finance Director
7. Approval of Vouchers
8. Unfinished Business
9. Items for Future Agenda
10. Adjournment

Requests from persons with disabilities who need assistance to participate in this meeting should be made with as much advance notice as possible to the Clerk's Office at 108 West Main Street, (920) 423-3852

Prepared: August 15, 2024

MINUTES OF THE UTILITY COMMISSION MEETING OF JULY 16, 2024

Call to Order

The Utility Commission meeting was called to order at 5:00 PM by Kevin Coffey, Chair

Roll Call

PRESENT: Kevin Coffey, Chair
Tom Buchholz
Mike Vanden Berg
Ken Verstegen
Jessica Schultz

ALSO PRESENT: Kent Taylor, Lisa Remiker-Dewall, Beau Bernhoft, Jerry Verstegen with MCO

Public Appearance for Items Not on the Agenda

None

Approval of Minutes from the Utility Commission Meeting of June 18, 2024

Moved by K. Verstegen, seconded by T. Buccholz to Approve Minutes from the Utility Commission of June 18, 2024.

All Ayes – Motion Carried

Discussion – Nestle Meter Update

Director Remiker-DeWall provided a report with data on Nestle Meter usage.

Discussion/Action – Nestle Meter Placement

Director Taylor provided an update along with the letter that was sent from the Commission, signed by Chair Coffey. A meeting was held with Nestle and the Village Staff on July 12. Plant Manager Marcus Brenneman went over 2023 Evaporation Estimates. After discussing staff agreed to meet and come up with a percentage to bill in interim while continuing to work with Nestle on the matter.

Progress Reports

Approval of Vouchers

Moved by T. Buchholz, seconded by J. Schultz, to Approve and Authorize payment of Vouchers and draw from the respective funds.

All Ayes – Motion Carried

Unfinished Business

Items for Future Agendas

Nestle Rate Discussion

Adjournment

Moved by K. Coffey seconded by Buccholz to Adjourn Utility Commission Meeting at 5:40 p.m.

VILLAGE OF LITTLE CHUTE

By: _____

Kevin Coffey, Chair

Attest: _____
Laurie Decker, Village Clerk



Item For Consideration

For Commission Review On: August 20, 2024
Agenda Item Topic: Nestle Sewer Meter

Prepared On: August 9, 2024
Prepared By: Finance & DPW

Report: On August 2, the Village received the July meter report from Nestle (inception to date reads attached) with the following verbiage, "Attached is the meter report July YTD. No issues noted this month."

Historically, at the June 20, 2023, meeting, action taken by the Commission stated Nestle was to be invoiced at 68.7% of water consumption until reliable meter history could be accumulated for one year (minutes attached).

Each month since this action, the Utilities Commission is provided with updated meter reports in comparison to water usage. A meeting was held with Nestle and the Village Staff on July 12, 2024. Subsequently, Plant Manager Marcus Brenneman attended the July Utilities Commission meeting to present the 2023 Evaporation Estimates and other relevant data. After Utilities Commission discussion, staff was directed to meet and present back to the Utilities Commission a percentage to bill Nestle in the interim while Nestle installs a dedicated manhole to facilitate observation, accurate measurement, and sampling of wastes in a nonconvergent exclusive flow according to industry standards for meter placement.

Staff Proposal

Nestle is to be billed at 59% for sewer volume with a start date effective for the next invoice) meter read from July 3 to August 5). In anticipation of proposed Sewer Ordinance changes as a part of the current ongoing rate study, the Village will reimburse Nestle for the invoiced cost of the meter purchased (in 2022) if Nestle constructs the specified control manhole to facilitate observation, accurate measurement, and sampling of wastes in a nonconvergent exclusive flow according to industry standards for meter placement by December 31, 2024. The monthly billing will revert 68.67% in January 2025 if the manhole has not been installed and functioning to the Village's satisfaction. The reimbursement for the meter will take place after the Utilities Commission approves a minimum of six months data monitoring for the new meter placement.



Item For Consideration

50.00%	Nestle Proposal	
68.67%	Current Billing %	
118.67%		
59.34%	Average	
59.00%	Rounded for ease	

Fiscal Impact: Sewer Utility industrial revenues and equity considerations to ratepayers.

Recommendation/Commission Action: Staff requests approval of the proposal presented.

Respectfully Submitted,

Lisa Remiker-DeWall, Finance Director
Kent Taylor, Department of Public Works Director

<u>Meter Read Dates</u>	<u>Village Invoice Based on Water Volume</u>	<u>Nestle Sewer Meter</u>		<u>Days</u>	<u>Adjusted Metered Sewer</u>	
12/09/22 to 01/06/23	3,465,852	2,467,630	71.20%	Missing 12/18,12/19, and 12/31; 88,129 was average*	2,732,017	78.83%
01/07/23 to 02/08/23	3,920,323	2,637,122	67.27%	82,410 average	2,637,122	67.27%
02/09/23 to 03/08/23	3,196,009	1,507,659	47.17%	55,839 average	1,507,659	47.17%
03/09/23 to 04/07/23	3,413,947	2,552,022	74.75%	Missing 3/21 & 3/22, 91,143 was average*	2,734,308	80.09%
	13,996,131	9,164,433	65.48%		9,611,106	68.67%
04/08/23 to 05/09/23	4,544,815		0.00%	Meter malfunctioning so data not available		
05/10/23 to 06/09/23	4,134,641		0.00%	Meter malfunctioning so data not available		
06/10/23 to 07/06/23	3,973,184		0.00%	Meter malfunctioning so data not available		
07/07/23 to 08/08/23	5,202,565		0.00%	Inaccurate data for part of the period		
08/09/23 to 09/07/23	4,662,383	1,786,034	38.31%	59,534 average	30	
09/08/23 to 10/06/23	4,416,942	1,376,796	31.17%	47,476 average	29	
10/07/23 to 11/07/23	4,364,126	1,576,548	36.13%	49,267 average	32	
11/08/23 to 12/07/23	3,386,644	1,037,675	30.64%	34,589 average	30	
12/08/23 to 01/05/24	2,568,454	994,282	38.71%	34,286 average	29	
01/06/24 to 02/06/24	2,978,732	1,026,058	34.45%	31,093 average	33	
02/07/24 to 03/07/24	3,088,293	857,655	27.77%	29,574 average	29	
03/08/24 to 04/04/24	2,743,785	864,605	31.51%	32,022 average	27	
04/05/24 to 05/06/24	3,260,556	1,195,632	36.67%	38,569 average	31	
05/07/24 to 06/05/24	2,978,113	1,426,683	47.91%	49,196 average	29	4/25-6/7 low chamber malfunction resulted in estimate
06/06/24 to 07/01/24	2,459,017	1,473,397	59.92%	58,936 average	25	
07/02/24 to 08/05/24						

Monthly Production December 2022

Monthly Statistics	
Total	1,182,320
Days Pumped	16
Average	73,895
Maximum Total	130,532
on Day	17
Minimum Total	28,101
on Day	9

Daily Statistics	
Maximum	130,532
Minimum	28,101

Location Statistics	
Maximum	1,182,320
at Location	Effluent Flow Meter
Minimum	0
at Location	Future

Date	Effluent Flow Meter	Future	Future	Total
1				
2				
3	43,771			43,771
4	65,027			65,027
5	76,295			76,295
6	68,094			68,094
7	62,450			62,450
8	88,028			88,028
9	28,101			28,101
10	118,574			118,574
11	76,748			76,748
12	79,349			79,349
13	60,989			60,989
14	62,090			62,090
15	66,972			66,972
16	67,603			67,603
17	130,532			130,532
18	87,697			87,697
19				
20				
21				
22				
23				
24				
25				
26				
27				
28				
29				
30				
31				
Totals	1,182,320	0	0	1,182,320
Total Cost	\$4,185.06	\$0.00	\$0.00	\$4,185.06

Day lag in December data

12/9-12/17

866,683

Per Nestle, communication issue with meter and when it re-connected it started the report over instead of adding days thus two reports for December :

Monthly Production

December

2022

Monthly Statistics	
Total	1,051,285
Days Pumped	11
Average	95,571
Maximum Total	228,502
on Day	24
Minimum Total	49,858
on Day	26

Daily Statistics	
Maximum	228,502
Minimum	49,858

Location Statistics	
Maximum	1,051,285
at Location	Effluent Flow Meter
Minimum	0
at Location	Future

Date	Effluent Flow Meter				Total
1					
2					
3					
4					
5					
6					
7					
8					
9					
10					
11					
12					
13					
14					
15					
16					
17					
18					
19					
20					
21	71,802				71,802
22	57,716				57,716
23	112,093				112,093
24	228,502				228,502
25	51,354				51,354
26	49,858				49,858
27	84,520				84,520
28	59,806				59,806
29	74,032				74,032
30	74,604				74,604
31	186,998				186,998
Totals	1,051,285				1,051,285
Total Cost	\$0.00				\$0.00

Day lag in December Data

12/20-12/30

1,051,285

Per Nestle, communication issue with meter and when it re-connected it started the report over instead of adding days thus two reports for December 2022

Monthly Production

January 2023

Monthly Statistics	
Total	2,821,042
Days Pumped	31
Average	91,001
Maximum Total	169,819
on Day	20
Minimum Total	49,720
on Day	#N/A

Daily Statistics	
Maximum	169,819
Minimum	49,720

Location Statistics	
Maximum	2,821,042
at Location	Effluent Flow Meter
Minimum	0
at Location	Future

Date	Effluent Flow Meter				Total
1	55,096				55,096
2	79,627				79,627
3	71,780				71,780
4	74,362				74,362
5	127,906				127,906
6	140,891				140,891
7	60,021				60,021
8	76,495				76,495
9	91,942				91,942
10	96,018				96,018
11	82,938				82,938
12	97,464				97,464
13	137,320				137,320
14	90,404				90,404
15	87,419				87,419
16	69,987				69,987
17	124,070				124,070
18	72,637				72,637
19	67,536				67,536
20	169,819				169,819
21	61,689				61,689
22	56,234				56,234
23	63,174				63,174
24	143,078				143,078
25	120,575				120,575
26	99,809				99,809
27	156,952				156,952
28	75,755				75,755
29	56,671				56,671
30	49,720				49,720
31	63,653				63,653
Totals	2,821,042				2,821,042
Total Cost	\$0.00				\$0.00

1/1 to 1/6 549,662
1/7-131 2,271,380

Monthly Production

February 2023

Monthly Statistics	
Total	1,370,007
Days Pumped	28
Average	48,929
Maximum Total	98,904
on Day	24
Minimum Total	29,492
on Day	25

Daily Statistics	
Maximum	98,904
Minimum	29,492

Location Statistics	
Maximum	1,370,007
at Location	Effluent Flow Meter
Minimum	0
at Location	Future

Date	Effluent Flow Meter				Total
1	37,435				37,435
2	34,641				34,641
3	92,599				92,599
4	32,644				32,644
5	32,275				32,275
6	49,242				49,242
7	46,808				46,808
8	40,098				40,098
9	40,539				40,539
10	68,996				68,996
11	39,086				39,086
12	50,487				50,487
13	37,265				37,265
14	43,342				43,342
15	43,247				43,247
16	37,189				37,189
17	73,279				73,279
18	45,067				45,067
19	46,605				46,605
20	59,001				59,001
21	39,897				39,897
22	55,253				55,253
23	45,839				45,839
24	98,904				98,904
25	29,492				29,492
26	36,244				36,244
27	60,364				60,364
28	54,169				54,169
29					
30					
31					
Totals	1,370,007				1,370,007
Total Cost	\$0.00				\$0.00

2/1/23-2/8/23 365,742
 2/9/23-2/28/23 1,004,265

Monthly Production

March 2023

Monthly Statistics	
Total	2,312,585
Days Pumped	29
Average	79,744
Maximum Total	137,024
on Day	24
Minimum Total	35,349
on Day	12

Daily Statistics	
Maximum	137,024
Minimum	35,349

Location Statistics	
Maximum	2,312,585
at Location	Effluent Flow Meter
Minimum	0
at Location	Future

Date	Effluent Flow Meter				Total
1	56,928				56,928
2	94,517				94,517
3	97,536				97,536
4	38,933				38,933
5	53,126				53,126
6	54,581				54,581
7	56,299				56,299
8	51,474				51,474
9	52,174				52,174
10	89,127				89,127
11	57,607				57,607
12	35,349				35,349
13	43,359				43,359
14	47,066				47,066
15	40,487				40,487
16	46,950				46,950
17	108,445				108,445
18	121,585				121,585
19	85,490				85,490
20	94,283				94,283
21					
22					
23	112,840				112,840
24	137,024				137,024
25	114,497				114,497
26	91,880				91,880
27	94,412				94,412
28	116,498				116,498
29	104,071				104,071
30	104,934				104,934
31	111,113				111,113
Totals	2,312,585				2,312,585
Total Cost	\$0.00				\$0.00

3/1/23-3/8/23 503,394
 3/9/23-3/31/23 1,809,191

Monthly Production

April 2023

Monthly Statistics	
Total	896,364
Days Pumped	30
Average	29,879
Maximum Total on Day	128,046
Minimum Total on Day	118

Daily Statistics	
Maximum	128,046
Minimum	118

Location Statistics	
Maximum at Location	896,364
Minimum at Location	0
	Effluent Flow Meter
	Future

Date	Effluent Flow Meter				Total
1	101,181				101,181
2	98,423				98,423
3	112,141				112,141
4	108,780				108,780
5	99,425				99,425
6	94,835				94,835
7	128,046				128,046
8	118,656				118,656
9	31,671				31,671
10	172				172
11	181				181
12	187				187
13	186				186
14	186				186
15	196				196
16	157				157
17	118				118
18	134				134
19	124				124
20	156				156
21	148				148
22	134				134
23	128				128
24	131				131
25	135				135
26	143				143
27	158				158
28	162				162
29	141				141
30	129				129
31					
Totals	896,364				896,364
Total Cost	\$0.00				\$0.00

4/1/233-4/7/23

742,831

May 2023

Location Statistics	
Maximum at Location	11,304 Effluent Flow Meter
Minimum at Location	0 Future

Date	Effluent Flow Meter				Total
1	125				125
2	139				139
3	146				146
4	166				166
5	164				164
6	168				168
7	173				173
8	158				158
9	174				174
10	189				189
11	6,110				6,110
12	183				183
13	180				180
14	161				161
15	170				170
16	178				178
17	152				152
18	169				169
19	173				173
20	175				175
21	187				187
22	190				190
23	195				195
24	168				168
25	167				167
26	173				173
27	179				179
28	187				187
29	195				195
30	204				204
31	206				206
Totals	11,304				11,304
Total Cost	\$0.00				\$0.00

Monthly Production

June 2023

Monthly Statistics	
Total	917,262
Days Pumped	30
Average	30,575
Maximum Total	114,514
on Day	9
Minimum Total	186
on Day	6

Daily Statistics	
Maximum	114,514
Minimum	186

Location Statistics	
Maximum	917,262
at Location	Effluent Flow Meter
Minimum	0
at Location	Future

Date	Effluent Flow Meter				Total	Total Cost
1	207				207	\$0.00
2	889				889	\$0.00
3	45,904				45,904	\$0.00
4	195				195	\$0.00
5	198				198	\$0.00
6	186				186	\$0.00
7	29,795				29,795	\$0.00
8	56,576				56,576	\$0.00
9	114,514				114,514	\$0.00
10	84,956				84,956	\$0.00
11	40,159				40,159	\$0.00
12	55,505				55,505	\$0.00
13	51,825				51,825	\$0.00
14	40,632				40,632	\$0.00
15	37,314				37,314	\$0.00
16	25,680				25,680	\$0.00
17	14,526				14,526	\$0.00
18	16,870				16,870	\$0.00
19	15,942				15,942	\$0.00
20	26,446				26,446	\$0.00
21	20,807				20,807	\$0.00
22	22,826				22,826	\$0.00
23	28,301				28,301	\$0.00
24	24,682				24,682	\$0.00
25	17,522				17,522	\$0.00
26	26,120				26,120	\$0.00
27	21,929				21,929	\$0.00
28	24,848				24,848	\$0.00
29	43,478				43,478	\$0.00
30	28,430				28,430	\$0.00
31						#VALUE!
Totals	917,262				917,262	
Total Cost	\$0.00				\$0.00	

Monthly Production

July 2023

Monthly Statistics	
Total	1,647,985
Days Pumped	31
Average	53,161
Maximum Total	182,903
on Day	28
Minimum Total	155
on Day	11

Daily Statistics	
Maximum	182,903
Minimum	155

Location Statistics	
Maximum	1,647,985
at Location	Effluent Flow Meter
Minimum	0
at Location	Future

Date	Effluent Flow Meter				Total	Total Cost
1	19,755				19,755	\$0.00
2	17,354				17,354	\$0.00
3	17,989				17,989	\$0.00
4	3,072				3,072	\$0.00
5	187				187	\$0.00
6	175				175	\$0.00
7	159				159	\$0.00
8	166				166	\$0.00
9	172				172	\$0.00
10	190				190	\$0.00
11	155				155	\$0.00
12	35,197				35,197	\$0.00
13	65,783				65,783	\$0.00
14	118,417				118,417	\$0.00
15	107,312				107,312	\$0.00
16	48,048				48,048	\$0.00
17	57,980				57,980	\$0.00
18	62,428				62,428	\$0.00
19	61,383				61,383	\$0.00
20	60,827				60,827	\$0.00
21	125,215				125,215	\$0.00
22	74,732				74,732	\$0.00
23	44,953				44,953	\$0.00
24	58,257				58,257	\$0.00
25	67,837				67,837	\$0.00
26	68,262				68,262	\$0.00
27	90,647				90,647	\$0.00
28	182,903				182,903	\$0.00
29	115,843				115,843	\$0.00
30	72,823				72,823	\$0.00
31	69,764				69,764	\$0.00
Totals		1,647,985			1,647,985	
Total Cost	\$0.00				\$0.00	

Monthly Production

August 2023

Monthly Statistics	
Total	2,191,189
Days Pumped	31
Average	70,684
Maximum Total	153,356
on Day	4
Minimum Total	40,251
on Day	24

Daily Statistics	
Maximum	153,356
Minimum	40,251

Location Statistics	
Maximum	2,191,189
at Location	Effluent Flow Meter
Minimum	0
at Location	Future

Date	Effluent Flow Meter				Total	Total Cost
1	66,487				66,487	\$0.00
2	68,519				68,519	\$0.00
3	100,539				100,539	\$0.00
4	153,356				153,356	\$0.00
5	91,031				91,031	\$0.00
6	62,558				62,558	\$0.00
7	66,308				66,308	\$0.00
8	58,498				58,498	\$0.00
9	59,875				59,875	\$0.00
10	87,685				87,685	\$0.00
11	79,814				79,814	\$0.00
12	53,545				53,545	\$0.00
13	60,451				60,451	\$0.00
14	87,130				87,130	\$0.00
15	87,024				87,024	\$0.00
16	71,620				71,620	\$0.00
17	77,609				77,609	\$0.00
18	96,598				96,598	\$0.00
19	48,875				48,875	\$0.00
20	47,195				47,195	\$0.00
21	48,566				48,566	\$0.00
22	48,550				48,550	\$0.00
23	43,691				43,691	\$0.00
24	40,251				40,251	\$0.00
25	71,939				71,939	\$0.00
26	54,824				54,824	\$0.00
27	41,602				41,602	\$0.00
28	53,776				53,776	\$0.00
29	55,268				55,268	\$0.00
30	94,600				94,600	\$0.00
31	113,405				113,405	\$0.00
Totals	2,191,189				2,191,189	
Total Cost	\$0.00				\$0.00	

8/1/23-8/8/23 667,296
8/9/23 - 8/31/23 1,523,893

Monthly Production

September 2023

Monthly Statistics	
Total	1,350,656
Days Pumped	30
Average	45,022
Maximum Total	75,938
on Day	#N/A
Minimum Total	16,493
on Day	4

Daily Statistics	
Maximum	75,938
Minimum	16,493

Location Statistics	
Maximum	1,350,656
at Location	Effluent Flow Meter
Minimum	0
at Location	Future

Date	Effluent Flow Meter					Total	Total Cost
1	51,497					51,497	\$0.00
2	40,263					40,263	\$0.00
3	17,658					17,658	\$0.00
4	16,493					16,493	\$0.00
5	45,521					45,521	\$0.00
6	42,919					42,919	\$0.00
7	47,790					47,790	\$0.00
8	70,762					70,762	\$0.00
9	44,884					44,884	\$0.00
10	37,317					37,317	\$0.00
11	39,667					39,667	\$0.00
12	51,631					51,631	\$0.00
13	37,486					37,486	\$0.00
14	38,015					38,015	\$0.00
15	65,703					65,703	\$0.00
16	47,366					47,366	\$0.00
17	25,859					25,859	\$0.00
18	31,943					31,943	\$0.00
19	41,620					41,620	\$0.00
20	46,305					46,305	\$0.00
21	51,306					51,306	\$0.00
22	69,770					69,770	\$0.00
23	44,798					44,798	\$0.00
24	26,435					26,435	\$0.00
25	39,240					39,240	\$0.00
26	41,390					41,390	\$0.00
27	37,878					37,878	\$0.00
28	71,644					71,644	\$0.00
29	75,938					75,938	\$0.00
30	51,558					51,558	\$0.00
31							#VALUE!
Totals	1,350,656					1,350,656	
Total Cost	\$0.00					\$0.00	

There was a server failure on 9/23 which prevented this report from automatically updating while the server was down. The server was reset on 9/25.

Since the issue wasn't with the meter itself, we were able to manually pull the information from the meter to add to the

9/1/23-9/7/23 262,141
9/8/23 -9/30/23 1,088,515

Monthly Production

October 2023

Monthly Statistics	
Total	1,584,680
Days Pumped	31
Average	51,119
Maximum Total	114,209
on Day	20
Minimum Total	28,814
on Day	8

Daily Statistics	
Maximum	114,209
Minimum	28,814

Location Statistics	
Maximum	1,584,680
at Location	Effluent Flow Meter
Minimum	0
at Location	Future

Date	Effluent Flow Meter				Total	Total Cost
1	34,272				34,272	\$0.00
2	49,582				49,582	\$0.00
3	49,203				49,203	\$0.00
4	48,327				48,327	\$0.00
5	52,038				52,038	\$0.00
6	54,859				54,859	\$0.00
7	53,257				53,257	\$0.00
8	28,814				28,814	\$0.00
9	31,132				31,132	\$0.00
10	31,484				31,484	\$0.00
11	32,558				32,558	\$0.00
12	36,681				36,681	\$0.00
13	64,085				64,085	\$0.00
14	73,427				73,427	\$0.00
15	55,474				55,474	\$0.00
16	52,580				52,580	\$0.00
17	38,266				38,266	\$0.00
18	42,222				42,222	\$0.00
19	64,540				64,540	\$0.00
20	114,209				114,209	\$0.00
21	38,400				38,400	\$0.00
22	43,208				43,208	\$0.00
23	36,386				36,386	\$0.00
24	59,763				59,763	\$0.00
25	73,855				73,855	\$0.00
26	59,230				59,230	\$0.00
27	91,255				91,255	\$0.00
28	46,496				46,496	\$0.00
29	45,181				45,181	\$0.00
30	42,117				42,117	\$0.00
31	41,779				41,779	\$0.00
Totals	1,584,680				1,584,680	
Total Cost	\$0.00				\$0.00	

10/1/23-10/6/23 288,281
 10/7/23 -10/30/23 1,296,399

Monthly Production

November

2023

Monthly Statistics	
Total	1,092,858
Days Pumped	30
Average	36,429
Maximum Total	58,733
on Day	20
Minimum Total	17,997
on Day	19

Daily Statistics	
Maximum	58,733
Minimum	17,997

Location Statistics	
Maximum	1,092,858
at Location	Effluent Flow Meter
Minimum	0
at Location	Future

Date	Effluent Flow Meter			Total	Total Cost
1	39,465			39,465	\$0.00
2	41,174			41,174	\$0.00
3	53,719			53,719	\$0.00
4	40,591			40,591	\$0.00
5	25,699			25,699	\$0.00
6	37,603			37,603	\$0.00
7	41,898			41,898	\$0.00
8	47,774			47,774	\$0.00
9	50,190			50,190	\$0.00
10	36,351			36,351	\$0.00
11	58,420			58,420	\$0.00
12	47,539			47,539	\$0.00
13	24,832			24,832	\$0.00
14	29,288			29,288	\$0.00
15	29,197			29,197	\$0.00
16	28,397			28,397	\$0.00
17	49,884			49,884	\$0.00
18	30,610			30,610	\$0.00
19	17,997			17,997	\$0.00
20	58,733			58,733	\$0.00
21	40,331			40,331	\$0.00
22	51,088			51,088	\$0.00
23	29,929			29,929	\$0.00
24	22,249			22,249	\$0.00
25	23,599			23,599	\$0.00
26	27,633			27,633	\$0.00
27	37,252			37,252	\$0.00
28	22,946			22,946	\$0.00
29	25,108			25,108	\$0.00
30	23,362			23,362	\$0.00
31					#VALUE!
Totals	1,092,858			1,092,858	
Total Cost	\$0.00			\$0.00	

11/1/23-11/7/23

280,149

11/8/23 -11/30/23

812,709

Monthly Production

December 2023

Monthly Statistics	
Total	1,028,129
Days Pumped	31
Average	33,165
Maximum Total	58,451
on Day	21
Minimum Total	16,516
on Day	17

Daily Statistics	
Maximum	58,451
Minimum	16,516

Location Statistics	
Maximum	1,028,129
at Location	Effluent Flow Meter
Minimum	0
at Location	Future

Date	Effluent Flow Meter			Total	Total Cost
1	51,073			51,073	\$0.00
2	42,532			42,532	\$0.00
3	19,294			19,294	\$0.00
4	31,913			31,913	\$0.00
5	27,647			27,647	\$0.00
6	25,582			25,582	\$0.00
7	26,925			26,925	\$0.00
8	38,336			38,336	\$0.00
9	34,795			34,795	\$0.00
10	32,333			32,333	\$0.00
11	25,118			25,118	\$0.00
12	31,205			31,205	\$0.00
13	30,310			30,310	\$0.00
14	38,093			38,093	\$0.00
15	35,576			35,576	\$0.00
16	40,080			40,080	\$0.00
17	16,516			16,516	\$0.00
18	33,369			33,369	\$0.00
19	31,959			31,959	\$0.00
20	36,935			36,935	\$0.00
21	58,451			58,451	\$0.00
22	46,507			46,507	\$0.00
23	26,783			26,783	\$0.00
24	19,210			19,210	\$0.00
25	17,364			17,364	\$0.00
26	33,585			33,585	\$0.00
27	35,340			35,340	\$0.00
28	29,463			29,463	\$0.00
29	38,786			38,786	\$0.00
30	43,618			43,618	\$0.00
31	29,431			29,431	\$0.00
Totals	1,028,129			1,028,129	
Total Cost	\$0.00			\$0.00	

12/1/23-12/7/23 224,966
 12/8/23 -12/31/23 803,163

Monthly Production January 2024

Monthly Statistics	
Total	1,036,633
Days Pumped	31
Average	33,440
Maximum Total on Day	48,978
Minimum Total on Day	17,636

Daily Statistics	
Maximum	48,978
Minimum	17,636

Location Statistics	
Maximum at Location	1,036,633
Minimum at Location	0
Effluent Flow Meter	Future

Date	Effluent Flow Meter			Total	Total Cost
1	26,478			26,478	\$0.00
2	40,938			40,938	\$0.00
3	38,902			38,902	\$0.00
4	42,490			42,490	\$0.00
5	42,311			42,311	\$0.00
6	39,402			39,402	\$0.00
7	21,328			21,328	\$0.00
8	25,900			25,900	\$0.00
9	37,994			37,994	\$0.00
10	24,034			24,034	\$0.00
11	28,805			28,805	\$0.00
12	48,792			48,792	\$0.00
13	24,458			24,458	\$0.00
14	22,909			22,909	\$0.00
15	35,551			35,551	\$0.00
16	34,764			34,764	\$0.00
17	29,138			29,138	\$0.00
18	36,632			36,632	\$0.00
19	43,967			43,967	\$0.00
20	32,735			32,735	\$0.00
21	17,636			17,636	\$0.00
22	20,727			20,727	\$0.00
23	29,127			29,127	\$0.00
24	33,515			33,515	\$0.00
25	35,739			35,739	\$0.00
26	48,978			48,978	\$0.00
27	36,384			36,384	\$0.00
28	36,534			36,534	\$0.00
29	41,358			41,358	\$0.00
30	31,906			31,906	\$0.00
31	27,201			27,201	\$0.00
Totals	1,036,633			1,036,633	
Total Cost	\$0.00			\$0.00	

1/1/24-1/5/24 191,119
1/6/24-1/31/24 845,514

Monthly Production

February 2024

		Date	Effluent Flow Meter							Total	Total Cost
Monthly Statistics		1	31,840							31,840	\$0.00
Total	843,388	2	42,016							42,016	\$0.00
Days Pump	29	3	32,617							32,617	\$0.00
Average	29,082	4	22,275							22,275	\$0.00
		5	26,411							26,411	\$0.00
Maximum T	52,112	6	25,385							25,385	\$0.00
on Day	9	7	25,201							25,201	\$0.00
Minimum T	15,956	8	27,197							27,197	\$0.00
on Day	19	9	52,112							52,112	\$0.00
		10	26,549							26,549	\$0.00
		11	18,090							18,090	\$0.00
		12	36,608							36,608	\$0.00
Daily Statistics		13	48,450							48,450	\$0.00
Maximum	52,112	14	33,033							33,033	\$0.00
Minimum	15,956	15	23,625							23,625	\$0.00
		16	33,118							33,118	\$0.00
		17	23,509							23,509	\$0.00
		18	20,277							20,277	\$0.00
Location Statistics		19	15,956							15,956	\$0.00
Maximum	843,388	20	22,159							22,159	\$0.00
at Location Flow Meter		21	23,901							23,901	\$0.00
Minimum	0	22	25,488							25,488	\$0.00
at Location	Future	23	29,254							29,254	\$0.00
		24	27,510							27,510	\$0.00
		25	22,135							22,135	\$0.00
		26	33,553							33,553	\$0.00
		27	25,806							25,806	\$0.00
		28	32,970							32,970	\$0.00
		29	36,343							36,343	\$0.00
		30									#VALUE!
		31									#VALUE!
		Totals	843,388							843,388	
		Total Cost	\$0.00							\$0.00	

2/1/-2/6 180,544
2/7/24-2/29/ 662,844

Monthly Production

March 2024

Monthly Statistics	
Total	852,598
Days Pumped	31
Average	27,503
Maximum Temperature	45,952
on Day	15
Minimum Temperature	17,131
on Day	#N/A

Daily Statistics	
Maximum	45,952
Minimum	17,131

Location Statistics

Maximum	852,598
at Location	0
Minimum	0
at Location	0

2023						
Date	0				Total	Total Cost
1	36,343				36,343	\$0.00
2	24,601				24,601	\$0.00
3	29,145				29,145	\$0.00
4	24,781				24,781	\$0.00
5	26,532				26,532	\$0.00
6	27,673				27,673	\$0.00
7	25,736				25,736	\$0.00
8	32,221				32,221	\$0.00
9	30,300				30,300	\$0.00
10	20,372				20,372	\$0.00
11	24,995				24,995	\$0.00
12	21,581				21,581	\$0.00
13	23,290				23,290	\$0.00
14	23,010				23,010	\$0.00
15	45,952				45,952	\$0.00
16	21,331				21,331	\$0.00
17	22,409				22,409	\$0.00
18	28,059				28,059	\$0.00
19	28,111				28,111	\$0.00
20	22,695				22,695	\$0.00
21	28,519				28,519	\$0.00
22	30,674				30,674	\$0.00
23	26,241				26,241	\$0.00
24	20,993				20,993	\$0.00
25	27,440				27,440	\$0.00
26	36,036				36,036	\$0.00
27	38,166				38,166	\$0.00
28	40,933				40,933	\$0.00
29	24,704				24,704	\$0.00
30	17,131				17,131	\$0.00
31	22,624				22,624	\$0.00
Totals	852,598				852,598	
Total Cost	\$0.00				\$0.00	

3/1-3/7 194,811

3/8-3/31 657,787

Monthly Production April 2024

Monthly Statistics

Total	1,139,286
Days Pumped	30
Average	37,976
Maximum Total on Day	93,592
Minimum Total on Day	23,363

Daily Statistics

Maximum	93,592
Minimum	23,363

Location Statistics

Maximum at Location	1,139,286
Minimum at Location	0
	Effluent Flow Meter
	Future

Date	Effluent Flow Meter	Total	Total Cost
1	25,289	25,289	\$0.00
2	26,672	26,672	\$0.00
3	93,592	93,592	\$0.00
4	61,265	61,265	\$0.00
5	52,715	52,715	\$0.00
6	30,180	30,180	\$0.00
7	57,747	57,747	\$0.00
8	35,024	35,024	\$0.00
9	26,877	26,877	\$0.00
10	27,084	27,084	\$0.00
11	23,738	23,738	\$0.00
12	32,240	32,240	\$0.00
13	23,875	23,875	\$0.00
14	23,363	23,363	\$0.00
15	32,745	32,745	\$0.00
16	32,950	32,950	\$0.00
17	28,984	28,984	\$0.00
18	29,311	29,311	\$0.00
19	45,861	45,861	\$0.00
20	29,133	29,133	\$0.00
21	43,795	43,795	\$0.00
22	31,372	31,372	\$0.00
23	35,665	35,665	\$0.00
24	31,276	31,276	\$0.00
25	32,211	32,211	\$0.00
26	42,976	42,976	\$0.00
27	42,228	42,228	\$0.00
28	41,059	41,059	\$0.00
29	53,268	53,268	\$0.00
30	46,791	46,791	\$0.00
31			#VALUE!
Totals	1,139,286	1,139,286	
Total Cost	\$0.00	\$0.00	

04/01-04/04

206,818

04/05-04/30

932,468

Monthly Production

May 2024

Monthly Statistics	
Total	1,406,735
Days Pump	31
Average	45,379
Maximum T	72,689
on Day	22
Minimum T	18,101
on Day	24

Daily Statistics	
Maximum	72,689
Minimum	18,101

Location Statistics	
Maximum	1,406,735
at Location	Flow Meter
Minimum	0
at Location	Future

Date	Effluent Flow Meter	Total	Total Cost
1	43,539	43,539	\$0.00
2	43,133	43,133	\$0.00
3	52,812	52,812	\$0.00
4	39,793	39,793	\$0.00
5	44,886	44,886	\$0.00
6	39,001	39,001	\$0.00
7	35,656	35,656	\$0.00
8	49,209	49,209	\$0.00
9	48,343	48,343	\$0.00
10	51,236	51,236	\$0.00
11	33,601	33,601	\$0.00
12	34,102	34,102	\$0.00
13	43,272	43,272	\$0.00
14	40,136	40,136	\$0.00
15	54,788	54,788	\$0.00
16	36,775	36,775	\$0.00
17	45,599	45,599	\$0.00
18	36,720	36,720	\$0.00
19	33,322	33,322	\$0.00
20	47,239	47,239	\$0.00
21	58,162	58,162	\$0.00
22	72,689	72,689	\$0.00
23	68,264	68,264	\$0.00
24	18,101	18,101	\$0.00
25	34,134	34,134	\$0.00
26	43,414	43,414	\$0.00
27	35,635	35,635	\$0.00
28	68,286	68,286	\$0.00
29	59,464	59,464	\$0.00
30	39,507	39,507	\$0.00
31	55,917	55,917	\$0.00
Totals	1,406,735	1,406,735	
Total Cost	\$0.00	\$0.00	

5/01-5/06

263,164

5/7-5/31

1,143,571

Monthly Production June 2024

Monthly Statistics	
Total	1,706,975
Days Pumped	30
Average	56,899
Maximum Total on Day	116,080
Minimum Total on Day	33,300

Daily Statistics	
Maximum	116,080
Minimum	33,300

Location Statistics	
Maximum at Location	1,706,975
Minimum at Location	0
	Future

	Effluent Flow Meter	Total	Total Cost
1	53,506	53,506	\$0.00
2	53,765	53,765	\$0.00
3	53,256	53,256	\$0.00
4	56,419	56,419	\$0.00
5	66,166	66,166	\$0.00
6	63,780	63,780	\$0.00
7	73,732	73,732	\$0.00
8	55,168	55,168	\$0.00
9	59,114	59,114	\$0.00
10	56,870	56,870	\$0.00
11	54,670	54,670	\$0.00
12	50,911	50,911	\$0.00
13	53,700	53,700	\$0.00
14	49,656	49,656	\$0.00
15	42,441	42,441	\$0.00
16	39,368	39,368	\$0.00
17	62,273	62,273	\$0.00
18	54,197	54,197	\$0.00
19	47,482	47,482	\$0.00
20	116,080	116,080	\$0.00
21	62,283	62,283	\$0.00
22	33,300	33,300	\$0.00
23	47,079	47,079	\$0.00
24	76,836	76,836	\$0.00
25	50,516	50,516	\$0.00
26	45,975	45,975	\$0.00
27	57,784	57,784	\$0.00
28	47,303	47,303	\$0.00
29	63,861	63,861	\$0.00
30	59,484	59,484	\$0.00
31			#VALUE!
Totals	1,706,975	1,706,975	
Total Cost	\$0.00	\$0.00	

6/01-6/05 283,112
6/6-6/30 1,423,863

Detailed Cost Breakdown				
Date	0		Total	Total Cost
1	49,534		49,534	\$0.00
2	61,774		61,774	\$0.00
3	70,648		70,648	\$0.00
4	62,138		62,138	\$0.00
5	48,446		48,446	\$0.00
6	50,620		50,620	\$0.00
7	75,421		75,421	\$0.00
8	67,875		67,875	\$0.00
9	80,919		80,919	\$0.00
10	43,818		43,818	\$0.00
11	29,563		29,563	\$0.00
12	50,585		50,585	\$0.00
13	44,986		44,986	\$0.00
14	73,114		73,114	\$0.00
15	95,720		95,720	\$0.00
16	74,133		74,133	\$0.00
17	66,963		66,963	\$0.00
18	37,926		37,926	\$0.00
19	60,779		60,779	\$0.00
20	52,444		52,444	\$0.00
21	44,829		44,829	\$0.00
22	51,835		51,835	\$0.00
23	41,915		41,915	\$0.00
24	32,408		32,408	\$0.00
25	47,773		47,773	\$0.00
26	85,633		85,633	\$0.00
27	52,744		52,744	\$0.00
28	46,959		46,959	\$0.00
29	48,070		48,070	\$0.00
30	57,279		57,279	\$0.00
31	62,156		62,156	\$0.00
Totals	1,769,007		1,769,007	
Total Cost	\$0.00		\$0.00	

Location Statistics	
Maximum at Location	1,769,007
Minimum at Location	0

07/01/2024	49,534
07/02-07/31	1,719,473
	<u>1,769,007</u>



Item For Consideration

For Board Review On: August 21, 2024
Agenda Item Topic: Storm Water Issues

Prepared On: August 14, 2024
Prepared By: Kent Taylor DPW

Report: On July 5, 2024, the Village of Little Chute experienced an intense rainfall event between 12:00pm and 2:00pm. During that time, rain totals amounted to approximately 2.5 inches. Several areas of the Village experienced elevated water levels (flooding) on public and private property. Village employees responded to set up signage for road closures, remove obstructions from storm water inlets, and to evaluate the storm water system performance.

The areas affected by the storm were.

- the 1400 block of Ridgeview Lane
- the 900 block of Sunnydale Lane
- the 300 block of Appletree Lane & 1600 block of Orchard Lane
- the 1800 block of Homewood Ct.
- Joyce Street @ Rosehill Road
- West Florida & Miami Circle
- The 900 block of Manor Place
- West Florida Ave @ Holland Road

The Village is aware that the aforementioned areas and other areas have been affected by heavy precipitation events recently and historically.

In the area of Appletree Lane and Orchard Lane, flooding was present on private property and in the Village right-of-way. Property owners in the area report that this problem has been an issue for several decades. In July, the property owners contacted the Village and took time to meet on site to discuss potential remedies to the problem. The property owners desire The Village to formally address the storm water problem. The property owners from the area would like to address the Village Board. This IFC is the beginning of that process.

The 5-year Capital Improvement Plan (CIP) for 2025-2029 was submitted to the Village Board in June of 2024. The 5-year CIP is scheduled to be approved with the 2025 Budget in



Item For Consideration

November 2024. No reference to storm water enhancements/improvements for the Appletree/Orchard area was included in the 2025-2029 CIP. Following past practice, the earliest this would be introduced as a CIP project would be June 2025. The property owners have expressed a desire to have something done sooner than later. At this point in time, no formal engineering study has been done, and no cost estimates have been calculated.

Public Works will look at historic drainage plans and record drawings to determine if the area was built to plan. We will determine what options are available for the Appletree/Orchard area and prepare to include any improvements when the next 5-year CIP is introduced in 2025. Other areas in the Village that have storm water issues will also be considered.

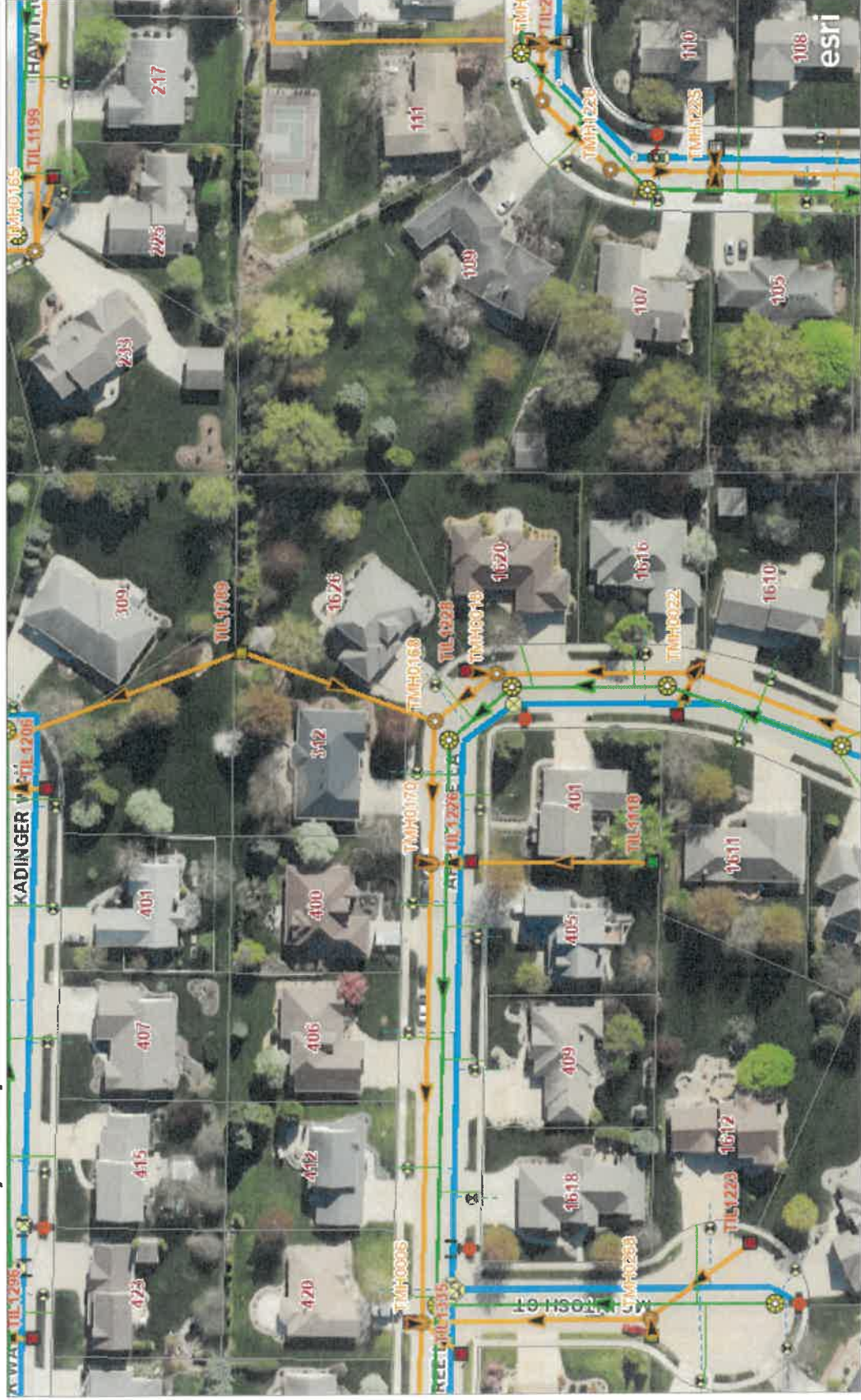
Fiscal Impact: Unknown currently.

Recommendation/Board Action: No action required for discussion at this time.

Respectfully Submitted,

Kent Taylor, Department of Public Works

Combined Utility GIS System



Combined Utility GIS Map

Outagamie County GIS | REL, VOLC | Outagamie County, Village of Little Chute, REL & Associates, Inc.



Item For Consideration

For Commission Review On: 08/20/2024

Prepared On: 08/08/2024

Prepared By: Jerry Verstegen

Agenda Item Topic: Review and Approve Truck Bids

Report: The Village of Little Chute Water Department currently owns and maintains (2) vehicles for the operation of its water system. The Department did operate (3) vehicles in the past, but in 2004, it was decided that the Village would supply (2) vehicles and MCO would supply the third vehicle as needed. In 2011, MCO provided (1) full time vehicles and the Village continued to supply (2) vehicles, the Village reimbursed MCO for the miles used per the IRS rate. Currently the Department operates and requires (2) Village owned vehicles and (2) MCO vehicles. It is imperative that the Village supplies at a minimum of (2) vehicles with Village logos for customer interactions.

The Department sent out RFP's to (5) dealerships to replace the 2013 Ford F-150 pickup truck.. We received (3) proposals back, which all met our RFP requirements:

- | | | |
|--------------------|-------------|------------------------------|
| • Les Stump Ford | \$36,148.00 | Delivery Date: December 2024 |
| • Bergstrom Neenah | \$36,232.50 | Delivery Date: October 2024 |
| • All Work Ford | \$39,926.00 | Delivery Date: ASAP |

This vehicle is primarily used for meter change outs and meter reading, it is also outfitted to perform most water system jobs.

The current vehicle is a 2013 Ford F-150 with 111,000 miles on it, the body is deteriorating and there have been several mechanical issues.

The Department budgeted for \$42,500 for replacement and outfitting of new vehicle.

Fiscal Impact: \$36,148.00 for new vehicle, and \$4000 to outfit vehicle with toolboxes, racks, meter reading equipment and safety lights.



Item For Consideration

Recommendation/Board Action: Water Department recommends approving bid for \$36,148.00 from Les Stump Ford

Respectfully Submitted,



MIDWEST CONTRACT OPERATIONS, INC.
P.O. BOX 418 MENASHA, WI 54952-0418

Monthly Superintendent Report/Update

To: Village of Little Chute Water Commission

From: Jerry Verstegen, Water Utility Supt. (MCO)

Month of: 07-2024

Updates for current, past and ongoing Water Department projects and areas of concern:

1. Plants/Treatment

- Air Compressor failure at Well # 1, corrected.

2. Distribution

- 7/23/2024 Replaced Curb Box & Rod @ 814 Michigan Lane
- (125) hydrants are being painted

3. Meters

- All meters have been shipped.
- Batch of meter change out letters mailed out, we are behind in meter changes due to NO Meters

4. General Water

- Continued work on EPA/DRN Lead Service Audit
- (60) Lead and Coper samples collected and tested, all below action level
- (20) Disconnection notices delivered for not allowing meter access, all but (1) responded and meter changes were performed.

Sam Schepp
Jerry Verstegen

2024 Pumpage Totals

8/14/2024

Date	Pump age x 1000								Discharge Sanitary				Blend and Pump age %					
	Wells			Effluent			Well	Booster	Well	Sanitary	Sanitary	Sanitary	Blend %			% Pumped by Plant		
	# 1	# 3	# 4	# 1	# 3	# 4	Totals	Totals	# 1	# 3	# 4	Totals	# 1	# 3	# 4	# 1	# 3	# 4
7/1	813	501	770	728	508	822	2,084	2,058	38.0	12.0	28.8	78.8	9.8%	10.5%	4.3%	39.0%	24.0%	36.9%
7/2	495	414	792	527	467	814	1,701	1,808	28.0	24.0	31.5	83.5	9.9%	11.5%	4.1%	29.1%	24.3%	46.6%
7/3	797	0	909	710	0	839	1,706	1,549	52.0	0.0	29.2	81.2	9.9%		4.4%	46.7%	0.0%	53.3%
7/4	147	901	719	181	775	590	1,767	1,546	10.0	35.0	32.2	77.2	9.5%	11.0%	4.2%	8.3%	51.0%	40.7%
7/5	802	0	509	728	0	604	1,311	1,332	38.0	0.0	26.5	64.5	9.9%		4.3%	61.2%	0.0%	38.8%
7/6	107	663	686	103	653	657	1,456	1,413	9.0	36.0	26.5	71.5	9.3%	11.4%	4.3%	7.3%	45.5%	47.1%
7/7	804	107	747	770	151	801	1,658	1,722	48.0	0.0	27.0	75.0	10.0%	8.9%	4.3%	48.5%	6.5%	45.1%
7/8	419	742	775	448	681	762	1,936	1,891	19.0	36.0	28.0	83.0	9.8%	11.4%	4.3%	21.6%	38.3%	40.0%
7/9	656	520	763	576	552	829	1,939	1,957	38.0	36.0	27.0	101.0	9.9%	11.3%	4.3%	33.8%	26.8%	39.4%
7/10	415	813	839	435	751	772	2,067	1,958	28.0	36.0	29.5	93.5	9.9%	11.2%	4.4%	20.1%	39.3%	40.6%
7/11	665	437	776	638	426	773	1,878	1,837	29.0	0.0	37.0	66.0	9.8%	9.9%	4.3%	35.4%	23.3%	41.3%
7/12	663	456	726	586	445	752	1,845	1,783	38.0	36.0	28.1	102.1	10.0%	11.8%	4.4%	35.9%	24.7%	39.3%
7/13	255	763	845	291	744	693	1,863	1,728	19.0	36.0	27.8	82.8	9.4%	11.0%	4.3%	13.7%	41.0%	45.4%
7/14	660	324	641	582	363	780	1,625	1,725	28.0	0.0	32.0	60.0	10.0%	10.1%	4.4%	40.6%	19.9%	39.4%
7/15	375	734	795	412	671	830	1,904	1,913	28.0	35.0	27.4	90.4	9.6%	11.4%	4.3%	19.7%	38.6%	41.8%
7/16	813	279	809	724	318	798	1,901	1,840	48.0	25.0	28.7	101.7	10.0%	12.1%	4.4%	42.8%	14.7%	42.6%
7/17	273	792	803	261	755	826	1,868	1,842	9.0	36.0	32.1	77.1	9.5%	11.1%	4.3%	14.6%	42.4%	43.0%
7/18	277	730	839	305	687	791	1,846	1,783	19.0	35.0	29.8	83.8	9.7%	11.3%	4.4%	15.0%	39.5%	45.4%
7/19	854	299	869	831	289	818	2,022	1,938	38.0	12.0	38.5	88.5	10.0%	9.6%	4.3%	42.2%	14.8%	43.0%
7/20	407	594	720	355	582	685	1,721	1,622	28.0	36.0	32.7	96.7	9.6%	11.9%	4.3%	23.6%	34.5%	41.8%
7/21	806	110	681	782	152	862	1,597	1,796	47.0	0.0	26.2	73.2	9.9%	8.8%	4.1%	50.5%	6.9%	42.6%
7/22	666	714	900	603	698	901	2,280	2,202	29.0	36.0	25.4	90.4	9.9%	11.4%	4.5%	29.2%	31.3%	39.5%
7/23	233	802	930	280	744	855	1,965	1,879	11.0	36.0	38.3	85.3	9.9%	11.1%	4.2%	11.9%	40.8%	47.3%
7/24	811	366	806	718	386	859	1,983	1,963	46.0	12.0	32.3	90.3	9.9%	10.5%	4.3%	40.9%	18.5%	40.6%
7/25	432	803	904	436	793	874	2,139	2,103	28.0	36.0	30.4	94.4	9.7%	11.1%	4.5%	20.2%	37.5%	42.3%
7/26	455	715	863	412	653	784	2,033	1,849	28.0	36.0	37.4	101.4	9.9%	11.4%	4.2%	22.4%	35.2%	42.4%
7/27	810	0	793	775	0	771	1,603	1,546	38.0	0.0	28.3	66.3	9.9%		4.4%	50.5%	0.0%	49.5%
7/28	335	832	747	367	814	790	1,914	1,971	19.0	36.0	32.2	87.2	9.6%	11.1%	4.3%	17.5%	43.5%	39.0%
7/29	634	461	841	556	496	870	1,936	1,922	38.0	23.0	28.5	89.5	9.9%	10.0%	4.3%	32.7%	23.8%	43.4%
7/30	275	815	854	308	771	862	1,944	1,941	10.0	36.0	33.3	79.3	9.8%	11.3%	4.3%	14.1%	41.9%	43.9%
7/31	672	605	861	593	602	860	2,138	2,055	37.0	12.0	34.3	83.3	9.8%	10.6%	4.4%	31.4%	28.3%	40.3%
Avg	543	526	791	517	514	791	1,859	1,822	30	24	31	84	0	0	0	0	0	0
Total	16,826	16,292	24,512	16,021	15,927	24,524	57,630	56,472	923	729	947	2,599	3	3	1	9	9	13

2024 Treatment Totals

8/14/2024

	Chemical Pounds									Doseage					
	Chlorine			Silicate			Salt			Chlorine			Silicate		
	# 1	# 3	# 4	# 1	# 3	# 4	# 1	# 3	# 4	# 1	# 3	# 4	# 1	# 3	# 4
1-Jul	56.4	40	55.4	194	168	284	3,640	2,600	5,460	1.04	1.20	1.08	8.44	11.86	13.05
2-Jul	34.2	35	58.8	118	134	299	3,640	1,300	6,500	1.04	1.27	1.11	8.43	11.45	13.35
3-Jul	59.4	0	64.8	162	0	324	2,600	2,600	5,200	1.12		1.07	7.19		12.61
4-Jul	9.6	75.6	51.6	28	302	285	5,720	0	6,500	0.98	1.26	1.08	6.74	11.86	14.02
5-Jul	58.8	0	37.2	156	0	200	1,040	3,900	5,200	1.10		1.10	6.88		13.90
6-Jul	8.2	46.2	50.8	18	206	260	3,640	0	5,200	1.15	1.04	1.11	5.95	10.99	13.41
7-Jul	57	8.6	53.6	156	38	285	780	3,900	5,200	1.06	1.20	1.08	6.86	12.56	13.50
8-Jul	39.6	48.8	52.2	120	280	311	4,680	0	5,200	1.42	0.99	1.01	10.13	13.35	14.19
9-Jul	41.8	42	54	178	168	298	1,820	3,900	5,200	0.96	1.21	1.06	9.60	11.43	13.81
10-Jul	30.2	68.4	61	122	262	325	3,640	3,900	5,200	1.09	1.26	1.09	10.40	11.40	13.70
11-Jul	50	36	54.6	184	138	298	2,860	3,900	7,800	1.13	1.23	1.05	9.79	11.17	13.58
12-Jul	49.4	38	52.8	176	148	297	2,600	0	5,200	1.12	1.25	1.09	9.39	11.48	14.47
13-Jul	17	62.2	60.2	56	242	325	3,640	3,900	5,200	1.00	1.22	1.07	7.77	11.22	13.60
14-Jul	49.6	26.4	47.4	148	106	246	1,820	3,900	6,500	1.13	1.22	1.11	7.93	11.57	13.57
15-Jul	25	60.4	57	94	236	311	2,860	0	5,200	1.00	1.23	1.07	8.87	11.37	13.84
16-Jul	61.6	22.4	58	58	84	298	2,600	3,900	5,200	1.14	1.20	1.07	2.52	10.65	13.03
17-Jul	18.4	63.6	57.8	44	246	312	4,680	2,600	6,500	1.01	1.20	1.08	5.70	10.99	13.74
18-Jul	16.6	62.4	61.2	66	234	311	780	3,900	5,200	0.90	1.28	1.09	8.43	11.34	13.11
19-Jul	52.4	23.4	64	202	98	337	1,820	3,900	7,800	0.92	1.17	1.10	8.37	11.59	13.72
20-Jul	24	47.4	52	100	182	259	3,640	1,300	6,500	0.88	1.20	1.08	8.69	10.84	12.72
21-Jul	43.2	8.8	49	182	35	259	2,860	4,160	5,460	0.80	1.20	1.08	7.99	11.25	13.45
22-Jul	50.4	56.8	65	148	217	325	4,420	0	3,900	1.13	1.19	1.08	7.86	10.75	12.77
23-Jul	17.8	66.4	62.6	60	234	364	2,860	3,900	7,800	1.15	1.24	1.01	9.11	10.32	13.84
24-Jul	66	30.4	57.8	234	110	311	1,560	3,900	6,500	1.22	1.24	1.07	10.21	10.63	13.65
25-Jul	39	64.8	64.2	132	258	336	3,900	1,300	5,200	1.35	1.21	1.06	10.81	11.36	13.15
26-Jul	39.6	57.8	61.8	136	228	325	2,600	3,900	7,800	1.30	1.21	1.07	10.57	11.28	13.32
27-Jul	71.2	0	56.6	222	0	310	2,860	3,900	5,200	1.32		1.07	9.69		13.83
28-Jul	29.2	65	54.6	88	258	273	3,640	0	6,500	1.31	1.17	1.10	9.29	10.97	12.93
29-Jul	50.2	36.4	62	164	142	324	1,820	3,900	5,200	1.19	1.18	1.10	9.15	10.90	13.63
30-Jul	20.8	64.8	62	60	254	311	3,640	2,600	6,500	1.13	1.19	1.09	7.72	11.02	12.88
31-Jul	51.2	47.6	62.8	156	184	324	1,040	3,900	6,500	1.14	1.18	1.09	8.21	10.76	13.31
Avg	39.9	42.1	56.9	127.8	167.5	300.9	2,894	2,608	5,888	1.1	1.2	1.1	8.3	11.3	13.5
Total	1,237.8	1,305.6	1,762.8	3,962.0	5,192.0	9,327.0	89,700	80,860	182,520	34.2	33.7	33.4	258.7	316.4	417.7

2024 System Samples

8/14/2024

Date	North West						North East						South West						South East					
Week	Total	Free	Ph	Iron	Silc	Hard	Total	Free	Ph	Iron	Silc	Hard	Total	Free	Ph	Iron	Silc	Hard	Total	Free	Ph	Iron	Silc	Hard
1/1	0.49	0.33	7.5	0.13	19	10	0.38	0.32	7.4	0.06	20	8	0.52	0.47	7.4	0.12	15	9	0.40	0.32	7.4	0.13	17	9
1/8	0.45	0.38	7.5	0.03	15	14	0.32	0.27	7.6	0.02	18	10	0.48	0.42	7.5	0.05	8	11	0.49	0.41	7.5	0.03	10	10
1/15	0.49	0.38	7.6	0.14	19	8	0.31	0.26	7.6	0.04	21	7	0.47	0.41	7.6	0.09	19	8	0.41	0.31	7.6	0.11	15	9
1/22	0.41	0.29	7.5	0.02	16	10	0.53	0.32	7.6	0.03	18	11	0.34	0.26	7.6	0.05	21	7	0.24	0.14	7.7	0.05	14	9
1/29	0.35	0.28	7.5	0.10	22	16	0.36	0.30	7.5	0.11	14	13	0.40	0.34	7.5	0.16	19	6	0.39	0.35	7.6	0.05	18	10
2/5	0.34	0.26	7.5	0.02	15	15	0.24	0.19	7.6	0.02	17	8	0.50	0.40	7.6	0.03	19	4	0.43	0.37	7.5	0.03	15	8
2/12	0.35	0.29	7.4	0.09	21	7	0.29	0.25	7.6	0.10	23	9	0.43	0.35	7.6	0.11	23	10	0.35	0.31	7.5	0.05	15	9
2/19	0.35	0.31	7.4	0.07	14	5	0.42	0.33	7.3	0.09	15	9	0.28	0.22	7.6	0.04	16	5	0.32	0.20	7.2	0.07	18	9
2/26	0.34	0.22	7.4	0.10	18	12	0.36	0.24	7.5	0.11	14	12	0.40	0.34	7.5	0.14	22	5	0.28	0.18	7.4	0.06	18	9
3/4	0.30	0.28	7.4	0.06	17	10	0.38	0.28	7.6	0.12	17	8	0.38	0.30	7.6	0.10	23	10	0.31	0.24	7.4	0.09	12	10
3/11	0.42	0.31	7.6	0.10	20	9	0.54	0.43	7.4	0.11	18	11	0.38	0.31	7.3	0.12	20	9	0.47	0.39	7.5	0.12	17	11
3/18	0.39	0.20	7.5	0.05	16	12	0.25	0.22	7.4	0.12	13	10	0.50	0.34	6.8	0.02	21	12	0.34	0.26	7.2	0.05	20	7
3/25	0.38	0.35	7.6	0.01	18	10	0.38	0.32	7.5	0.02	14	9	0.41	0.36	7.3	0.03	14	6	0.29	0.26	7.4	0.02	13	7
4/1	0.38	0.32	7.5	0.06	19	11	0.25	0.21	7.5	0.13	17	11	0.54	0.48	7.5	0.13	22	11	0.31	0.28	7.5	0.05	21	9
4/8	0.32	0.26	7.4	0.12	16	11	0.28	0.21	7.4	0.03	13	6	0.42	0.35	7.3	0.05	13	9	0.50	0.43	7.5	0.06	13	9
4/15	0.34	0.25	7.3	0.04	15	8	0.26	0.21	7.5	0.02	12	11	0.32	0.21	7.5	0.03	16	7	0.32	0.30	7.2	0.04	13	9
4/22	0.29	0.23	7.7	0.02	22	9	0.25	0.20	7.5	0.06	23	9	0.23	0.21	7.5	0.10	12	9	0.28	0.20	7.8	0.12	13	9
4/29	0.28	0.25	7.2	0.02	16	10	0.30	0.28	7.2	0.01	16	10	0.46	0.37	7.5	0.03	13	9	0.35	0.32	7.4	0.02	16	10
5/6	0.49	0.36	7.6	0.05	23	12	0.28	0.23	7.4	0.08	24	11	0.54	0.46	7.8	0.12	19	6	0.41	0.34	7.5	0.03	21	9
5/13	0.39	0.32	7.2	0.07	17	10	0.23	0.21	7.4	0.08	20	10	0.36	0.28	7.5	0.09	18	6	0.24	0.20	7.4	0.06	17	8
5/20	0.42	0.30	7.5	0.02	11	8	0.32	0.24	7.3	0.01	12	12	0.54	0.42	7.1	0.07	12	10	0.56	0.45	7.5	0.01	19	10
5/27	0.22	0.20	7.5	0.01	18	12	0.18	0.12	7.5	0.01	24	10	0.31	0.18	8.0	0.06	19	8	0.32	0.19	7.5	0.01	11	11
6/3	0.48	0.41	7.5	0.10	15	10	0.28	0.24	7.6	0.05	14	10	0.39	0.33	7.7	0.11	14	6	0.52	0.48	7.4	0.04	14	10
6/10	0.48	0.41	7.8	0.05	17	6	0.24	0.21	7.6	0.06	23	10	0.43	0.33	7.8	0.05	22	8	0.49	0.40	7.4	0.11	19	9
6/17	0.28	0.20	7.5	0.08	14	10	0.35	0.26	7.5	0.12	12	12	0.33	0.30	8.0	0.11	15	8	0.30	0.14	7.6	0.13	10	12
6/24	0.26	0.22	7.6	0.10	17	13	0.18	0.12	7.5	0.05	17	13	0.58	0.49	7.6	0.09	18	7	0.32	0.29	7.5	0.08	20	8
7/1	0.28	0.24	7.7	0.08	14	10	0.28	0.22	7.7	0.08	14	11	0.48	0.42	7.6	0.10	12	10	0.28	0.18	7.5	0.06	19	10
7/8	0.39	0.36	7.5	0.04	18	11	0.33	0.26	7.5	0.05	14	11	0.40	0.38	7.4	0.02	13	6	0.24	0.21	7.3	0.03	14	9
7/15	0.44	0.27	7.6	0.06	20	11	0.27	0.20	7.8	0.05	18	12	0.26	0.20	7.4	0.06	18	10	0.27	0.21	7.4	0.03	15	10
7/22	0.30	0.23	7.4	0.09	21	10	0.32	0.27	7.5	0.09	17	11	0.30	0.23	7.6	0.09	17	10	0.28	0.16	7.5	0.08	15	10
7/29	0.28	0.22	7.3	0.08	14	10	0.40	0.35	7.3	0.06	10	11	0.47	0.36	7.5	0.06	20	9	0.26	0.20	7.2	0.08	14	9
8/5	0.27	0.23	7.4	0.05	17	9	0.32	0.28	7.5	0.06	15	9	0.48	0.43	7.6	0.09	20	8	0.25	0.21	7.5	0.08	16	9
8/12	0.26	0.22	7.4	0.06	17	8	0.34	0.28	7.3	0.07	18	10	0.47	0.35	7.4	0.08	22	8	0.29	0.23	7.6	0.06	19	9

2024 PUMPING AND WASTE REPORT

	Pump age x 1000														
	Well Pumps			Booster Pumps			Well	Booster	Sanitary			Pounds of Chloride			Sanitary
	Well # 1	Well # 3	Well # 4	Well # 1	Well # 3	Well # 4	Totals	Totals	Well # 1	Well # 3	Well # 4	Well # 1	Well # 3	Well # 4	Totals
Jan-24	13,543	12,466	22,089	12,895	12,289	21,808	48,098	46,992	663	547	776	1,986	4,712	3,706	9,752
Feb-24	12,965	13,407	18,818	12,458	13,155	18,384	45,190	43,997	646	614	709	1,969	4,558	4,195	8,864
Mar-24	13,932	13,061	21,299	13,280	12,886	21,250	48,292	47,416	748	584	881	2,213	4,653	4,116	10,062
Apr-24	16,566	11,938	21,339	15,688	11,811	21,319	49,843	48,818	910	546	842	2,298	5,315	3,470	9,700
May-24	15,321	14,956	24,209	14,679	14,624	23,936	54,486	53,239	855	679	932	2,466	4,984	4,511	10,977
Jun-24	12,927	15,709	22,552	12,408	15,409	22,465	51,188	50,282	726	728	866	2,320	4,321	4,905	10,504
Jul-24	16,826	16,292	24,512	16,021	15,927	24,524	57,630	56,472	923	729	947	2,599	5,441	4,905	11,072
Average	14,583	13,976	22,117	13,918	13,729	21,955	50,675	49,602	782	632	850	2,264	4,855	4,258	10,133
Total	102,080	97,829	154,818	97,429	96,101	153,686	354,727	347,216	5,471	4,427	5,952	15,850	33,984	29,808	70,930



Engineering Department &
Department of Public Works
Monthly Utility Commission
Report for July 2024

OPERATIONS NOTES:

Sanitary Sewer

- Employees maintained and read laser meters in the sanitary collection system.
- Monitored sanitary sewer system for inflow and infiltration (I&I), televised sanitary mains, and sanitary manholes were inspected.
- Jetted 12,611 ft of main line and flushed dead ends.

Storm Sewer

- Development site plans were reviewed.
- Cleared plugged storm inlets.
- Hauled out street sweepings from yard waste site.
- Televised storm sewer.

Storm Ponds

- Checked outfalls.
- Debris removed from Industrial Pond grates.
- Mowed storm pond perimeters.

Water

- Nothing to report.

ENGINEERING NOTES: 2024 Utility Projects – July

West Evergreen Drive - Utility Project

Don Hietpas & Sons continued utility construction replacing the existing copper water services with the new polyethylene water services and related fittings. Crews completed the installation of new storm sewer and sanitary sewer laterals. The utility construction contract was completed in June.

West Evergreen Drive - Paving Project

Vinton has completed the mainline pavement; crews continue paving for the concrete multi-use trail and driveway aprons.

Top Priorities for August 2024

West Evergreen Drive - Utility Project

Hietpas completed utility construction during the second week of June.

West Evergreen Drive - Paving Project

Vinton Construction has been awarded the 2024 paving contract for West Evergreen Drive; Vinton began the excavation and grading in preparation for concrete paving during the week of June 17th. Vinton has completed the mainline pavement; crews continue paving efforts for the concrete multi-use trail and driveway aprons.

Founders Estates Subdivision - Utility Project

Hietpas crews have completed construction of the public utilities, Frederickson has completed the road grading and gravel placement in preparation for future road construction. Private utilities have been or are in the process of being installed. Village Staff have reached an agreement with the developer regarding the concrete street pavement. Vinton Construction has been contracted by the Developer to construct the concrete street; Vinton has begun paving operations and has completed the mainline pavement; crews continue with hand pours paving the remaining intersections. Multiple residential duplex sites have broken ground, excavation for foundations and building construction is underway.

Railroad Quiet Zone:

Staff have been working with the Federal Railroad Administration (FRA) to coordinate the implementation of the Village of Little Chute Railroad Quiet Zone. The Notice of Intent (NOI) to establish the 24-Hour Railroad Quiet Zone for Village crossings has been submitted. The NOI is required by the Federal Railroad Administration (FRA) as part of the process and gives notice to all effected parties/RR authorities including the FRA, CN, WisDOT, Outagamie County, Hartwig Family, and the Office of the Commissioner of Railroads. As part of this notice, the Village has developed a packet of information further describing the proposed Quiet Zone and additional information as required, recipients now have 60 days to review the current conditions and supplementary information and provide comments.

After the 60-day review period and NOI comments have been implemented, if required. A Notice of Establishment (NOE) will be submitted to the same parties along with a packet of additional information/required documentation to establish the 24-Hour Quiet Zone. Thirty (30) days after submittal of the NOE, the Quiet Zone is considered established, no train horn signs will be posted, and train horns should no longer be sounded.

Miscellaneous:

Engineering Staff continues work on the 2024 West Evergreen Drive (Phase 3) Reconstruction Project which is located between Holland Road and Vandenbroek Road. Work to document and inspect on-site construction (paving) efforts as well as construction administration and management.

Construction of the Ebben Trail Bridges No. 1 & 2 is complete. Staff have worked with Milbach Construction to administer final quantities and pay application to complete project closeout. A final punch-list has been created to address any remaining items. Milbach has been working on completing tasks from this list and are near completion of the remaining items.

Engineering continues reviewing, issuing, and inspecting all right of way permits for the Village. Continued efforts to investigate and repair utilities that have been impacted or damaged during the TDS and/or AT&T construction process. Staff are working with Bug Tussel on permitting their proposed fiber project which will impact the Village on Rosehill Road and Holland Road.

Efforts continue to assist other departments with daily tasks as well as any special projects or requests. Staff to focus on any questions related to the ongoing audit, preparing documents and cost estimates for future CIP projects, and assisting Parks Dept. with upcoming construction projects.

Engineering staff continues to coordinate with WisDOT and private utilities with work related to the HWY "41" Corridor construction projects.

**VILLAGE OF LITTLE CHUTE
SEWER UTILITY
BUDGET STATUS**

	2024		2023	% Change	\$ Change
	BUDGET	ACTUAL	ACTUAL	from PY	from PY
	Revenue = >	JULY YTD			
REVENUE					
Multi-family Residential	230,000	133,876	133,216	0.50%	660
Residential	1,000,000	689,831	696,345	-0.94%	(6,514)
Commercial	280,000	137,845	161,707	-14.76%	(23,862)
Industrial	1,350,000	842,346	724,580	16.25%	117,766
Public Authority	440,000	252,390	243,584	3.62%	8,806
Sales Subtotal	3,300,000	2,056,288	1,959,432	4.9%	96,856
% of CY Budget		62%			
All Other	340,837	174,319	237,896	-26.72%	(63,577)
TOTAL REVENUE	3,640,837	2,230,608	2,197,328	1.51%	33,280
% of CY Budget		61%			

	2024		2023		
	BUDGET	ACTUAL	ACTUAL		
	Expense = >	JULY YTD			
EXPENSES					
Financing	262,318	152,181	148,112	2.75%	4,069
Treatment	2,781,803	1,307,484	1,489,007	-12.19%	(181,523)
Collection	228,570	122,380	112,649	8.64%	9,731
Billing	170,092	84,635	83,177	1.75%	1,458
Admin	221,209	110,693	130,534	-15.20%	(19,841)
TOTAL EXPENSE	3,663,992	1,777,373	1,963,479	-9.48%	(186,106)
% of CY Budget		49%			

CASH FLOW -OPERATIONS	(23,155)	453,235	233,849
ADD: DEPRECIATION	250,000	145,831	141,162
ADD: NEW DEBT	-	-	-
LESS: PRINCIPAL PAID	(40,000)	(40,000)	(40,000)
LESS: FIXED ASSETS	(16,009)	(3,015)	(311,464)
NET CASH FLOW	170,836	556,051	23,547

NOTE :

Landfill revenue for Sewer Utility is billed on a quarterly billing; the first and second quarters have been billed. Strength invoices have not been issued to Bel Brands or Nestle for July. Oh Snap has not been billed for strength January through July (Jan-June invoiced in early August). Agropur volume increase accounts for most of the industrial increase from prior year. Commercial decrease mainly related to decrease in water usage at Absolute Supply, LLC. The Water Utility paying the correct rate accounts for the majority of the public authority increase.

Continue to see interest and investment income impacted as result of market changes. The unrealized loss that exists now **will not** be recognized as long as the assets are held until maturity. The Village invests in varying maturities to match cash flow needs. An unrealized loss exists when a longer term asset the Village owns price has declined in the market place due to varying interest rates. Each month end, Generally Accepted Accounting Principles require that we record an unrealized loss (or gain) to recognize market impacts. The market to face value total for the Village at the end of July is a \$114,345 unrealized loss. The positive news is that interest earnings have escalated from minimal returns in past.

Treatment: Volume is down 25,717,000 gallons compared to 2023 resulting in decreased cost of \$181,523. Chlorides have increased 163,627 lbs. Collection is down as less labor dedicated to collection YTD this year compared to previous due to other priorities plus less vehicle repair costs.

Property, Auto and Workers Compensation premiums for the first three quarters have been paid so nine months of expense have hit income statement.

Capital Contributions (revenue) are not recorded until year end (capital assets paid for by TID or contributed by developers) in the Sewer Utility (\$238,000).

VILLAGE OF LITTLE CHUTE 2024 BUDGET

SEWER UTILITY DEBT SCHEDULE

2019 Refunding

	Sanitary		
<u>Year</u>	<u>Principal</u>	<u>Interest</u>	<u>Total</u>
2024	40,000.00	3,600.00	43,600.00
2025	35,000.00	2,400.00	37,400.00
2026	45,000.00	1,350.00	46,350.00
	120,000.00	7,350.00	127,350.00

TOTAL DEBT

	Sanitary		
<u>Year</u>	<u>Principal</u>	<u>Interest</u>	<u>Total</u>
2024	40,000.00	3,600.00	43,600.00
2025	35,000.00	2,400.00	37,400.00
2026	45,000.00	1,350.00	46,350.00
	120,000.00	7,350.00	127,350.00

VILLAGE OF LITTLE CHUTE
WATER UTILITY
BUDGET STATUS

	2024		2023	% Change	\$ Change
	BUDGET	ACTUAL	ACTUAL	from PY	from PY
	Revenue = >	JULY YTD			
REVENUE					
Multi-family Residential	140,000	78,349	78,235	0.15%	114
Residential	950,000	531,529	548,191	-3.04%	(16,662)
Commercial	190,000	96,181	107,164	-10.25%	(10,983)
Industrial	600,000	408,337	366,532	11.41%	41,805
Private Fire	65,000	42,449	40,449	4.94%	2,000
Public Fire	428,000	251,250	250,274	0.39%	976
Public Authority	50,000	24,734	33,336	-25.80%	(8,602)
Sales Subtotal	2,423,000	1,432,829	1,424,181	0.6%	8,648
% of CY Budget		59%			
All Other	540,472	78,157	56,450	38.45%	21,707
TOTAL REVENUE	2,963,472	1,510,986	1,480,631	2.05%	30,355
% of CY Budget		51%			
EXPENSES					
	Expense = >	JULY YTD	2023		
	BUDGET	ACTUAL	ACTUAL		
Financing	815,179	460,674	432,606	6.49%	28,068
Wells/Source	60,500	11,764	11,508	2.22%	256
Pumping	299,438	147,708	154,954	-4.68%	(7,246)
Treatment	704,626	419,812	371,229	13.09%	48,583
Distribution	908,591	391,726	489,934	-20.05%	(98,208)
Billing	87,824	42,122	36,587	15.13%	5,535
Admin	207,294	104,267	103,120	1.11%	1,147
TOTAL EXPENSE	3,083,452	1,578,073	1,599,938	-1.37%	(21,865)
% of CY Budget		51%			
CASH FLOW -OPERATIONS	(119,980)	(67,087)	(119,307)		
ADD: DEPRECIATION	545,000	317,800	306,250		
ADD: NEW DEBT	-	-	-		
LESS: PRINCIPAL PAID	(389,517)	(293,463)	(186,464)		
LESS: FIXED ASSETS	(16,593)	(4,481)	(419,190)		
NET CASH FLOW	18,910	(47,231)	(418,711)		

NOTE :

NOTE :

Continue to see interest and investment income impacted as result of market changes. The unrealized loss that exists now will **not** be recognized as long as the assets are held until maturity. The Village invests in varying maturities to match cash flow needs. An unrealized loss exists when a longer term asset the Village owns price has declined in the market place due to varying interest rates. Each month end, Generally Accepted Accounting Principles require that we record an unrealized loss (or gain) to recognize market impacts. The market to face value total for the Village at the end of July is a \$114,345 unrealized loss. The positive news is that interest earnings have escalated from minimal returns in past.

Property, Auto and Workers Compensation premiums for the first three quarters have been paid so nine months of expense have hit income statement.

Agropur increased water consumption accounts for majority of increase at industrial level. The commercial decrease is related to lower usage at Absolute Supply, LLC.

Financing has increased as the previous required regulatory amortization is now complete (\$31,400 credit per year).

Treatment expense is up due to paying accurate rate to the Sewer Utility for sanitary discharge. Distribution variance as not as many meter replacements completed this year compared to same time last year due to lead monitoring focus. Billing increase from prior year is charge for more cellular reads and fully staffed at Accounts Payable Clerk level (allocation of portion of wages).

Capital Contributions (revenue) are not recorded until year end (capital assets paid for by TID or contributed by developers) in the Water Utility (\$450,000).

VILLAGE OF LITTLE CHUTE 2024 BUDGET

WATER UTILITY DEBT SCHEDULE

2014A Issue				2017B Issue			2016 Water Revenue		
Water				Water			Water		
Year	Principal	Interest	Total	Principal	Interest	Total	Principal	Interest	Total
2024	45,000.00	551.25	45,551.25	1,546.74	201.08	1,747.82	80,000.00	3,720.00	83,720.00
2025				1,691.11	154.68	1,845.79	80,000.00	2,280.00	82,280.00
2026				1,711.73	103.94	1,815.67	80,000.00	760.00	80,760.00
2027				1,752.96	52.58	1,805.54			
	45,000.00	551.25	45,551.25	6,702.54	512.28	7,214.82	240,000.00	6,760.00	246,760.00
2017 Safe Drinking Bonds				2019A Issue			2019 Refunding		
Water				Water			Water		
Year	Principal	Interest	Total	Principal	Interest	Total	Principal	Interest	Total
2024	57,970.29	15,528.62	73,498.91	35,000.00	6,850.00	41,850.00	55,000.00	4,950.00	59,950.00
2025	58,990.57	14,499.38	73,489.95	40,000.00	5,800.00	45,800.00	55,000.00	3,300.00	58,300.00
2026	60,028.80	13,451.99	73,480.79	40,000.00	4,600.00	44,600.00	55,000.00	1,650.00	56,650.00
2027	61,085.31	12,386.19	73,471.50	40,000.00	3,400.00	43,400.00			
2028	62,160.41	11,301.63	73,462.04	40,000.00	2,200.00	42,200.00			
2029	63,254.43	10,197.98	73,452.41	40,000.00	1,000.00	41,000.00			
2030	64,367.71	9,074.91	73,442.62						
2031	65,500.58	7,932.06	73,432.64						
2032	66,653.39	6,769.11	73,422.50						
2033	67,826.49	5,585.69	73,412.18						
2034	69,020.23	4,381.43	73,401.66						
2035	70,234.99	3,155.99	73,390.98						
2036	71,471.13	1,908.98	73,380.11						
2037	72,729.02	640.01	73,369.03						
	911,293.35	116,813.97	1,028,107.32	235,000.00	23,850.00	258,850.00	165,000.00	9,900.00	174,900.00
2020 Issue				2023 Issue			TOTAL DEBT		
Water				Water			Water		
Year	Principal	Interest	Total	Principal	Interest	Total	Principal	Interest	Total
2024	55,000.00	5,650.00	60,650.00	60,000.00	15,013.89	75,013.89	389,517.03	52,464.84	441,981.87
2025	55,000.00	4,550.00	59,550.00	40,000.00	20,500.00	60,500.00	330,681.68	51,084.06	381,765.74
2026	55,000.00	3,450.00	58,450.00	40,000.00	18,500.00	58,500.00	331,740.53	42,515.93	374,256.46
2027	55,000.00	2,350.00	57,350.00	40,000.00	16,500.00	56,500.00	197,838.27	34,688.77	232,527.04
2028	60,000.00	1,800.00	61,800.00	45,000.00	14,500.00	59,500.00	207,160.41	29,801.63	236,962.04
2029	60,000.00	1,200.00	61,200.00	45,000.00	12,250.00	57,250.00	208,254.43	24,647.98	232,902.41
2030	60,000.00	600.00	60,600.00	45,000.00	10,000.00	55,000.00	169,367.71	19,674.91	189,042.62
2031				50,000.00	7,750.00	57,750.00	115,500.58	15,682.06	131,182.64
2032				50,000.00	5,250.00	55,250.00	116,653.39	12,019.11	128,672.50
2033				55,000.00	2,750.00	57,750.00	122,826.49	8,335.69	131,162.18
2034							69,020.23	4,381.43	73,401.66
2035							70,234.99	3,155.99	73,390.98
2036							71,471.13	1,908.98	73,380.11
2037							72,729.02	640.01	73,369.03
	400,000.00	19,600.00	419,600.00	470,000.00	123,013.89	593,013.89	2,472,995.89	301,001.39	2,773,997.28

**VILLAGE OF LITTLE CHUTE
STORM UTILITY
BUDGET STATUS**

	2024		2023	% Change	\$ Change
	BUDGET	ACTUAL	ACTUAL	from PY	from PY
	Revenue = >	JULY YTD			
REVENUE					
Multi-family Residential	82,000	48,805	48,874	-0.1%	(69)
Residential	355,000	200,522	200,590	0.0%	(68)
Commercial	565,000	347,794	333,896	4.2%	13,898
Industrial	175,000	121,018	101,903	18.8%	19,115
Public Authority	125,000	80,949	73,617	10.0%	7,332
Sales Subtotal	1,302,000	799,088	758,880	5.3%	40,208
% of CY Budget		61%			
All Other	1,092,785	98,158	70,488	39.3%	27,670
TOTAL REVENUE	2,394,785	897,246	829,368	8.2%	67,878
% of CY Budget		37%			
	Expense = >	JULY YTD			
EXPENSES					
	BUDGET	ACTUAL	2023 ACTUAL		
Financing	599,186	324,302	326,164	-0.6%	(1,862)
Pond Maintenance	175,345	61,731	27,232	126.7%	34,499
Collection	169,262	116,881	102,966	13.5%	13,915
Billing	72,000	35,143	33,574	4.7%	1,569
Admin	271,790	153,466	162,190	-5.4%	(8,724)
TOTAL EXPENSE	1,287,583	691,523	652,126	6.0%	39,397
% of CY Budget		54%			
CASH FLOW - OPERATIONS	1,107,202	205,723	177,242		
ADD: DEPRECIATION	500,000	291,200	294,581		
ADD: NEW DEBT	-	-	-		
LESS: PRINCIPAL PAID	(395,275)	(314,907)	(145,000)		
LESS: FIXED ASSETS	(2,496,736)	(40,565)	(403,829)		
NET CASH FLOW	(1,284,809)	141,451	(77,006)		

NOTE :

Continue to see interest and investment income impacted as result of market changes. The unrealized loss that exists now will **not** be recognized as long as the assets are held until maturity. The Village invests in varying maturities to match cash flow needs. An unrealized loss exists when a longer term asset the Village owns price has declined in the market place due to varying interest rates. Each month end, Generally Accepted Accounting Principles require that we record an unrealized loss (or gain) to recognize market impacts. The market to face value total for the Village at the end of July is a \$114,345 unrealized loss. The positive news is that interest earnings have escalated from minimal returns in past.

Property, Auto and Workers Compensation premiums for the first three quarters have been paid so nine months of expense have hit income statement.

Pond Maintenance is up due to rental of pumps/repair of pump for the French Pond impact of the power surge.

Capital Contributions (revenue) are not recorded until year end (capital assets paid for by TID or contributed by developers) in the Storm Utility (\$1,030,000).

Capital assets are shown as expense in utilities for monitoring until capitalized as part of year end audit preparation.

VILLAGE OF LITTLE CHUTE 2024 BUDGET

STORM UTILITY DEBT SCHEDULE

2016 Storm Revenue				2010 Clean Water Fund			2019 Refunding		
Storm				Storm			Storm		
Year	Principal	Interest	Total	Principal	Interest	Total	Principal	Interest	Total
2023	80,000.00	30,192.00	110,192.00	25,275.30	4,776.24	30,051.54	95,000.00	9,000.00	104,000.00
2024	84,000.00	28,716.00	112,716.00	26,072.23	3,966.75	30,038.98	100,000.00	6,150.00	106,150.00
2025	84,000.00	27,120.00	111,120.00	26,894.29	3,131.75	30,026.04	105,000.00	3,150.00	108,150.00
2026	84,000.00	25,440.00	109,440.00	27,742.27	2,270.38	30,012.65			-
2027	92,000.00	23,542.00	115,542.00	28,616.98	1,381.89	29,998.87			-
2028	92,000.00	21,426.00	113,426.00	29,519.28	465.37	29,984.65			-
2029	96,000.00	19,168.00	115,168.00						
2030	100,000.00	16,718.00	116,718.00						
2031	100,000.00	14,118.00	114,118.00						
2032	104,000.00	11,364.00	115,364.00						
2033	108,000.00	8,340.00	116,340.00						
2034	112,000.00	5,040.00	117,040.00						
2035	112,000.00	1,680.00	113,680.00						
	1,248,000.00	232,864.00	1,480,864.00	164,120.35	15,992.38	180,112.73	300,000.00	18,300.00	318,300.00

2020 G O Note				2023 G O Note			TOTAL DEBT		
Storm				Storm			Storm		
Year	Principal	Interest	Total	Principal	Interest	Total	Principal	Interest	Total
2023	50,000.00	5,400.00	55,400.00	145,000.00	38,333.33	183,333.33	395,275.30	87,701.57	482,976.87
2024	55,000.00	4,400.00	59,400.00	105,000.00	52,750.00	157,750.00	370,072.23	95,982.75	466,054.98
2025	55,000.00	3,300.00	58,300.00	100,000.00	47,500.00	147,500.00	370,894.29	84,201.75	455,096.04
2026	55,000.00	2,200.00	57,200.00	105,000.00	42,500.00	147,500.00	271,742.27	72,410.38	344,152.65
2027	55,000.00	1,650.00	56,650.00	110,000.00	37,250.00	147,250.00	285,616.98	63,823.89	349,440.87
2028	55,000.00	1,100.00	56,100.00	115,000.00	31,750.00	146,750.00	291,519.28	54,741.37	346,260.65
2029	55,000.00	550.00	55,550.00	120,000.00	26,000.00	146,000.00	271,000.00	45,718.00	316,718.00
2030				125,000.00	20,000.00	145,000.00	225,000.00	36,718.00	261,718.00
2031				135,000.00	13,750.00	148,750.00	235,000.00	27,868.00	262,868.00
2032				140,000.00	7,000.00	147,000.00	244,000.00	18,364.00	262,364.00
2033							108,000.00	8,340.00	116,340.00
2034							112,000.00	5,040.00	117,040.00
2035							112,000.00	1,680.00	113,680.00
	380,000.00	18,600.00	398,600.00	1,200,000.00	316,833.33	1,516,833.33	3,292,120.35	602,589.71	3,894,710.06

UTILITY COMMISSION

August 20, 2024



Utility Bills List

The above payments are recommended for approval on August 20, 2024.

\$ 165,309.26

Rejected: _____

UTILITY INVOICES PAID WITH VILLAGE BILLS - JULY 6 - AUGUST 9, 2024

\$ 323,431.45

TOTAL

\$ 488,740.71

Approved: August 20, 2024

Kevin Coffey, Chairperson

Laurie Decker, Clerk

Report Criteria:

Invoice Detail.GL Account = "620000000000"-"620999999999","610000000000"-"610999999999","630000000000"-"630999999999"

Invoice Detail.Voided = {=} FALSE

Invoice	Description	Total Cost	Period	GL Account
A.P. PLUMBING LLC				
9467	NEW SUPPLY LINE	434.82	07/24	620-53644-253
Total A.P. PLUMBING LLC:		434.82		
APPLE VALLEY LANDSCAPING LLC				
2847	HERBICIDE TREATMENT - VANDENBROEK POND	600.00	08/24	630-53441-253
Total APPLE VALLEY LANDSCAPING LLC:		600.00		
BADGER METER INC				
80167516	ORION CELLULAR LTE SERV UNIT	1,028.70	07/24	620-53904-214
Total BADGER METER INC:		1,028.70		
CHARTER COMMUNICATIONS				
152864901080724	AUGUST/SEPTEMBER SERVICE	116.16	08/24	620-53924-203
Total CHARTER COMMUNICATIONS:		116.16		
DONALD HIETPAS & SONS INC.				
20924 EVERGREE	DUG UP VALVE - EVERGREEN DR	1,959.41	07/24	620-53644-251
72324STOPBOX	CHANGED STOP BOX AT 814 MICHIGAN AVE	1,599.16	08/24	620-53644-252
Total DONALD HIETPAS & SONS INC.:		3,558.57		
FASTENAL COMPANY				
WIKIM295438	SUPPLIES	29.07	07/24	620-53644-218
WIKIM295664	SUPPLIES	45.94	07/24	620-53644-251
WIKIM295709	SUPPLIES	164.00	07/24	620-53644-251
Total FASTENAL COMPANY:		239.01		
FERGUSON WATERWORKS LLC #1476				
423261	SUPPLIES	1,020.40	08/24	620-53644-251
423261	SUPPLIES	370.00	08/24	620-53644-252
423369	MISC PVC	2,659.26	08/24	630-53442-216
Total FERGUSON WATERWORKS LLC #1476:		4,049.66		
HAWKINS INC				
6817071	AZONE	990.70	07/24	620-53634-214
6817071	SODIUM SILICATE	4,231.25	07/24	620-53634-220
6830385	AZONE	942.73	08/24	620-53634-214
6830385	SODIUM SILICATE	4,231.25	08/24	620-53634-220
Total HAWKINS INC:		10,395.93		
LAZER UTILITY LOCATING LLC				
1765	SANITARY LOCATES	242.00	08/24	610-53612-209
1765	STORM LOCATES	561.00	08/24	630-53442-209
1765	WATER LOCATES	770.00	08/24	620-53644-209

Invoice	Description	Total Cost	Period	GL Account
Total LAZER UTILITY LOCATING LLC:		1,573.00		
LITTLE CHUTE ACE HARDWARE				
285448	AUTO GEAR OIL 80W90 1 QT	7.99	07/24	620-53634-255
285524	ELBOW 45 2" SXS SCH40	4.59	07/24	620-53634-255
285568	TOILET TNK REPR	16.99	08/24	620-53634-255
285626	COMM SWITCH & FOAM WASP & HORNET	30.36	07/24	620-53644-218
285687	HDW CLOTH - STORM SEWER	16.99	08/24	630-53442-251
285730	INSECT REPELANT	7.49	08/24	620-53644-218
Total LITTLE CHUTE ACE HARDWARE:		84.41		
MCO				
30933	HEALTH & LIABILITY INS SEPT 2024	39,922.96	08/24	620-53644-115
Total MCO:		39,922.96		
MENARDS - APPLETON EAST				
60666	SANITARY SEWER PARTS - PATRIOT & FREEDOM	80.96	07/24	610-53612-251
60928	CUTTING PLIERS & 48" T12 40W 6500K	55.89	07/24	620-53644-221
Total MENARDS - APPLETON EAST:		136.85		
MIDWEST METER INC				
169727	METER BASE, CELLULAR LTE REMOTE, ETC	66,800.00	08/24	620-53644-301
Total MIDWEST METER INC:		66,800.00		
MIDWEST SALT LLC				
P475138	INDUSTRIAL COARSE SALT	3,527.77	07/24	620-53634-224
P475206	INDUSTRIAL COARSE SALT	3,708.93	07/24	620-53634-224
P475228	INDUSTRIAL COARSE SALT	3,534.24	07/24	620-53634-224
P475241	INDUSTRIAL COARSE SALT	3,607.03	07/24	620-53634-224
P475315	INDUSTRIAL COARSE SALT	3,639.38	07/24	620-53634-224
P475370	INDUSTRIAL COARSE SALT	3,786.57	07/24	620-53634-224
P475456	INDUSTRIAL COARSE SALT	3,427.48	07/24	620-53634-224
P475506	INDUSTRIAL COARSE SALT	3,571.44	08/24	620-53634-224
P475536	INDUSTRIAL COARSE SALT	3,556.88	08/24	620-53634-224
Total MIDWEST SALT LLC:		32,359.72		
NORTHERN LAKE SERVICE INC				
2411851	DW LEAD & COPPER ANALYSIS	775.00	07/24	620-53644-204
2412384	DW SAMPLES	519.36	07/24	620-53644-204
2412644	DW LEAD & COPPER ANALYSIS	775.00	07/24	620-53644-204
2412665	DW LEAD & COPPER ANALYSIS	400.00	07/24	620-53644-204
Total NORTHERN LAKE SERVICE INC:		2,469.36		
P.J. KORTENS AND COMPANY INC				
10024956	FIBER COMMUNICATION CHANGEOVER	725.20	07/24	620-53624-302
10024956	FIBER COMMUNICATION CHANGEOVER	725.20	07/24	620-53634-302
Total P.J. KORTENS AND COMPANY INC:		1,450.40		

Invoice	Description	Total Cost	Period	GL Account
POSTAL EXPRESS & MORE LLC				
257833	POSTAGE-WATER TESTS	19.46	08/24	620-53644-204
Total POSTAL EXPRESS & MORE LLC:		19.46		
REINDERS INC				
2727131	LAWN SEED	70.25	08/24	630-53442-216
Total REINDERS INC:		70.25		
Grand Totals:		165,309.26		

Report GL Period Summary

Vendor number hash: 117329
Vendor number hash - split: 136946
Total number of invoices: 40
Total number of transactions: 46

Terms Description	Invoice Amount	Net Invoice Amount
Open Terms	165,309.26	165,309.26
Grand Totals:	165,309.26	165,309.26

Report Criteria:

Invoice Detail.GL Account = "620000000000"-"620999999999","610000000000"-"610999999999","630000000000"-"630999999999"
Invoice Detail.Voided = {=} FALSE

Report Criteria:
Invoice Detail.GL Account = "6200000000"- "62099999999","61000000000"- "61099999999","63000000000"- "63099999999"

Invoice	Type	Description	Total Cost	Terms	1099	PO Number	GL Account
AL HARDWARE COMPANY (4702)							
285061	Invoi	ANT BAIT	8.99	Open	Non		620-53634-255
285069	Invoi	GREASE & ANT KILLER SPRAY	15.98	Open	Non		620-53634-255
285084	Invoi	TOILET REPAIR KIT	27.99	Open	Non		620-53634-255
285150	Invoi	FASTENERS	8.21	Open	Non		620-53624-255
285185	Invoi	WIRE CONNECTR & BALL VALUE	25.98	Open	Non		620-53634-255
285202	Invoi	SUPPLIES	47.43	Open	Non		620-53644-253
285438	Invoi	STORM POND KEYS	37.68	Open	Non		630-53441-218
Total AL HARDWARE COMPANY (4702):			172.26				
APPLE VALLEY LANDSCAPING LLC (5523)							
2820	Invoi	HERBICIDE TREATMENT - VANDENBROEK POND	900.00	Open	Non		630-53441-204
2823	Invoi	HERBICIDE TREATMENT - VANDENBROEK PONG	600.00	Open	Non		630-53441-204
Total APPLE VALLEY LANDSCAPING LLC (5523):			1,500.00				
AT& T (409)							
92078873810724	Invoi	JUN/JUL SERVICE	70.31	Open	Non		620-53924-203
Total AT& T (409):			70.31				
AT&T LONG DISTANCE (2751)							
8456268570624	Invoi	MAY/JUN CHARGES	.66	Open	Non		620-53924-203
Total AT&T LONG DISTANCE (2751):			.66				
BADGER METER INC (517)							
80164459	Invoi	ORION CELLULAR LTE SERV UNIT	1,033.20	Open	Non		620-53904-214
Total BADGER METER INC (517):			1,033.20				
BATTERIES PLUS LLC (652)							
P73682004	Invoi	BATTERIES	118.80	Open	Non		610-53612-251
P74522399	Invoi	SANITARY SEWER METER BATTERIES	118.80	Open	Non		610-53612-251
Total BATTERIES PLUS LLC (652):			237.60				
CELLCOM (4683)							
540584	Invoi	STORM I-PADS	23.59	Open	Non		630-53442-218
540584	Invoi	SANITARY SEWER I-PAD	23.59	Open	Non		610-53612-218
Total CELLCOM (4683):			47.18				
CIVIC SYSTEMS LLC (705)							
CVC25093	Invoi	SEMI ANNUAL SUPPORT FEES 7/1/24-12/31/24	2,298.00	Open	Non		610-53614-208
CVC25093	Invoi	SEMI ANNUAL SUPPORT FEES 7/1/24-12/31/24	2,174.00	Open	Non		620-53924-208
CVC25093	Invoi	SEMI ANNUAL SUPPORT FEES 7/1/24-12/31/24	4,007.00	Open	Non		630-53444-208
Total CIVIC SYSTEMS LLC (705):			8,479.00				
DIGGERS HOTLINE INC (1380)							
240759201PP1	Invoi	2ND PREPAYMENT 2024	191.46	Open	Non		610-53612-209
240759201PP1	Invoi	2ND PREPAYMENT 2024	191.47	Open	Non		620-53644-209

Invoice	Type	Description	Total Cost	Terms	1099	PO Number	GL Account
240759201PP1	Invoi	2ND PREPAYMENT 2024	191.47	Open	Non		630-53442-209
Total DIGGERS HOTLINE INC (1380):			574.40				
DONALD HIETPAS & SONS INC. (209)							
61924CEDARST	Invoi	1003 CEDAR ST - REPLACE WATER SVC FROM M	2,927.50	Open	Non		620-53644-252
Total DONALD HIETPAS & SONS INC. (209):			2,927.50				
FERGUSON WATERWORKS LLC #1476 (221)							
417081-1	Invoi	ADJ GATGE VLV WRCH 6-11	430.76	Open	Non		620-53644-221
419157	Invoi	BLUE PIPE	109.80	Open	Non		620-53644-252
421239	Invoi	1/2 FLANK PENTAGON DV SOC	65.08	Open	Non		620-53644-252
Total FERGUSON WATERWORKS LLC #1476 (221):			605.64				
GARROW OIL (4236)							
415303 & 417517	Invoi	DIESEL TANK	1.55	Open	Non		610-53612-247
415303 & 417517	Invoi	DIESEL TANK	.37	Open	Non		620-53644-247
Total GARROW OIL (4236):			1.92				
GRAINGER (2338)							
9148456800	Invoi	SUPPLIES	264.62	Open	Non		620-53644-252
Total GRAINGER (2338):			264.62				
GRIESBACH READY-MIX LLC (3832)							
8160	Invoi	CONCRETE-WISCONSIN AVE	380.00	Open	Non		620-53644-251
Total GRIESBACH READY-MIX LLC (3832):			380.00				
HAWKINS INC (1918)							
6791427	Invoi	AZONE	899.57	Open	Non		620-53634-214
6791427	Invoi	SODIUM SILICATE	4,231.25	Open	Non		620-53634-220
6802078	Invoi	AZONE	963.60	Open	Non		620-53634-214
6802078	Invoi	SODIUM SILICATE	3,879.67	Open	Non		620-53634-220
Total HAWKINS INC (1918):			9,974.09				
HEART OF THE VALLEY (280)							
70824	Invoi	WASTEWATER	179,861.98	Open	Non		610-53611-225
70824	Invoi	FOG CONTROL	146.00	Open	Non		610-53611-204
Total HEART OF THE VALLEY (280):			180,007.98				
HEARTLAND BUSINESS SYSTEMS (3449)							
707940H	Invoi	UTILITY POSTCARDS - MAY QTY 3,491	122.18	Open	Non		610-53614-206
707940H	Invoi	UTILITY POSTCARDS - MAY QTY 3,491	122.19	Open	Non		620-53904-206
707940H	Invoi	UTILITY POSTCARDS - MAY QTY 3,491	122.18	Open	Non		630-53443-206
707955H	Invoi	UTILITY POSTCARDS - JUNE QTY 3,481	121.84	Open	Non		610-53614-206
707955H	Invoi	UTILITY POSTCARDS - JUNE QTY 3,481	121.83	Open	Non		620-53904-206
707955H	Invoi	UTILITY POSTCARDS - JUNE QTY 3,481	121.84	Open	Non		630-53443-206
Total HEARTLAND BUSINESS SYSTEMS (3449):			732.06				

Invoice	Type	Description	Total Cost	Terms	1099	PO Number	GL Account
KAUKAUNA UTILITIES (234)							
JULY 2024	Invoi	PUMP STATION JEFFERSON ST	1,484.14	Open	Non		620-53624-249
JULY 2024	Invoi	#4 WELL EVERGREEN DRIVE	6,997.05	Open	Non		620-53624-249
JULY 2024	Invoi	#3 WELL WASHINGTON ST	3,216.56	Open	Non		620-53624-249
JULY 2024	Invoi	STEPHEN ST TOWER/LIGHTING	108.50	Open	Non		620-53624-249
JULY 2024	Invoi	DOYLE PARK WELL ACCT 9012695-00	4,174.62	Open	Non		620-53624-249
JULY 2024	Invoi	1800 STEPHEN ST STORM ACCT 282179-01	1,721.63	Open	Non		630-53441-249
Total KAUKAUNA UTILITIES (234):			17,702.50				
LAZER UTILITY LOCATING LLC (5357)							
1736	Invoi	SANITARY LOCATES	572.00	Open	Non		610-53612-209
1736	Invoi	STORM LOCATES	891.00	Open	Non		630-53442-209
1736	Invoi	WATER LOCATES	1,496.00	Open	Non		620-53644-209
Total LAZER UTILITY LOCATING LLC (5357):			2,959.00				
MCC INC (480)							
349244	Invoi	WATER MAINTENANCE OF MAIN	1,439.35	Open	Non		620-53644-251
Total MCC INC (480):			1,439.35				
MCMAHON ASSOCIATES INC (276)							
935432	Invoi	STORM POND MAINTENANCE	547.50	Open	Non		630-53441-204
935504	Invoi	PROFESSIONAL SERVICES 4/28-6/01/24 STORM S	3,654.00	Open	Non		630-51216-204
935504	Adju	PROFESSIONAL SERVICES 4/28-6/01/24 STORM S	3,654.00-	Open	Non		630-51216-204
935504	Invoi	PROFESSIONAL SERVICES 4/28-6/01/24 STORM S	3,654.00	Open	Non		630-51216-204
Total MCMAHON ASSOCIATES INC (276):			4,201.50				
MCO (2254)							
30822	Invoi	BILLABLE MILEAGE - MAY 2024	777.90	Open	Non		620-53644-247
30853	Invoi	HEALTH & LIABILITY INS AUG 2024	39,922.96	Open	Non		620-53644-115
30906	Invoi	BILLABLE MILEAGE - JUNE 2024	451.61	Open	Non		620-53644-247
Total MCO (2254):			41,152.47				
MIDWEST METER INC (4407)							
168178	Invoi	CHAMBER ASSEMBLY & CAGE SEAL	1,166.60	Open	Non		620-53644-301
168242	Invoi	EXT CABLE TWIST TIGHT	184.60	Open	Non		620-53644-253
168535	Invoi	RESISTER	29.62	Open	Non		620-53644-253
168694	Invoi	METER BASE, CELLULAR LTE REMOTE, ETC	2,455.00	Open	Non		620-53644-301
Total MIDWEST METER INC (4407):			3,835.82				
MIDWEST SALT LLC (5001)							
P474798	Invoi	INDUSTRIAL COARSE SALT	3,595.70	Open	Non		620-53634-224
P474821	Invoi	INDUSTRIAL COARSE SALT	3,445.28	Open	Non		620-53634-224
P474946	Invoi	INDUSTRIAL COARSE SALT	3,540.71	Open	Non		620-53634-224
P475027	Invoi	INDUSTRIAL COARSE SALT	3,463.07	Open	Non		620-53634-224
P475061	Invoi	INDUSTRIAL COARSE SALT	3,600.56	Open	Non		620-53634-224
P475088	Invoi	INDUSTRIAL COARSE SALT	3,581.15	Open	Non		620-53634-224
Total MIDWEST SALT LLC (5001):			21,226.47				
OUTAGAMIE COUNTY TREASURER (486)							
1020958	Invoi	FUEL BILL - JUNE	11.86	Open	Non		630-53441-247

Invoice	Type	Description	Total Cost	Terms	1099	PO Number	GL Account
1020958	Invoi	FUEL BILL - JUNE	370.25	Open	Non		630-53442-247
1020958	Invoi	FUEL BILL - JUNE	246.84	Open	Non		610-53612-247
1020958	Invoi	FUEL BILL - JUNE	337.61	Open	Non		620-53644-247
Total OUTAGAMIE COUNTY TREASURER (486):			966.56				
PLESHEK OUTDOOR POWER (727)							
84270	Invoi	STORM PONDS TRIMMER PARTS	612.96	Open	Non		630-53441-253
Total PLESHEK OUTDOOR POWER (727):			612.96				
POSTAL EXPRESS & MORE LLC (5093)							
256619	Invoi	POSTAGE-WATER TESTS	19.46	Open	Non		620-53644-204
256662	Invoi	POSTAGE-WATER TESTS	20.46	Open	Non		620-53644-204
256751	Invoi	POSTAGE-WATER TESTS	20.46	Open	Non		620-53644-204
Total POSTAL EXPRESS & MORE LLC (5093):			60.38				
PRIMADATA LLC (4671)							
AUGUST 2024	Invoi	POSTCARD POSTAGE	325.00	Open	Non		610-53613-226
AUGUST 2024	Invoi	POSTCARD POSTAGE	325.00	Open	Non		620-53904-226
AUGUST 2024	Invoi	POSTCARD POSTAGE	325.00	Open	Non		630-53443-226
Total PRIMADATA LLC (4671):			975.00				
SHERWIN INDUSTRIES INC (1028)							
SS102686	Invoi	EAR PLUGS	8.10	Open	Non		610-53612-213
SS102686	Invoi	EAR PLUGS	8.10	Open	Non		620-53644-218
SS102686	Invoi	EAR PLUGS	8.10	Open	Non		630-53441-218
SS102686	Invoi	EAR PLUGS	8.10	Open	Non		630-53442-213
Total SHERWIN INDUSTRIES INC (1028):			32.40				
SPEEDY CLEAN DRAIN & SEWER (122)							
83231	Invoi	CLEAN & TELEWISE	1,842.50	Open	Non		630-53442-204
83231	Invoi	CLEAN & TELEWISE	13,000.00	Open	Non		610-53612-256
83231	Invoi	CLEAN & TELEWISE	4,607.13	Open	Non		610-53612-204
Total SPEEDY CLEAN DRAIN & SEWER (122):			19,449.63				
SWINKLES TRUCKING & EXCAVATING CORP (1853)							
61456	Invoi	PULVERIZED TOPSOIL	91.25	Open	Non		620-53644-251
Total SWINKLES TRUCKING & EXCAVATING CORP (1853):			91.25				
TIME WARNER CABLE (89)							
152864901070724	Invoi	JULY/AUGUST SERVICE	116.16	Open	Non		620-53924-203
Total TIME WARNER CABLE (89):			116.16				
U.S. BANK (5015)							
49100724	Invoi	AMAZON - GEL PENS	40.03	Open	Non		620-53924-206
49100724	Invoi	AMAZON - 3 PHASE VOLTAGE MONITOR	222.28	Open	Non		620-53634-255
Total U.S. BANK (5015):			262.31				

Invoice	Type	Description	Total Cost	Terms	1099	PO Number	GL Account
UNITED RAYNOR (425)							
25653	Invoi	LIFTMASTER TRANSMITTER	40.00	Open	Non		620-53624-255
25653	Invoi	LIFTMASTER TRANSMITTER	40.00	Open	Non		620-53634-255
Total UNITED RAYNOR (425):			80.00				
VERIZON WIRELESS (3606)							
9969016080	Invoi	JUNE/JULY SERVICE	74.17	Open	Non		620-53924-203
Total VERIZON WIRELESS (3606):			74.17				
VILLAGE OF LITTLE CHUTE (1404)							
JULY 2024	Invoi	PUMP STATION JEFFERSON ST	36.82	Open	Non		620-53624-249
JULY 2024	Invoi	DOYLE PARK WELL #1	16.56	Open	Non		620-53624-249
JULY 2024	Invoi	#3 WELL WASHINGTON ST	12.38	Open	Non		620-53624-249
JULY 2024	Invoi	625 E EVERGREEN DR	152.32	Open	Non		620-53624-249
JULY 2024	Invoi	1200 STEPHEN ST - WATER TOWER	13.20	Open	Non		620-53624-249
JULY 2024	Invoi	3609 FREEDOM RD-WATER/SEWER	18.15	Open	Non		630-53441-249
Total VILLAGE OF LITTLE CHUTE (1404):			249.43				
WE ENERGIES (2788)							
5088550720	Invoi	PLANT #1 (100 WILSON ST)	10.56	Open	Non		620-53624-249
5088550720	Invoi	PUMP STATION @ EVERGREEN & FRENCH	512.39	Open	Non		620-53624-249
5088550720	Invoi	920 WASHINGTON ST	10.56	Open	Non		620-53624-249
5088550720	Invoi	LC WELL #4 PUMPHOUSE 625 E EVERGREEN	11.60	Open	Non		620-53624-249
5088550720	Invoi	PLANT #2 1118 JEFFERSON ST	10.56	Open	Non		620-53624-249
Total WE ENERGIES (2788):			555.67				
WISCONSIN CENTRAL (2798)							
9500263509	Invoi	ANNUAL RENT-SANITARY SEWER	180.00	Open	Non		610-53612-211
9500263538	Invoi	ANNUAL RENT-STORM SEWER	200.00	Open	Non		610-53612-211
Total WISCONSIN CENTRAL (2798):			380.00				
Grand Totals:			323,431.45				

Report GL Period Summary

Vendor number hash: 182109
Vendor number hash - split: 263286
Total number of invoices: 64
Total number of transactions: 107

Terms Description	Invoice Amount	Net Invoice Amount
Open Terms	323,431.45	323,431.45
Grand Totals:	323,431.45	323,431.45

Terms Description	Invoice Amount	Net Invoice Amount
-------------------	----------------	--------------------

Report Criteria:
Invoice Detail.GL Account = "6200000000"- "62099999999", "61000000000"- "61099999999", "63000000000"- "63099999999"