



GREETINGS FROM OUR VILLAGE PRESIDENT, MICHAEL VANDEN BERG

Another year is about to go into the books. As always it was a very busy year with many projects. Your sleepy little village has a lot going on! As the WisDOT I-41 project continues to make significant progress, you can expect disruption to your normal travel patterns over the next several years. All of Little Chute's ramps have been completed as of the end of this year, and we will continue to see improvements to the lane system next. Your patience and understanding are appreciated.

We are almost ready to begin construction of our new fire station! The design phase is complete, and we patiently wait for bids to come in by December 9th. We want to recognize the hard work and commitment our volunteer firefighters continue to do for our community. The location of the new facility will be on the corner of Hans Parkway and Depot Street, and it has a new address of 1105 Depot Street. The process for planning for the new facility has been going on for several years. The design phase was critical because this is a once in lifetime project—getting it right is important so the facility will serve the community for many future generations. Our new station will be something this community can be proud of and fit the theme of our existing facilities.

It is also important to recognize the news of Kimberly separating from the Fox Valley Metropolitan Police Department. Included in the 2026 annual budget is an approval from both Boards to continue funding operations through 2026 as we navigate the future of policing in our community.

Our Board is committed to ensuring public safety a top priority for our residents and businesses.

The Village Board is extremely grateful of our Police Department's professionalism and commitment to our community through this difficult time of transition.

The Board passed our budget for 2026 on November 5th. In comparison to 2025, the Village Equalized Tax Rate went from \$5.02 to \$4.56 and Assessed Tax Rate from \$6.76 to \$4.66. The Village of Little Chute taxes on an average home (\$200k equalized or FMV) went from \$1,004 to \$912. On behalf of the board, I would like to thank the Finance Department and everyone at the Village who contributed to the annual budget process. Our municipal budget is a huge task that involves most everyone. Finance has processes in place that make things go relatively smoothly. Of course, we will soon embark on the 2027 budget.

Finally, I want to thank our Village staff for another great year of operations. The fact that Little Chute has a workforce dedicated to our community and with much knowledge and skills, is a blessing the board appreciates daily. Little Chute has much to be thankful for and proud of. Thank you! I sincerely wish everyone a Merry Christmas and Happy New Year. I hope you have an opportunity to connect or reconnect with family and friends.

~ President Vanden Berg

FEATURING

PG. 2 From Our Leaders

PG. 3 Library

PG. 4 Finance

PG. 6 Parks, Rec & Forestry

PG. 7 Board Schedule

PG. 8 Champion Center

PG. 9 Fire Department

PG. 10 2025 Refuse Calendar

FROM OUR LEADERS

2025 MESSAGE FROM BEAU BERNHOFT, VILLAGE ADMINISTRATOR LOOKING AHEAD TO 2026

Our team is gearing up for 2026 and ready for the roadmap ahead! We're excited to complete many ongoing projects and continue making meaningful improvements throughout our community. From the updated water rate study and continued development growth to infrastructure upgrades and the construction of a new fire station, we have many important initiatives underway as a municipality.

This year brought several changes to our municipal leadership team, and we are pleased to welcome new talent to Little Chute. The Village has hired Robert Givens as our new Public Works Director, Todd Verboomen as Operations Manager in Public Works, Nicole Ryerson as our new Village Clerk, Karen Schuh as Program Supervisor, Phil Garncarz as Utility Clerk, and Cheryl Peotter as Payroll Clerk. We are grateful to bring in such experienced professionals and look forward to the great work we'll accomplish together in service to our residents.

As part of our ongoing commitment to enhancing the quality of life in Little Chute, we are looking forward to a full year of fun at the new Splash Pad at Van Lieshout Park. Families were able to enjoy it at the end of this past summer, and feedback was overwhelmingly positive.

We are also continuing the expansion of our trail system, extending west from Creekview Park toward the Apple Creek Trail Network. The final phase of construction will begin in 2026 and is expected to open by summer. This expanded connectivity will allow Little Chute users seamless access to Appleton's existing trail system and serve as a key link within the broader county network.

The Village has been working diligently on the design and construction of a new facility for our 47 volunteer firefighters. In 2024, we acquired land at the southwest corner of Hans Parkway and Depot Street for an approximately 18,000-square-foot fire station. Our Fire Department is collaborating with Short Elliot Hendrickson (SEH) and Miron Construction on design and bidding throughout 2025. As we are near the end of 2025, bids will be received, with construction planned for 2026. We are eager to break ground and look forward to providing our dedicated volunteers with a modern, functional new home.

The Village is also researching and developing pedestrian improvements to enhance safety in busy areas of our community. The 2026 budget includes funding for crossing enhancements, with locations to be determined. Our initial focus will be on pedestrian crossings near schools and in high-traffic areas. Through our recently completed Safe Routes to School Assessment, we have identified several locations that would benefit from upgrades. We will continue to plan, prioritize, and share updates as these improvements move forward.



VILLAGE OF LITTLE CHUTE - LIBRARY

The Little Chute Public Library strives to provide a welcoming space and diverse materials that enhances and supports the community, recreation, literacy, and lifelong learning.

HOURS

Monday – Thursday 9AM – 7PM
Friday 9AM – 5PM
Saturday 9AM – 1PM
Sunday – Closed

ADDRESS

625 Grand Ave,
Little Chute, WI 54140

WEBSITE

littlechutelibrary.org

PHONE

920-788-7825



UPCOMING EVENTS IN 2026

Penguin-Palooza Storytime

Saturday, January 17 at 10:30AM

Waddle over for a special storytime all about penguins. Best for ages 3-6 and siblings are always welcome!



Adult Events

Thursday, January 29 at 5:30PM

The Past, Present, and Future of the Great Lakes



Learn about the Great Lakes from UW-Madison's fisheries specialist Titus Seilheimer. Titus has spent more than 100 days on Lake Michigan commercial fishing boats, and his research has taken him to all 5 Great Lakes.



Beeswax Luminaries

Saturday, February 28 at 10:30AM *Registration required*

Craft a bowl made from pure beeswax and flowers with nature enthusiast the Woodsy Dude! Registration starts February 2nd. Fifteen (15) spots available.

3 | WINTER 2025 NEWSLETTER

**Van Zeeland's**
AUTO CARE CENTERS
Tire Headquarters

Little Chute	788-6788
W. Appleton	738-5660
Menasha	738-7333
N Appleton	738-3533
Neenah	722-1149

vanzeelands.com

Action Auto Service

Scheduled Maintenance • Heating/Cooling
Alignment • Exhaust • Inspections
Electrical • Tires & More
Mon-Thu 8-6, Fri 8-5, Sat & Sun - Closed

920-759-2131
337 Taylor St., Hwy 96, Kaukauna, WI
www.actionautoservicekaukauna.com

**BOB TRISH'S**
POD IN AGAIN

1420 E. Main Street
Little Chute, WI 54130
920-788-9310

**KEITH PETERSEN**
PLUMBING INC.

www.petersenplumbinginc.com
PERSONAL • PROFESSIONAL • DEPENDABLE
Little Chute, WI **(920) 687-9272**

Personalized Care 

When you need extra support at home, personalized care matters. First in home care, Interim HealthCare® understands the importance of caring for the whole individual. Our HomeLife Enrichment® standard of care engages the mind, body, spirit and family to ensure you receive the personalized care you deserve.

- Med Reminders • Meals • Companionship
- Bathing • Dressing • Transportation



What matters to you, matters to us.

Call us today to learn more!
(929) 944-8945
interim.com/fox-cities

©2024 Interim HealthCare Inc. Most offices are independently owned and operated.



FINANCE

TAX COLLECTION

2025 Tax bills were mailed on December 2.

Contactless payments are encouraged!

E-check is available on the Outagamie County Website for no fee. Go to www.outagamie.org and click on "Property Taxes." You will need your bank account and routing number. Alternatively, for a flat fee of \$3.50 you can use your debit card. If you want to pay by credit card, there will be a fee equal to 2.2% of the amount you are paying. For all online options, you may print a payment receipt for your records.

Mail payments in full or 1st installments by January 31, 2026, to: Village of Little Chute, 108 W. Main St., Little Chute, WI 54140. If you would like a receipt, please include a stamped, self-addressed envelope with your payment. Except for our Holiday hours (closed December 24 - 25, and January 1), you may pay your taxes Monday - Friday from 8:00 AM to 4:30 PM at Village Hall. Capital Credit Union's North Avenue location and Bank of Little Chute are also collecting taxes as a service to the community. Cash/checks are only collected at these locations.

Credit or Debit Card payments are ONLY ACCEPTED ONLINE at www.outagamie.org

The last day to pay taxes in person at Village Hall with a 2025 dated receipt is: Wednesday, December 31st from 8:00 AM to 4:30 PM. Capital Credit Union is open December 31st 8:00 AM

to 5:30 PM and Bank of Little Chute is open December 31st from 9:00 AM - 5:00 PM.

If paying in person or by mail, be sure to include the 1st installment stub (upper left corner) with your payment. Mailed payments must be postmarked by January 31, 2026, to be considered timely. A night deposit box is available under the canopy entrance along the Grand Avenue side of Village Hall.

If receiving an escrow check from your mortgage company, the entire payment amount must be applied to your tax bill. If the escrow check exceeds the entire tax amount, you will be issued a refund. Cash refunds are limited to \$50.00 at Village Hall and if it exceeds \$50, a refund check will be issued. Refund checks are cut weekly.

Second installments are due by July 31, 2026, payable to: Outagamie County Treasurer, 320 S. Walnut St., Appleton, WI 54911.

The Village of Little Chute cannot accept any tax payments after the January 31 settlement with Outagamie County.

Please notify us if there is an incorrect mailing address on your tax bill. We will forward your information to the County Treasurer for you. However, for an ownership or legal name change that is not reflected on the tax bill, taxpayer must record those changes directly with the County Register of Deeds.

AUTO PAY & PAPERLESS OPTIONS

Too much paper in your life? Go paperless! Save time and take fewer trips to the mailbox with paperless billing.

- ◆ Email notifications when you have a new invoice available ensures you're aware of upcoming due dates
- ◆ Enjoy a faster, more convenient payment process
- ◆ Online access to your invoices anytime, 24/7
- ◆ Make a payment anytime on the device of your choice



**Make a statement -
Sign up for Paperless Billing
and Auto Pay at:**
littlechutewi.org/528

2024 PAFR

We are pleased to present the Village of Little Chute's Popular Annual Financial Reports (PAFR). The PAFR summarizes the Village's financial information in a user-friendly and simplified format. Our goal in producing this report is to present the Village's finances in a manner that appeals to a wider audience, enhancing the

interest and understanding of the Village's overall financial condition.



Scan me with your smart phone to view report



LOTTERY CREDIT FOR PROPERTY TAXES

Residential property owners are eligible for a lottery credit if they meet the following criteria:

- **Property must be your primary residence**
- **Residency established as of January 1 of the current year**

If you continue to reside in the same owner-occupied residence, and have received the lottery credit previously on your property tax bill, you do not need to take any action.

Those who purchased or built a new home in 2024 and occupied it by January 1, 2025 are responsible to use the Lottery and Gaming Credit Online Application Portal located on the Wisconsin Department of Revenue Website: <https://www.revenue.wi.gov/Pages/Form/lottery-home.aspx> to apply for or remove a lottery gaming credit. File and submit your application online without the added step of printing, mailing, or emailing.

FIRST DOLLAR CREDIT FOR PROPERTY TAXES

First dollar credit applies to all property (residential, commercial, manufacturing) that has an improvement value printed on the tax bill. The legislation excludes mobile homes and leased property from the distribution. The first dollar credit is evenly applied to both installment payments unlike the lottery credit that is applied only to the first installment.

DOG LICENSING

Dog licenses can be purchased at the Village Hall Finance Department. Per Ordinance, all dogs five months or older must be licensed. Please bring the following copies with you: Rabies vaccination records and proof of spayed/neutering.

The fees are \$7.00 (\$12.00 after March 31st) for spayed/neutered and \$12.00 (\$17.00 after March 31st) for in tact.

NEVER MISS OUR NEWSLETTER!

SUBSCRIBE

Have our newsletter
emailed to you.



VISIT WWW.MYCOMMUNITYONLINE.COM

PARKS, RECREATION & FORESTRY

2026 FACILITY RENTALS

If you are looking for a facility to hold a family reunion, birthday party, company picnic, graduation party, church picnic, or club gathering, we can help you find the perfect place for your event. We have indoor facilities at the Civic Center and at Van Lieshout Rec Center, as well as outdoor open-air shelter facilities at Doyle Park, Heesakker Park, Legion Park, and Van Lieshout Park.

Reservations are taken on a first-come, first-serve IN PERSON basis only at the Park & Rec Dept starting on the first business day of the calendar year (1/2/25). Rentals of our Indoor Civic Center and Indoor Van Lieshout Rec Center rooms are taken for March of the current year through February of the following year. Rentals of our Outdoor Open Air Park Shelters are taken for the months of May, June, July, August, and September of the current year only. Reservations can be made at the Little Chute Park & Rec Dept (2nd floor of Village Hall, 108 W. Main Street) weekdays from 8:00 a.m. to 4:30 p.m. Payment of rental fee plus security deposit is due in full at time of reservation and must be paid **USING CASH OR CHECK ONLY** (we cannot take debit/credit card).

For full details and pricing visit:

<https://www.littlechutewi.org/198>

ALL Rentals are handled by Park & Rec Dept
Questions, please call **(920) 423-3869**

PARKS & REC HELP WANTED:

Will your child be looking for a summer job?

Starting on Friday, January 2, we will have our part-time summer job applications available for students interested in applying for a job as a Recreation Instructor, Pool Manager, Pool Lifeguard, Pool Cashier, or Parks/Forestry/Street Laborer. Starting in January, stop in to the Park & Rec (2nd floor of Village Hall) to pick up an application form or check our website for the application link.

Please note that our deadline for returning completed applications will be Monday, March 30. Pool applications will be accepted until May 1st.



Van Lieshout Rec Center



Doyle Park Cheese Fest Shelter



Civic Center



DO NOT NEED TO CALL IN FOR PICKUP OF CHRISTMAS TREES!

Please place your tree curbside once all lights, ornaments, garland, and tinsel has been removed. Trees should not be wrapped with tree bags. Mobile home residents should also put out their tree to the street within their mobile home park. Starting in January the village forestry crew will be scheduled as deemed necessary for Christmas tree pickup with the chipper. Please be patient, since they will be chipping a lot of trees within the village. Wreaths or boughs containing metal wiring must be disposed of in your polycart because the chipper cannot chip items with metal.

BOARD/COMMITTEE SCHEDULE 2026

	REGULAR BOARD	PLAN COMM.	UTILITY COMM.	LIBRARY BOARD	JOINT POLICE	FIRE COMM.	PARK PLANNING
JANUARY	7,21	12	20	20			13
FEBRUARY	4,18	9	17	17	17	9	
MARCH	4, 18	9	17	17			3
APRIL	1, 15	13	21	21			
MAY	6, 20	11	19	19	19	11	5
JUNE	3, 17	8	16	16			
JULY	1, 15	13	21	21			
AUGUST	5, 19	10	18	18	18		11*
SEPTEMBER	2, 16	14	15	15		14	8
OCTOBER	7, 21	12	20	20			
NOVEMBER	4, 18	9	17	17	17	9	3
DECEMBER	2, 16	14	15	15			

- Regular Board - 1st & 3rd Wed., 6:00 PM
- Plan Commission - 2nd Mon., 5:00 PM
- Utility Commission - 3rd Tues., 5:00 PM
- Library Board - 3rd Tue., 4:30 PM

- Joint Police Commission - 3rd Tues./Quarterly, 5:00 PM
- Fire Commission - 2nd Mon./Quarterly, 5:45 PM
- Park Plan Commission - 1st Tues./Bi-Monthly, 5:30 PM
- *Moved to accommodate budget timeline

7 | WINTER 2025 NEWSLETTER

SUPPORT OUR ADVERTISERS!

ST. JOHN SCHOOL
LITTLE CHUTE

UP TO
\$250 OFF TUITION
FOR NEW K-8 STUDENTS

REGISTER TODAY!

STJN.ORG/SCHOOL




130 E. Main Street
Little Chute
(920) 788-1100

Elite Trivia every Sunday!

Check out our facebook page for daily specials and upcoming events

 @ladderhouseonmain

ADT-Monitored Home Security

Get 24-Hour Protection
From a Name You Can Trust

- Burglary
- Flood Detection
- Fire Safety
- Carbon Monoxide





 Authorized Provider **SafeStreets** **833-287-3502**

**Celebrating over 30 years,
being part of your community!**
Thank You!

MEMORIES ANTIQUE MALL
APPLETON • LITTLE CHUTE • OPEN DAILY

THE AUCTION HOUSE
Memories

400 Randolph Drive
Appleton, WI 54913
920-788-5553

Open Daily
10 - 6

See Social Media or Call
for Holiday Hours




COMMUNITY FIRST ~ CHAMPION CENTER

Community First Champion Center is an elite ice and hard court sports complex in Grand Chute, WI. Our facility is built with the athlete in mind, where the thrill of victory is our inspiration. We are a modern, yet inviting atmosphere where winners play. Whether we are hosting a large tournament or team practice, each event is carefully executed with optimal skill and excellence in mind. Our perfectly maintained ice sheets, hardwood courts, and event space are sure to leave a lasting impression.

The 164,000-square-foot facility features three competition pods: a year-round ice rink; a fieldhouse; and a seasonal arena that transitions between an ice rink and hardwood courts. In addition to basketball, volleyball, hockey, and figure skating, sports such as gymnastics, cheer, dance, wrestling, futsal, and more can be held in the competition spaces.

Spectators can enjoy all the action from a second story observation deck with elevated bleacher seating and accessible areas. Coaches and players have access to a lounge area for breaks.

The venue also includes 10 locker rooms; 3 team meeting rooms; onsite physical therapy clinic; a first aid/trainer's room; a break room, concessions, two-sided mezzanine with seating as well as additional standing room.

education. In 2025, the Community First Champion Center awarded a \$1,000 scholarship to three very deserving Individuals! In 2026, our goal is to award three individuals each with a \$1,000 scholarship once again!

SCHOLARSHIP ELIGIBILITY

Resident of one of the communities in the Fox Cities Tourism Zone:

- Grand Chute
- Kaukauna
- Appleton, Menasha
- Neenah, Kimberly
- Town of Neenah
- Little Chute
- Fox Crossing
- Sherwood)

Please verify (check property tax statement or water utility bill) that you live in one of these municipalities. The municipality in which you live in may not be the same as your postal mailing address.

Participated in an event at the Community First Champion Center (As an athlete, coach, or staff member)

The Legacy Scholarship Committee will consider the following categories with equal weight to each:

- GPA
- Financial Need
- Community Involvement / Service
- Leadership

Graduating seniors (Class of 2026) are eligible to apply below!

Applications are due March 31, 2026

[Champion Center Fox Cities Legacy Scholarship Application Link](#)

Legacy Scholarship

ABOUT THE LEGACY SCHOLARSHIP

Are you a graduating senior in the Fox Cities area with a connection to the Champion Center? Check out the details below to see if you're eligible for the Legacy Scholarship!

The Legacy Scholarship Fund consists of traditional educational scholarships awarded to graduating seniors attending an institution of post-secondary



FIRE DEPARTMENT

Winter Safety Reminder: Keep Fire Hydrants Clear

As winter settles into the Village of Little Chute, we are asking residents to help keep our community safe by clearing snow and ice away from your neighborhoods fire hydrants. In an emergency, every second matters. Ensuring that hydrants are visible and accessible allows firefighters to act quickly when help is needed most.

Please maintain **at least 4 feet of clearance in all directions around your hydrant.** This includes clearing a path from the street to the hydrant so firefighters can reach it without delay. Your efforts play an important role in protecting your neighborhood and supporting the safety of the entire community.



For more information about the Little Chute Fire Department please visit:

<https://www.littlechutewi.org/82/Fire-Department>



9 | WINTER 2025 NEWSLETTER

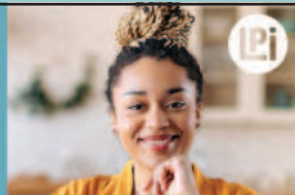
SUPPORT OUR ADVERTISERS!

WE'RE HIRING!

AD SALES EXECUTIVES

BE YOURSELF.
BRING YOUR PASSION.
WORK WITH PURPOSE.

- Paid training • Some travel
- Work-life balance
- Full-Time with benefits
- Serve your community



Contact us at
careers@4lpi.com or
www.4lpi.com/careers

LET'S GROW YOUR BUSINESS

Advertise in our Newsletter!

CONTACT ME
Alex Nicholas

anicholas@lpicommunities.com

(800) 950-9952 x2538

WE APPRECIATE OUR ADVERTISERS!

They allow us to print
this bulletin. Thank you!



2026 REFUSE & RECYCLING CALENDAR

Remainder of calendar will be published in Spring DPW Newsletter

JANUARY							FEBRUARY							MARCH						
Su	M	Tu	W	Th	F	Sa	Su	M	Tu	W	Th	F	Sa	Su	M	Tu	W	Th	F	Sa
				VH	2	3														
4	5	6	7	8	9	10	1	2	3	4	5	6	7	1	2	3	4	5	6	7
11	12	13	14	15	16	17	8	9	10	11	12	13	14	8	9	10	11	12	13	14
18	19	20	21	22	23	24	15	16	17	18	19	20	21	15	16	17	18	19	20	21
25	26	27	28	29	30	31	22	23	24	25	26	27	28	22	23	24	25	26	27	28
														30	31					
APRIL							MAY							JUNE						
Su	M	Tu	W	Th	F	Sa	Su	M	Tu	W	Th	F	Sa	Su	M	Tu	W	Th	F	Sa
			1	2	VH	4						1	2		1	2	3	4	5	6
5	6	7	8	9	10	11	3	4	5	6	7	8	9	7	8	9	10	11	12	13
12	13	14	15	16	17	18	10	11	12	13	14	15	16	14	15	16	17	18	19	20
19	20	21	22	23	24	25	17	18	19	20	21	22	23	21	22	23	24	25	26	27
26	27	28	29	30			24 31	VH	26	27	28	29	30	28	29	30				

GARBAGE & RECYCLING HOLIDAY COLLECTION:
New Year's – Thursday, January 1st garbage will be collected on Friday, January 2nd. **VH= Village Holiday**
Good Friday – Friday, April 3rd garbage will be collected on Thursday, April 2nd.
Memorial Day – Monday, May 25th garbage will be collected on Tuesday, May 26th. **
*Recycling collection for the holiday will be “pushed” to the next day for the rest of that week, Monday on Tuesday, etc.

SNOW AND ICE REMINDERS

PARKING RESTRICTIONS

As a reminder winter parking regulations begin December 1st-April 1st. During this time vehicles are not permitted to park on the street between the hours of 2:00 am to 6:00 am. Other times of the day when street parking is not regulated, please avoid parking next to snow piles to make it easier for the plows to remove the snow.

DEPOSITING SNOW ON PUBLIC STREETS

Sec. 40-65. Snow and ice removal. (c) Snow and ice not to encroach. No person shall push, shove or in any way deposit any snow or ice from any private driveway, private sidewalk, or private property onto any public street or alley, public or private sidewalk, or public lands dedicated to public use either before or after the public streets have been plowed.



PRIVATE SNOW REMOVAL

According to Sec. 40-65 Snow and Ice Removal of the Village of Little Chute Code of Ordinances: “The owner, occupant or person in charge of any parcel or lot which fronts upon or

abuts any sidewalk shall keep said sidewalk clear of all snow and ice. In the event of snow accumulating on said sidewalk due to natural means and/or by other means, said sidewalk shall be cleared of all accumulated snow and/or ice within 24 hours from the time the snow ceases to accumulate on said sidewalk.”

Sidewalks are to be kept clear of snow and ice to a minimum of five feet in width. In the event that ice has formed on any sidewalk in such a manner that it cannot be removed, the owner, occupant or person in charge of the parcel or lot which fronts upon or adjoins said sidewalk shall keep the sidewalk sprinkled with sand and/or salt to permit safe travel. NO written or verbal notice will be given to violators - it is the responsibility of a property owner of such parcel or lot which fronts upon or abuts any sidewalk to maintain the sidewalk area throughout the snow season. Any snow or ice not cleared within 24 hours from the time the snow ceases to accumulate, shall be cleared by the Village and billed to the owner, lessee, or occupant.

If you have a concern about a sidewalk call the Department of Public Works, (920) 423-3865.



206 E. MAIN STREET
LITTLE CHUTE, WI 54140
920.788.4141

GENERATIONS OF FAMILIES HAVE TRUSTED
BLC WITH THEIR BANKING SINCE 1906

Savings • Checking • CDs • Money Market
Mobile Deposit • Digital Wallet • Zelle®
Consumer & Business Loans NMLS #402793



3.00% APY*
ON BALANCES UP TO \$20,000
InterestPlus Checking

FOR ALL QUALIFICATIONS, BENEFITS &
TERMS VISIT blccb.com/InterestPlus

* 0.10% Annual Percentage Yield (APY) on balances over \$20,000. 0.02% APY applies to all balances if qualifications are not met during the statement period. Fees may reduce earnings. Rate may change after the account is opened. \$25 minimum deposit required to open an InterestPlus Checking account. Annual Percentage Yield is accurate as of 10/1/2023. Limit of one InterestPlus Checking account per customer.



Craig Locy, Owner
Hortonville, WI
920-428-2133

CRL CONSTRUCTION LLC

We take pride in offering a Quality House at a Fair Price!

www.Crlconstructionhomes.com
CRLCONSTRUCTIONHOMES@GMAIL.COM

-- 20 Years of Building Experience --

**Place Your Ad Here and
Support our Community!**

Instantly create and
purchase an ad with

AD CREATOR STUDIO



lpicommunities.com/adcreator

**DOES YOUR NONPROFIT
ORGANIZATION NEED
A NEWSLETTER?**



Engaging,
ad-supported
print and digital
newsletters to reach
your community.



Visit lpicommunities.com



VAN LIESHOUT LAW OFFICE
PO Box 186 , 122 E. Main St.
Little Chute, WI 54140
Phone • (920) 788-0800

Herrling | Clark
LAW FIRM LTD.

When your future is at stake.®

(920) 739-7366

**THRIVE
LOCALLY**



For ad info. call 1-800-950-9952 • www.lpicommunities.com Village of Little Chute, Little Chute, WI

E 4C 01-2089

Little Chute

ESTABLISHED 1848

108 WEST MAIN STREET, LITTLE CHUTE, WI 54140

PRST STD
U.S. POSTAGE
PAID
PERMIT NO. 27
LITTLE CHUTE, WI
54140

Postal Customer

CONTACT US!

Administrative Offices	108 W. Main St. (1st Floor)	788-7380
Fox Valley Metro Police	200 W. McKinley Ave.	788-7505
Parks, Rec & Forestry	108 W. Main St. (2nd Floor)	423-3869
Public Works	108 W. Main St. (2nd Floor)	423-3865
Gerard H. Van Hoof Library	625 Grand Ave.	788-7825
Water Plant	625 Evergreen	788-7522
Water Emergency		788-7526
Water Bill Payments	108 W. Main St. (1st Floor)	423-3854
Fire Non-Emergency		788-7399



HOLIDAY HOURS

All Village Offices Closed

DECEMBER 24

DECEMBER 25

JANUARY 1



WWW.LITTLECHUTEWI.ORG

